



AFRICA
INTERNATIONAL
UNIVERSITY



AIU CATALOGUE (REVISED 2022)

Committed to His Mission , Connected to His World

www.aiu.ac.ke

CATALOGUE OF THE AFRICA INTERNATIONAL UNIVERSITY (AIU)

Information in this catalogue is subject to change from time to time. AIU reserves the right to withdraw a course or programme or to limit its enrolment, when for any reason, it becomes impractical to offer it as previously scheduled.

Supplements to this publication will be available as necessary. For latest updates and revision, go to www.africainternational.edu

While AIU publishes programme information and materials, and assigns advisors, the student is ultimately responsible to assure his/her academic programme fulfils all graduation requirements.

© Copyright AIU SENATE, 2022

Revised 2022

Mailing address: Box 24686 - 00502, NAIROBI, KENYA

Telephone: (+254 20) 2603664, 3882104, 3882105 & 3882038

Mobile: +254725841885

Fax: (+254 20) 3882906,

E-mail: DeputyVC.AcademicAffairs@AfricaInternational.edu

registrar@africainternational.edu

admissions@africainternational.edu

website: www.africainternational.edu

Contents

From the Vice-Chancellor.....	vi
Accreditation and Affiliation	vii
Statement of Faith.....	viii
Vision, Mission and Core Values	ix
Vision.....	ix
Mission.....	ix
Core Values.....	ix
Philosophy.....	ix
ACADEMIC STANDARDS AND POLICIES	1
1.0. ADMISSIONS	1
1.1. General Admission Requirements.....	1
1.1.1. Undergraduate programs.....	1
1.1.2. Postgraduate Programs.....	2
1.2. Conduct of Studies and Supervision	4
1.2.1. Special Students	4
1.3. Application for Admission.....	5
1.4. Academic Advisor.....	5
2.0. REGISTRATION.....	6
3.0. TRANSFER OF CREDITS FROM ANOTHER INSTITUTION	7
4.0. VALIDATION OF COURSES.....	8
5.0. CHANGE OF PROGRAMME	8
6.0. CLASS LOAD	9
7.0. ABSENCES	10
8.0. WITHDRAWAL FROM AIU	10
9.0. SCHOOLS AND INSTITUTE OF THE UNIVERSITY.....	11
10.0. PROGRAMMES OFFERED BY AIU.....	12
11.0. OPEN, DISTANCE AND E- LEARNING (ODEL).....	14
11.1. Introduction.....	14
11.2. Programmes offered on the ODEL platform:	15
11.3. Administration of examination:	15
11.4. A mix of both ODEL and regular.	16
12.0. ORGANIZATION OF ACADEMIC PROGRAMMES	16
13.0. MAXIMUM DURATION.....	16

14.0.	EVALUATION OF TEACHING.....	17
15.0.	EXAMINATIONS AND STUDENT ASSESSMENT	17
15.1.	Continuous Assessment	17
15.2.	End-Term Examination.....	17
15.3.	Practical/Internship	18
15.4.	Grading System.....	18
16.0.	EXAMINATION REGULATIONS:.....	19
17.0.	CONDUCT OF EXAMINATIONS	20
17.1.	Special & Supplementary Examination:.....	22
18.0.	USE OF CALCULATORS, BIBLES AND DICTIONARIES:.....	23
19.0.	INCOMPLETE GRADES	23
20.0.	RETAKE EXAMINATIONS AND REPEAT COURSES	25
21.0.	APPEAL PROCESS FOR DISPUTED RESULTS	25
22.0.	PROGRESS	26
22.1.	Normal Progress.....	26
22.2.	Probation Cases.....	26
22.3.	Problem Cases.....	27
23.0.	PROMOTION	27
24.0.	DISCONTINUATION	27
25.0.	RETAKES	27
26.0.	REPETITION	28
27.0.	POLICY ON DISSERTATION/THESIS.....	28
28.0.	ACADEMIC OFFENCES	30
28.1.	General academic offences	30
28.2.	Disciplinary Action Arising from Academic Dishonesty.....	30
29.0.	SETTING, MODERATION OF EXAMINATION PAPERS AND THE ROLE OF INTERNAL AND EXTERNAL EXAMINERS	31
30.0.	GRADUATION REQUIREMENTS.....	33
30.1.	General graduation requirement	33
30.2.	Credit Hour Requirements	33
31.0.	CLASSIFICATION OF DEGREES.....	34
31.1.	Undergraduate Degrees.....	34
31.2.	Post Graduate Degrees	34
33.0	COURSE NUMBERING SYSTEM.....	35
33.1	Letter Codes:.....	35

33.2	Digit Codes:	37
33.3	Course Numbering Sequence.....	37
34.0	GENERAL COURSE REQUIREMENTS FOR ALL PROGRAMMES.....	38
34.1	NAIROBI EVANGELICAL GRADUATE SCHOOL OF THEOLOGY (NEGST) ...	38
34.2	SCHOOL OF BUSINESS AND ECONOMICS (SBE)	69
34.3	SCHOOL OF EDUCATION, ARTS AND SOCIAL SCIENCES (SEAS)	101
34.4	INSTITUTE FOR THE STUDY OF AFRICAN REALITIES (ISAR).....	141
APPENDICES		142
1.1	University Administration.....	142
1.1.1	Board of Trustees	142
1.2	GOVERNING COUNCIL	142
1.3	Chancellor	142
1.4	Senate Members	143
1.5	Management Board	143
1.6	LIST OF ACADEMIC STAFF AND THEIR EDUCATIONAL BACKGROUND...	144
1.7	ACADEMIC ADMINISTRATIVE STAFF	163

From the Vice-Chancellor

Africa International University is a chartered Christian university. It was started as Nairobi Evangelical Graduate School of Theology (NEGST) in 1983 by the Association of Evangelicals in Africa (AEA).

The goal was to provide training for pastors beyond the basic certificate and diploma levels. This was informed by the envisioned crisis of 'Christo-paganism' in African Christianity without African Biblical theologians with advanced training to provide leadership in combating this trend.

The objective was not simply for the enrichment of the scholar, but the ordinary believer in the church who was often poorly taught and vulnerable to a confused understanding of Christian truth. The establishment of Nairobi Evangelical Graduate School of Theology was seen as a viable instrument to that end.

AIU was awarded a university charter by the government of Kenya in March 2011. It has since continued to develop undergraduate programs, particularly in business, IT, Development studies and counselling psychology.

At Africa International University, we seek to be a learning community that practices loving God and neighbours with heart and mind. Our education perspective embraces disciplined, rigorous critical thinking and allows for the nurturing of relationships, creativity, and innovation. We are committed to offer education with a passion for God, God's word and God's world, passion for truth, integrity, service, and passion for excellence, justice, beauty, life, and creation.

Education with passion seeks to have students explore their God-given abilities and inspire their personal growth and development.

Critical to this pursuit is a core university teaching staff that strives to integrate the evangelical faith with their disciplines.

Dr. Nelson Makanda
Vice-Chancellor

Accreditation and Affiliation

AIU is a chartered private university authorised to offer degrees by the Kenya Commission for University Education (CUE). The university Charter was granted on 4th March 2011.

AIU is sponsored by the Association of Evangelicals in Africa (AEA), operating under the AEA Executive Board.

Accrediting Council for Theological Education in Africa (ACTEA): the following AIU Theological programmes were fully accredited by the Accrediting Council for Theological Education in Africa (ACTEA) upto July 25, 2019. Master of Arts (MA) in Biblical Studies, Christian Education, Church History, Missions and Translation Studies, Master of Divinity (M.Div.), Master of Theology (M.Th.) in Biblical Studies and Missions, and Master of Philosophy (M.Phil.) in Christian Education

International Council for Higher Education (ICHE): AIU (formerly NEGST) is a founding member of the International Council for Higher Education (ICHE) Zurich, Switzerland, an international body that validates degree programmes around the world. NEGST's M.Th./M.Phil., M.Div., and M.A. degrees are fully validated by the ICHE.

Council for Christian Colleges and Universities (CCCU); AIU is an international affiliate member.

Statement of Faith

Africa International University is founded on the Bible and its revelation of Jesus Christ. Our constitution includes the statement of faith of the Association of Evangelicals in Africa, which all students and teaching staff must subscribe to, and which reads as follows:

The Holy Scriptures of the Old and the New Testament (a total of 66 Books) are the Word of God. It is divinely inspired, infallible, inerrant, entirely trustworthy and serves as a supreme authority in all matters of faith and conduct (2 Tim. 3:16-17).

God is One. The one God is eternally self-existent in three Persons: Father, Son and Holy Spirit (Deut. 6:4-5; Mt. 28:19)

Jesus Christ is Saviour and Lord. As God, He was manifest in the flesh. We believe in His virgin birth; His sinless life; His divine miracles; His vicarious and atoning death, His bodily resurrection; His ascension; His mediatorial work; and His future personal return in Power and Glory (Lk. 1:32-33; Jn. 1:1-4; 1 Tim. 2:5-6; 6:13-16).

Holy Spirit is God. As the third Person in the Godhead, He indwells every believer upon conversion and enables the believer to live a holy life; to witness in power; and to work for the Lord Jesus Christ (Act. 5:3-4; Mt. 28:19; Acts. 1:8).

Man was made in the image of God and sinless. By choice Man fell out of favour into sin. In God's mercy, salvation comes to every lost and sinful person freely and simply by faith in Jesus Christ who shed His blood for sin, and through regeneration by the Holy Spirit (Gen. 1:26-28; 3:1-21; Jn.1:11-13, 1Cor. 12:13).

All believers in Jesus Christ are one body, the Church, of which He is the Head (1 Cor. 12:13; Eph. 2:14-22).

Satan is a fallen angel whose intent is to supplant God and frustrate His purpose, and whose ultimate end is consignment to eternal punishment (Lk. 10:17-18; Rev. 20:10).

Bodily Resurrection of all the dead will take place someday. Believers in Christ will rise unto everlasting blessedness while unbelievers will rise unto judgement and everlasting punishment (Rev. 20:11-15; 2 Cor. 5: 9-10).

Vision, Mission and Core Values

Vision

Christ-centred leaders in Africa educated to transform God's people and world.

Mission

To educate Christ-centred leaders for the transformation of God's people and world through innovative programmes, research, and community engagement.

Core Values

1. Excellence with Relevance—a solutions approach to learning.
2. Faith with Integrity—a discipleship and missional approach to theology and spirituality.
3. Leadership with Servanthood and Stewardship—leadership that combines deep and personal humility and humanity with an unwavering commitment to do the will of God at all costs.
4. Innovation with Community—not ministry or marketplace “soloists” but team-oriented leaders who seek creative and biblical solutions for the common good in their respective areas of calling.

Philosophy

Motivated by our vision, mission, core values, and by the conviction that learning is both rooted in and responsive to the culture and context, we seek to participate in God's mission in the world by bringing a Christ-centred world view to bear on knowledge, research and its relevance to both the mission of God and the needs of Africa. Students will take common core of integrative courses that include: Foundations of Christian Life and Mission, Hermeneutics, Christian Ethics, Leadership Development, and Research Methods. Such a core is vital for engaging all branches of knowledge in a way that is biblical and missional. Critical to this pursuit then is a core of university teaching staff that strives to integrate the evangelical faith with their disciplines. Each constituent entity is to develop its own curriculum philosophy, which would be related to the University philosophy and relevant to the entity's distinctive purpose. Existing entities will retain their curriculum philosophy

ACADEMIC STANDARDS AND POLICIES

1.0.ADMISSIONS

1.1. General Admission Requirements

Africa International University adheres to a non-discrimination policy in admissions. This is an expression of a foundational value rooted in our university's Christian teaching. All persons are invited to apply and will be given equal opportunity for admission regardless of race, gender, handicap, ethnic background, marital status, or national origin. Africa International University is a private Christian university and all programmes and functions of the university are explicitly Christian in worldview and values. The programmes in the School of Theology are designed with specific Church-based and Church-related vocational outcomes in view. Programmes in this School prepare leaders for service within the Christian tradition. Thus because of the specific mission of the School of Theology, individuals seeking admission to the degree programmes in this School must declare that they are adherents of the Christian faith. Other schools within the university do not require such a profession of Christian faith, but do require that an applicant acknowledges the Christian values and ethos of the university community and agree to abide by the Community Covenant printed in the Student Handbook.

All applications towards AIU programmes must be submitted in the prescribed form, which must be completed and signed by the applicant. All requirements must be submitted as summarized on the checklist section of the form. Where a Grade Point Average (GPA) is cited in this document, it is out of a 4.0 scale.

1.1.1. Undergraduate programs

1.1.1.1 Certificate Programmes

All applicants to the University Certificate programmes shall meet the following minimum academic requirements:

1. Kenya Certificate of Secondary Education (KCSE) Mean Grade D (minus) or its Accredited and Recognized equivalent
2. The Kenya Certificate of Education (KCE), East African Certificate of Education (EACE), "Ordinary Level" Division III

1.1.1.2 Diploma Programmes

All applicants to the University diploma programmes shall meet the following minimum academic requirements:

1. Kenya Certificate of Secondary Education (KCSE) Mean Grade C (minus) or its Accredited and Recognized equivalent OR
2. KCSE Mean Grade D (minus) or its Accredited and Recognized equivalent with Recognized relevant Post-Secondary Certificate, OR
3. The Kenya Certificate of Education (KCE), East African Certificate of Education (EACE), "Ordinary Level" Division I or II or an Accredited and Recognized equivalent, OR
4. The Kenya Certificate of Education (KCE), East African Certificate of Education (EACE), "Ordinary Level" Division III or an Accredited and Recognized equivalent, plus an Accredited and Recognized Post-Secondary Certificate, OR
5. The Kenya Advanced Certificate of Education (KACE) "Advanced Level" with at least one Principal pass and a subsidiary.

1.1.1.3 Bachelor's Degree Programmes

Admission into a bachelor's degree program at Africa International University will be based on the following minimum requirements:

- a. The minimum requirement of Grade C+ must be attained at the Kenya Certificate of Secondary Examination (KCSE) or its equivalent and additional requirements specified for each academic program,
- b. Applicants with relevant diploma from an institution recognized by the University Senate.

1.1.2. Postgraduate Programs

Admission and conduct of postgraduate programs shall be conducted under the provisions of the general postgraduate regulations.

1.1.2.1.Postgraduate Diploma

The following shall be eligible for admission into a postgraduate diploma program in the University:

- Holders of a Bachelor's degree from Africa International University and other universities recognized by the AIU Senate with a Pass level of classification or a minimum GPA of 2.5 or its equivalent.

The postgraduate diploma programs in all schools shall extend over a period of at least 12 months from the date of registration and a maximum of 24 months.

1.1.2.2.Masters Programs

The following shall be eligible for admission into a Masters degree program in the University:

- Holders of a Bachelor's degree (Second Class Honours [Upper Division] or higher) from Africa International University or other universities recognized by the AIU Senate,
- Holders of a Bachelor's degree (Second Class Honours [Lower Division]) from Africa International University or other recognized universities who have at least two years of relevant post-graduation experience,
- Holders of a postgraduate diploma from AIU or other institutions recognized by the AIU Senate, with a minimum GPA of 2.5 or its equivalent
- In exceptional cases, Senate, on the recommendation of any of the schools, may admit to the Masters program, applicants who do not hold a first degree, provided that such candidates, based on the research and academic work they have done, can demonstrate that they are well qualified to undertake postgraduate work. This is so long as it is in line with the relevant regulatory bodies.

1.1.2.3. Doctoral Programs

To be admitted to an AIU doctoral program, an applicant must hold a Masters degree from AIU or an institution recognized by the AIU Senate. Beyond the possession of a Masters degree, the applicant must have a cumulative mean of at least a B, or a minimum GPA of 3.0 in his/her Masters studies, and must demonstrate ability in academic research. Specific program minimum requirements will apply.

- In exceptional cases, Senate, on the recommendation of any of the schools, may admit to the doctorate program, applicants who do not hold a Master's degree, provided that such candidates, on the basis of the research, professional and academic work they have done, can demonstrate that they are well qualified to undertake doctoral work. This is so long as it is in line with the relevant regulatory bodies.

1.2. Conduct of Studies and Supervision

A candidate registered in accordance with these regulations shall be required to pursue his or her program of study under the supervision of academic staff appointed in that capacity by Senate on the recommendation of the School's Academic Board concerned and the Board of Postgraduate Studies.

- a) All must assent to the AIU Statement of Faith.
- b) Sign AIU's Code of Conduct
- c) Pay a non-refundable application fee.
- d) Submit a recent full-face passport-size photograph
- e) All applicants to programmes offered under the school of Theology (NEGST), shall in addition to meeting the minimum academic qualifications also show a clear evidence of a personal and vibrant faith in Jesus Christ as Saviour and Lord.
- f) Any other requirement in the prescribed application form

1.2.1. Special Students

Special students are persons not enrolled in a formal regular programme. These must complete the normal process of application and are issued with a letter of admission as

“Special Student”.

- i. A special student who desires credit for courses taken but not applied towards a programme of study shall meet relevant AIU admission requirements.
- ii. A special student who does not meet AIU entry requirements shall not be granted academic credits for work done.
- iii. A student who may qualify or not qualify for admission into a particular programme, who desires to attend certain classes to learn without earning credit may be admitted as an “Auditor”.

1.3. Application for Admission

- i. The applicant shall complete the application form and submit full documentation for all academic qualifications, such as copies of previous certificates and official transcripts from the earlier colleges or universities attended. The respective college or university, submitted in an unopened envelope sealed by the issuing college or university must have issued the official transcript. Certified copies of transcripts may be accepted in lieu of the official transcript. Transcripts and certificates written in a language other than English must be submitted with a certified translation into English
- ii. Recognition and Equation (REQ) certificate for holders of foreign qualifications
- iii. Qualified applicants shall receive a letter of acceptance from AIU Admissions Office before enrolment at the university.
- iv. All new students shall go through the process of verification of their original certificates, diplomas and degrees obtained prior to coming to the university.

1.4. Academic Advisor

All students are advised on the courses they should take by an Advisor assigned to them by the Head of Department. The Advisor-advisee relationship is very important to the curriculum of AIU. The Advisor assists the students in planning and executing the students’ course of study in conformity with the requirements of each programme. Each student is responsible for completing the requirements of the programme.

2.0. REGISTRATION

Students are expected to register at the time specified in the academic calendar. Failure to do so will necessitate a late registration charge. At the beginning of the academic year, registration of new students takes place during the week of orientation.

All students must register for courses online using the student's portal and must have a full load as specified in the templates provided by the School.

Unregistered students will not have access to university services.

The following applies to registration:

- a. The name in which a student will be registered will be that which appears on the student's high school certificate or equivalent document offered as an entry qualification. Where this differs from the student's National ID or Passport, the ID or Passport will be taken and valid explanation provided such as affidavit or marriage certificate.
- b. Registration of continuing students is provided for in the academic calendar. Those who do not register on the set date may register during the first two weeks of the new semester.
- c. The student's registration for each Semester of study is to be planned in consultation with the assigned Advisor. Students are held responsible for seeing that they meet all requirements for graduation. Students not strictly following the curriculum roadmap, thus taking courses out of sequence, forfeit their right to require the school to offer courses when they need them and may not be eligible for graduation at the expected time.
- d. Fees must be paid by the first two weeks of the Semester unless Fee Payment Plan has been submitted to the Office of the Director of Finance.
- e. After the Semester has been in session for two weeks, the Academic Advisor's permission is needed for late registration.
- f. AIU reserves the right to cancel courses that do not meet minimum enrolments. Course cancellations generally are announced on or before the first day of class, and efforts are made to notify students before the class starts. In this event, full refunds of fees will be granted for cancelled classes, or applied to other courses.

- g. Change of Registration: All changes made after registration weeks must be entered on a Class Adjustment Form available from the Registrar's Office and AIU website. A student may drop a class at any time during the first two weeks of the semester (or the equivalent for modular students). Refund of chargeable fees is as prescribed on the Financial Policies.

All students who have not met their financial obligations by the end of 2nd week of the Semester are automatically deregistered from the Semester.

3.0. TRANSFER OF CREDITS FROM ANOTHER INSTITUTION

- i. An applicant from a recognized institution of higher learning wishing to transfer credits from an uncompleted programme may request advanced placement when he or she applies for admission. The applicant shall complete the Transfer of Credit Form and submit it to the Head of Department, justifying his/her request and attaching evidence of the credentials such as official transcript and course syllabi, which would support such a request. The Head of Department in consultation with the Dean of School shall consider the request. A complete assessment of the applicant's programme requirements and prescription of a curriculum roadmap should be done prior to enrollment at AIU or within the first semester.
- ii. Equivalent course credits with a minimum grade of B, earned at other recognized institutions shall be accepted at full value to the extent that the courses are comparable to AIU requirements. The courses must also be taken within the time limit of seven years prior to admission at AIU.
- iii. The transferred credits shall not be more than 49% of the credit hours in the AIU programme of study.
- iv. Although transfer credits are included in the total credits acquired, they shall not be computed into the student's cumulative average score.
- v. No credit shall be given from undergraduate courses towards postgraduate level courses.
- vi. Applicants who have earned a Diploma recognized by AIU Senate, may earn credits towards AIU Bachelor's degrees to a maximum of 38%.
- vii. The student shall be charged transfer of credit fees for initiating the credit transfer process.

4.0.VALIDATION OF COURSES

- i. A student wishing to be exempted from any course shall complete the Course Validation Request Form and submit it to the Head of Department, justifying his/her request and attaching evidence of the credentials such as course syllabi, and official transcript which would support such a request. The Head of Department in consultation with the Dean shall consider the request.
- ii. The validation shall occur after the Head of Department and the Dean of School have approved the request.
- iii. At the discretion of the Head of Department, the student may be required to take the validation examination set by the department and administered by the Office of the Academic Registrar. In any such examination, the pass mark shall be a grade of “B” or better.
- iv. Non-letter graded courses, transfer courses, and work that received grades below “B” cannot be validated.
- v. Validation of a course does not reduce the student’s total credits requirement but allows the student to substitute hours in the same department. The actual validated course shall be replaced on AIU transcript by an equivalent level course.
- vi. The student shall be charged a course validation fee for initiating the validation process.

5.0. CHANGE OF PROGRAMME

Students may change programmes within the first two weeks of reporting, by submitting the Change of Programme Form to the Academic Registrar, who will process it through the new department of choice. If approved, the Academic Registrar shall notify the student and both departments concerned in writing.

Change of programme is only permissible if the student meets the entry requirements for the course they are changing to. Change of programme after the student’s first semester of reporting shall attract a change of programme fee.

6.0. CLASS LOAD

AIU academic year runs on a trimester cycle consisting of three academic Semesters. Two Semesters run for 15 weeks and the third runs for 13 weeks but with the same credit hours as a 15-week semester. The first thirteen weeks of a 15-week semester or eleven of a 13-week semester are dedicated to normal classes, and the last 2 weeks are for examination. Each student is required to be on campus (actively registered) for two continuous Semesters per year, the third semester is usually assigned courses that will enable a student to accelerate their studies.

- i. AIU measures the amount of academic work scheduled by a student in terms of credit hours. One credit hour is worth 60 minutes of contact/lecture time per week. For example, a 3 credit-hour course meets for 180 minutes every week for 13 weeks of classes.
- ii. Workload is determined by the number of credit hours for each course, which normally equals the total number of hours of lecture or class periods per week. Thus, a class that meets 3 class hours per week in a 15-week semester is normally a 3 credit-hour course. A normal full-time class load is 15 credit hours per semester for Master's students, 18 to 21 credit hours for undergraduate and 6 to 12 credit hours for Doctoral programmes. For every class hour (60 minutes of class work) a student is expected to give a minimum equivalent of two class hours of preparation outside of class. Students are not permitted to take more than the hours allowed by their programme in a Semester unless they have all three of the following: (1) cumulative average score of B minimum, (2) permission of the academic advisor and (3) permission of the Head of Department.
- iii. Expectations from students
 - Students at Africa International University should be prepared to work or to study during any of the five weekdays.
 - Students may be assigned class sessions according to the University timetable at any time or on any day other than Sunday. Saturday classes may be organized in

consultation with the students and the lecturers. Students are expected to attend all such class sessions.

7.0. ABSENCES

Students are expected to attend all classes in each course in which they are enrolled. Students are responsible for all academic work missed during absences. A student may not miss more than 20% of class attendance in each course.

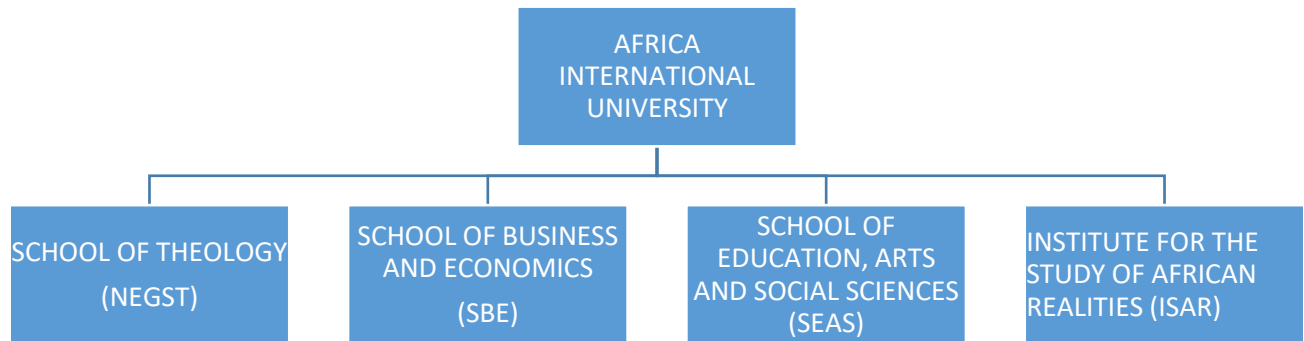
8.0. WITHDRAWAL FROM AIU

- i. **Withdrawal on Temporary Basis:** For reasons deemed justifiable by the Dean of School (e.g. health, finance, etc.), a student may formally seek permission in writing to the Dean of School to withdraw from the University. Such an application should contain the reason(s) for temporary withdrawal and plans for returning to complete the programme by such a period as not to exceed the maximum duration of time allowed to complete the programme. A written request to the Dean of School for reinstatement is required to effect reinstatement. Copies must be sent to the Head of Department and the Academic Registrar. In the absence of an approved temporary withdrawal request, continuation fee applies for AIU students.
- ii. **Withdrawal on Terminal Basis:** A student may withdraw permanently or be so asked when it becomes apparent that continuation is practically, morally, or academically untenable. A student so discharged may not resume studies at a later date except by applying afresh. A person who has been discharged on terminal basis is not likely to be re-admitted based on a fresh application, unless there is clear evidence of change in the circumstance that warranted the terminal discharge.
- iii. **Withdrawal on Transfer Basis:** A student may transfer credits from AIU to another institution provided: the student has not been awarded a terminal credential already based on these same credits; the student submits in writing a request to the Dean of School and copied to the Academic Registrar to withdraw from AIU and to transfer credits to another institution; the student has met all obligations to AIU,

including the cost of sending transcripts to another institution. Acceptance of such credits is at the discretion of the other institution.

9.0. SCHOOLS AND INSTITUTE OF THE UNIVERSITY

The University is currently made up of three schools and an Institute as shown below.



10.0. PROGRAMMES OFFERED BY AIU

The University offers programmes at the Doctoral, Master's and Undergraduate levels. The list of programmes offered, duration of each programme, and total lecture hours required for graduation are shown in the following table:

	Programmes	Duration	Total Lecture (Credit) Hours
1	Doctor of Philosophy in Theological Studies with tracks in: <ul style="list-style-type: none"> • Theological studies • Mission studies • Biblical Studies • World Christianity • Practical Theology 	4 Years	Integrative seminar and research (42 credit hrs)
2	Doctor of Philosophy in Translation Studies	4 Years	Integrative seminar and research (42 credit hours)
3	Doctor of Philosophy in Interreligious Studies	4 Years	Integrative seminar and research (42 credit hours)
4.	Doctor of Philosophy in Leadership and Governance	4 years	Integrative seminar and research (72 Credit hours)
5.	Doctor of Philosophy in Business Administration and Management	4 years	Integrative seminar and research (72 credit hours)
6.	Doctor of Philosophy in Clinical Psychology	4 years	Integrative seminar and research (90 credit Hours)
7.	Doctor of Philosophy in Education with specializations in: <ul style="list-style-type: none"> • Curriculum and Instruction • Church Education • Educational Leadership and Administration • Child Development and Family studies 	3 Years	Integrative seminar and research (42 credit hours)
8.	Doctor of Ministry	3 Years	Integrative seminar and research (48 credit hours)
9.	Master of Divinity in <ul style="list-style-type: none"> • Biblical studies • Pastoral studies • General studies 	3 Years	84 credit hours

	Programmes	Duration	Total Lecture (Credit) Hours
	<ul style="list-style-type: none"> • Mission Studies • Theology • Church Education 		
10.	Master of Arts in Organizational Leadership	3 Years	54 credit hours
11.	Master of Public Policy and Administration	2 years	54 credit hours
12.	Master of Arts in Pastoral Studies	2 Years	54 credit hours
13.	Master of Arts in Church History	2 Years	54 credit hours
14.	Master of Arts in Translation Studies	2 Years	54 credit hours
15.	Master of Arts in Biblical Studies	2 Years	54 credit hours
16.	Master of Arts in Mission Studies	2 Years	54 credit hours
17.	Master of Business Administration	2 Years	54 credit hours
18.	Master of Arts in Counselling Psychology	2 Years	54 credit hours
19.	Master of Education with specializations in <ul style="list-style-type: none"> • Curriculum and Instruction • Church Education • Educational Leadership and Administration • Child Development and Family Studies 	2 years	54 credit hours
20.	Master of Development Studies	2 years	54 credit hours
21.	Postgraduate Diploma in Education	1 Year	30 credit hours
22.	Postgraduate Diploma in Theology	1 Year	30 credit hours
23.	Bachelor of Theology	4 Years	129 credit hours
24.	Bachelor of Business Administration	4 Years	147 credit hours
25.	Bachelor of Arts in Development Studies	4 Years	129 credit hours
26.	Bachelor Science in Information Technology	4 Years	159 credit hours
27.	Bachelor of Science in Entrepreneurship	4 Years	147 credit hours
28.	Bachelor of Science in Accounting and Financial Management	4 Years	162 credit hours
29.	Bachelor of Arts in Counselling Psychology	4 Years	132 credit hours
30.	Bachelor of Education (Arts): ECD option	4 Years	135 credit hours
31.	Bachelor of Education (Arts): Primary option	4 Years	135 credit hours
32.	Bachelor of Education (Arts): Secondary option	4 Years	135 credit hours
33.	Bachelor of Arts in Communication, Linguistics and Translation	4 Years	135 credit hours
34.	Diploma in Theology	2 Years	66 credit hours
35.	Diploma in Wholistic Ministry	2 Years	66 credit hours
36.	Diploma in Wholistic Community Development	2 Years	66 credit hours
37.	Diploma in Linguistics	2 Years	66 credit hours
38.	Diploma in Procurement Management	2 Years	66 credit hours
39.	Diploma in Health Systems Management	2 Years	66 credit hours
40.	Diploma in Investment Management	2 Years	66 credit hours
41.	Diploma in Entrepreneurship	2 Years	66 credit hours
42.	Diploma in Disaster Management	2 Years	66 credit hours
43.	Diploma in Sales and Marketing	2 Years	66 credit hours

	Programmes	Duration	Total Lecture (Credit) Hours
44.	Diploma in Education	2 Years	78 credit hours
45.	Diploma in Business Management	2 years	66 credit hours
46.	Diploma in Information Technology	2 Years	60 credit hours
47.	Diploma in Human Resource Management	2 years	66 credit hours
48.	Diploma in Community Development	2 Years	66 credit hours
49.	Diploma in Counselling Psychology	2 years	66 credit hours
50.	Diploma in School Chaplaincy	2 years	66 credit hours
51.	Diploma in Missions	2 years	66 credit hours
52.	Certificate in Theology	1 Years	36 credit hours
53.	Certificate in Missions	1 Years	33 credit hours
54.	Certificate in Healthy Church	1 Years	33 credit hours

11.0. OPEN, DISTANCE AND E- LEARNING (ODEL)

The Distance and E-learning directorate works through the academic departments to offer their courses in flexible modes of delivery.

11.1. Introduction

Open, distance and eLearning is one of the modes of study offered at Africa International University. It is a flexible mode of study that uses technology for course delivery. Courses are offered through blended learning – a blend of face to face and online learning. Attention is given to several interactions, student- student interactions, teacher – students and student – content interactions. The learner is given autonomy to be in charge of his/her learning process.

Advantages of taking ODEL courses.

When taking your courses online, the following are some of the advantages.

- i. Learners can learn at their own pace. Hence for accelerated learners, one graduates faster.
- ii. Blended learning approaches result in a higher knowledge retention rate. It also helps that coursework can be refreshed and updated whenever needed.
- iii. E-learning reduces time away from the workplace, eliminates the need for travel, and removes the need for classroom-based training.

- iv. If you are using a learning management system to deliver your e-learning, then tracking learner progress is a piece-of-cake, and reporting on this activity is just as simple.
- v. By leveraging e-learning for online testing and quizzing, the need for printing out paper-based assessments is reduced; in fact, it's practically eliminated altogether!
- vi. Using e-learning, you can give students the freedom to learn at their own convenience, and at a pace that is right for them. Students can be trained in remote locations and in a consistent fashion as anyone receiving on-site training.

11.2. Programmes offered on the ODEL platform:

ODEL Supports courses offered from the following programmes:

- Bachelor of Business Administration (BBA)
- Bachelor of Arts in Development studies (BADs)
- Bachelor of Arts in Counselling Psychology (BACP)
- Bachelor of Theology (BTH)
- Master of Arts in Organizational Leadership (MAOL)
- Master of Arts in Translation Studies (MATS)
- Post Graduate Diploma in Theology (PGD Theo)

Other than the mentioned programmes, ODEL also supports university core courses, General courses and other courses the Heads of departments deems necessary to offer online.

11.3. Administration of examination:

Administration of examinations for courses offered through ODEL is through continuous assessment Tests (CATS) and end of semester examinations. CATS constitute weekly quizzes, discussion forums, assignments and term papers.

End of semester exams follow the university examination calendar. The examination can be attended from AIU main Campus (Karen), and/or online examination platforms. For those outside

Kenya, exams can be administered by an accredited, approved certified Invigilator appointed by the university within the regions of the candidates.

11.4. A mix of both ODEL and regular.

Blended learning is at the core of the learning process. Some courses deemed to be delivered face to face from any programme will be taught through residential face to face classroom teaching. On the other hand, other courses within the programme will be delivered online. A lecturer teaching an online course can at the same time be teaching the same course to regular students.

12.0. ORGANIZATION OF ACADEMIC PROGRAMMES

Four categories of courses are offered in the university programmes

- i. *University Core Courses (UC)* required for all programmes at the appropriate levels. These courses cater for the general ethos and values of the University.
- ii. *Core courses* required by specific Schools at the appropriate levels. These courses ensure that the basic competencies required in the professions are acquired.
- iii. *Programme and Specialization courses* required for a student to graduate with focused competencies in a specific area of study and specialization.
- iv. *Courses from other departments* required as general electives that allow students to meet graduation requirements.

13.0. MAXIMUM DURATION

Whether as part-time or for any other reasons warranting a delay, students are allowed the maximum durations to complete degree programmes as follows:

- i. Doctor of Philosophy – 7 years
- ii. DMIN - 7 years
- iii. MA, MED, MBA, MPPA – 5 years
- iv. Master of Divinity – 7 years
- v. Bachelor's degrees- 8 years
- vi. Certificates and Diplomas – 4 years

Failure to complete a programme within the time allowed will result in automatic discharge. Credits earned from an expired programme may be transferable if within the stipulations of the credits transfer requirements.

Continuation fee is charged at the rate of 3CH for Undergraduate students, Ksh 50,000 per Semester for Masters Students and Ksh 90,000 per semester for PHD students for the time they are away but within the timelines of their programme duration.

14.0. EVALUATION OF TEACHING

To identify less-than-effective teaching, students are required to complete a faculty teaching assessment form each term in every course they are enrolled in. The responses of the students shall be tallied by the Office of the Quality Assurance director who shall communicate the assessment results to the instructor and the head of department through the Dean of the respective schools. Problems noted shall be addressed with the instructor through the head of department. Remedies shall include peer mentoring, adjustment of teaching assignment for the instructor or, in extreme cases, non- reappointment of the instructor.

15.0. EXAMINATIONS AND STUDENT ASSESSMENT

15.1. Continuous Assessment

Continuous Assessment shall be employed, involving a combination of assignments such as short tests, research papers, class presentations, and projects spread out throughout the semester. The cumulative weight of the continuous assessment shall be 30% and 60% for undergraduate and postgraduate courses, respectively. This may be adjusted as guided by specific programme accreditation provisions.

15.2. End-Term Examination

A final examination or a project in lieu of the final examination shall be given or required at the end of the term. The cumulative weight of the final examination or other forms of assessment in lieu of examination shall be 70% and 40% for undergraduate and postgraduate courses, respectively. This may be adjusted as guided by specific programme accreditation provisions.

15.3. Practical/Internship

The practicum is required to test the level of integration of classroom work and practice. Students are assigned to practical areas of interest in the church, in educational institutions, or in organizations offering relevant practical experience. Practicum is weighted on credit hour basis and is supervised by the appropriate department.

15.4. Grading System

- a) The University uses the standard British Grading Scale to compute the average grade earned by a student.
- b) The letter grades and their corresponding raw scores are as shown both for undergraduate and Post Graduate programmes.

Grading Scale for Undergraduate and Postgraduate Programmes

Percentage	Letter Grade	Level of Achievement (Undergraduate Programmes)	Level of Achievement (Postgraduate Programmes)
70 – 100	A	Excellent	Excellent
60 - 69	B	Good	Good
50 - 59	C	Fair	Fair
40-50	D (undergraduate) F (postgraduate)	Poor	Failure
0 – 39	F	Failure	Failure
	I	Incomplete	
	W	Withdrawal	

A - Is an exceptional grade. It is indicative of outstanding achievement and reveals an unusual mastery of the subject matter. It also shows remarkable intellectual curiosity, initiative, skill and thoroughness.

B - Indicates work and achievement that shows considerable initiative, skill and thoroughness in fulfilling the requirements of the course.

C - Is an average grade indicative of a fair meeting of requirements. The student's initiative, skill, and thoroughness is average, revealing normal scholarly ability.

D - Reveals accomplishment that is poor in quality and/or quantity and is generally unsatisfactory from the standpoint of course requirements. A student earning this grade has not been sufficiently motivated to do adequate work or is lacking in the ability to do so. This is the lowest grade for which credit can be given.

F - Is a failing grade. It indicates very unsatisfactory work.

All units must be completed at the end of each given Semester, failure to do so results in an F grade. A student who sits the final exam without CAT marks will automatically earn an F grade. A student who gets an F grade is allowed to repeat the unit or retake the examination the next time that unit is offered or take a supplementary exam when scheduled. The maximum passing grade one can earn after an F grade is 40% for undergraduate and 50% postgraduate courses.

16.0. EXAMINATION REGULATIONS:

The regulations for final examinations or projects in lieu thereof shall be as follows:

- i. A final examination or a project in lieu of the final examination shall be required for each course at the end of each Semester.
- ii. Each Head of Department shall be designated as the Chief Examinations Officer for his/her department.
- iii. No candidate will be admitted to any examination unless:
 - a. They are registered students of the university with a valid registration card and examination card.
 - b. They have satisfactorily attended the course and done the course work. Course work marks shall be submitted to the Registrar a week before the beginning of examinations.
 - c. They have been permitted on exceptional circumstances backed up by a letter from the Registrar or Finance office.

17.0. CONDUCT OF EXAMINATIONS

The following shall govern the expected conduct during all physical examinations. Regulations for online examinations are as guided in the respective instructions for such examinations.

- i. Invigilators are required to be present at all examinations and are responsible for their proper conduct. Students are required to comply with all instructions issued by the invigilators.
- ii. Students will be admitted to the examination room by the invigilator(s) after they have been checked up by assigned university security personnel at the entrance of the exam venue. The checkup shall be friendly and shall involve the display of the exam clearance card, ID, and other items in possession of the student. Mobile phones, smart devices and other items not required in the exam room shall be deposited with the security personnel with specific labels for each item.
- iii. Students should sit at a desk allocated for the paper they are sitting in accordance with the course labels pasted in front of the exam venue.
- iv. Students should only bring essential items to examinations as there is limited storage for personal items within examination rooms.
- v. Students must bring their own pens, pencils, rulers, and any other required equipment to each examination room. These should be kept in a clear plastic pencil case. Cases and other containers are not permitted on examination desks. Additional material may only be used if issued by an invigilator or where it is specifically allowed in the examination paper rubric.
- vi. Food and drinks are not permitted in the examination room except for water which, if required, should be in a clear plastic bottle with no label.
- vii. Students must bring their University ID card to all examinations and display it on their desk throughout the examination. Though the ID cards are checked at the entrance of the exam room, an invigilator may check them again after the examination has started.
- viii. Students should complete an exam attendance sign-up sheet per exam unit which will be collected by the invigilator after each student has signed.

- ix. Students should enter their student number, not their name, on the examination booklet. The student number is the one given upon admission into AIU and found on the student ID card.
- x. Examinations will start and finish on the instruction of the invigilator. Students must not open examination papers or start writing until instructed to do so and/or until a prayer has been made by one of the invigilators.
- xi. The use of mobile phones, smart devices or other electronic devices is not permitted. If a mobile phone, smart device or other electronic device is found with a student during the course of an examination, it will be regarded as a disciplinary offence.
- xii. Talking or communicating in any other way with other students in the examination room before, during or after an examination is forbidden. Failure to observe this requirement will be treated as a disciplinary offence.
- xiii. If a student wishes to speak to an invigilator he/she should raise a hand and stay seated.
- xiv. The University operates a zero-tolerance policy in relation to cheating in examinations. Invigilators will announce at the beginning of each examination that it is an offence for students to be in possession of any notes, documents, or unauthorized material or to have any information written on their body or clothing. The invigilators may ask anyone with such material to raise their hand. The material will then be collected, and the opportunity provided for information on the body or clothing to be removed. After this point, if any student is discovered with such material or with any information written on any part of their body or clothing in the examination room, it will automatically be assumed that cheating has taken place and the consequence will be a mark of zero to the exam.
- xv. Any student wishing to leave the examination room temporarily should raise their hand to request permission from an invigilator. Students permitted to leave the room may be escorted by an invigilator. Any student who leaves the room without an invigilator's permission will be deemed to have withdrawn from the examination and will not be allowed to return. The Chief Invigilator will provide a report to the Examinations Office in such cases.

- xvi. Any student who causes a disturbance in an examination room will be reprimanded by an invigilator. If the conduct persists the student may be required to withdraw from the examination room and a report will be made to the Exams Office.
- xvii. Students who arrive late may be admitted to an examination room during the first 30 minutes of an examination. No additional time will be given.
- xviii. Students are not permitted to leave an examination during the first 30 minutes or the last 20 minutes. In examination rooms where papers of mixed duration are being taken students are only permitted to leave at the invigilator's discretion.
- xix. Students wishing to leave an examination early must inform the invigilator and must remain in their seat until their script has been collected. They must leave the examination room quietly with minimum disturbance both inside and immediately outside the examination room.
- xx. At the end of an examination the invigilator will instruct students to stop writing. Students must remain seated at their desks until all scripts have been collected by an invigilator and they are instructed that they may leave.
- xxi. No answer booklet or part of an answer booklet, whether used or not, may be removed from the examination room.

17.1. Special & Supplementary Examination:

Alternative examination arrangements may be made for students with long- or short-term medical conditions, specific learning difficulties or disabilities, subject to the overall requirement that academic standards must be maintained.

- i. Requests for alternative examination arrangements on the grounds of specific learning difficulties shall be submitted to the Examinations Office through relevant departments with supporting evidence acceptable to senate e.g., support from a medical doctor.
- ii. There shall be no make-up examinations. Students who miss examinations on grounds of unsettled fees or on any other acceptable grounds shall wait until the relevant units are on offer for them to sit the missed examinations.

- iii. Supplementary examinations shall be provided for, once annually for students who score failing grades (F). Retakes shall be scheduled as per the academic calendar during the normal university examinations week. See below the university policy on F grades.

Special examinations require the same degree of security as any other examinations. The department concerned will prepare the special examination.

Students who miss the special examination for any reason shall wait for the next regular examination in that course.

18.0. USE OF CALCULATORS, BIBLES AND DICTIONARIES:

- i. Except where special arrangements apply, the use of programmable calculators is forbidden. Where the use of such calculators is permitted only specified models may be used and any unauthorized calculators will be confiscated. Any suspected misuse of calculators will be considered as a possible disciplinary offence.
- ii. Unmarked Bibles shall be provided by the Examinations Office if required in specific exams and/or if allowed by the examiner.
- iii. Where applicable, English Language dictionaries are available in examination rooms and may be consulted through the invigilator who, upon request, will bring the dictionary to the student's desk. No assistance with the use of the dictionary is permitted. Students are not permitted to bring their own dictionaries or electronic translators into the examination room.

19.0. INCOMPLETE GRADES

Students taking courses at AIU are expected to complete all course work by the deadline set by the course lecturer and to sit for the examination when scheduled. If, for valid reasons outlined below, a student cannot finish the requirement/s by the deadline, he or she may request an Incomplete grade. A student who sits for the final exam without CAT marks or an Incomplete grade request will automatically receive an F grade. Faculty members in

consultation with the Head of Department are permitted to give an Incomplete only when the following conditions are met:

- i. The student has done a substantial part of the coursework and shows evidence of success for the remaining work.
- ii. Valid reasons, not related to the performance in the class, such as serious indisposition or an emergency, have prevented the student from finishing the course requirements on time.
- iii. If the conditions specified above are not present, the lecturer is entitled to deny a request for an Incomplete and assign a letter grade based on the work completed to that point.
- iv. It is the student's responsibility to initiate a request for an incomplete by submitting the Incomplete Request Form to the course lecturer. This form must be submitted to the lecturer on or before the last day of classes. After the lecturer signs the form and agrees with the student on a revised deadline, the lecturer must submit the Request Form to the Dean of School for approval before the final grades due date.
- v. It is not appropriate to give an Incomplete to enable a student to do additional work to improve a grade.
- vi. Incomplete grade requests apply to coursework (CATs) only. On highly justifiable grounds, a postgraduate student may be allowed an incomplete grade based on the term paper in lieu of an exam. If a student misses sit-in exams he/she will have to wait until the unit is offered again to be able to sit for the exam. In exceptional and highly unusual circumstances a student may be allowed to sit for special exam on highly justifiable grounds. Request for such special exams must be submitted in writing through the Head of Department with the supporting documents.
- vii. An incomplete grade request must be completed before the beginning of classes of the next semester unless there are justifiable reasons to extend the deadline of grade completion beyond the current semester.

- viii. If the student does not remove the incomplete grade during the time specified (in iv. Above), the “Incomplete” grade will convert automatically to “F.”

In the case of finalists who qualify for an incomplete grade, the Dean of School will recommend a mode of assessment to the Senate. This may include;

- Oral or written special examination to be scheduled at the earliest opportunity
- Additional project or coursework, or
- An assessment of work already completed.

20.0. RETAKE EXAMINATIONS AND REPEAT COURSES

- i. Courses in which a student receives an F grade must be repeated or replaced by another course, in the latter case by the approval of the Head of Department. However, a core course cannot be replaced.
- ii. Whether the course is repeated or replaced, the F will be replaced by the new grade, and this grade can be no higher than a C (50%) for postgraduate students and a D (40%) for undergraduate students.
- iii. Instead of repeating a failed course, the student may retake the examination when next offered. With the permission of the Head of Department and the Dean of School a student may submit the course requirements (e.g., term paper in lieu of exam) leading to the F no later than two weeks after release of grades.
- iv. A student who receives an “F” due to an “Incomplete” grade shall not be permitted to take a supplementary examination or submit the course requirement leading to the F.

21.0. APPEAL PROCESS FOR DISPUTED RESULTS

- i. A student who has questions about a grade received in a course should ordinarily seek redress by first consulting with the lecturer. If the issue has not been resolved after consultation, and the student believes there are grounds for appealing the grade, the student may initiate the grade-appeal.

- ii. Except under special circumstances, the student must submit a written appeal to the Dean of School within the first week after the results are released. The student must provide clearly documented evidence that demonstrates the occurrence of grounds for appeal.
- iii. If the appeal meets the criteria outlined above, the Dean shall forward the student's written appeal to the lecturer and the Head of Department for a response. The Dean shall then refer the response and all documentation to the Grade Appeals Committee consisting of three faculty members (excluding the course lecturer) appointed by the Dean, or to an external examiner.
- iv. The Grade Appeals Committee or external examiner shall consider the documentation and may decide either to change or uphold the grade.
- v. The decision of the Grade Appeals Committee or external examiner shall be forwarded to the Dean who shall inform the student, the course lecturer, the Head of Department, and the Registrar of the decision in writing.
- vi. The Registrar's office and concerned Dean of Schools will draw up a schedule to allow all qualified students to complete their examinations as soon as possible, without conflicting with the teaching timetable. The schedule should make the most efficient use of invigilators, times, and facilities.

22.0. PROGRESS

22.1. Normal Progress

A student shall pass a course if he or she scores at least 40% (D) in undergraduate and 50% (C) in postgraduate. The minimum cumulative score for undergraduate students is 40%, 50% for masters and PGD and 60% for Doctoral students.

22.2. Probation Cases

A student who fails one or two courses in a semester shall be put on probation for at least two semesters pending successful completion of the failed courses. The retake will be done when the course is next offered. A non-core course can be

substituted/replaced. A student on probation may be asked to take a lighter workload than normal.

22.3. Problem Cases

A student who fails more than two courses in a semester shall be deemed a problem case.

23.0. PROMOTION

A student is promoted if he/she has passed all semester examinations on normal progress or if he/she has passed as a probation case.

24.0. DISCONTINUATION

A student shall normally be required to discontinue his or her studies if;

- i. He or she fails the university examination(s) after the third attempt (a failed course can only be retaken twice)
- ii. He or she serves more than two years from the expected year of completion and three years for doctoral students
- iii. He or she fails at least half of the courses of a semester, and the school deems them unable to proceed.
- iv. He or she fails to attain the minimum cumulative average in at least three (3) semesters
- v. He or she keeps on probation for the same course for more than two semesters.

25.0. RETAKES

- i. The transcript will be a chronological record of when the student took the course, the course description, and the letter grade. A student who fails a course does not therefore, earn a credit for that course but his total credit hours include those of the failed course.
- ii. Students who retake courses shall pay for the courses they retake.

- iii. A candidate who has failed not more than two courses shall be permitted to retake examinations in the failed courses when the courses are offered and examined or retake the courses and re-write the course work.
- iv. A student retaking courses can be allowed a maximum of seven course units in a semester.
- v. A candidate who fails the examination in more than three courses may be permitted to retake examinations in the failed courses provided that;
 - a. there is a reason to think that he/she can improve, and
 - b. That he/she does not proceed to the courses of the following semester.
 - c. The candidate will retake the courses and re- write the course work.
- vi. To pass a retake examination, a candidate must obtain the minimum score in each unit. Retake exams will be assessed out of 100%.

26.0. REPETITION

A candidate who is not a repeater may be permitted to repeat the studies for a semester only if there are special social and/or medial circumstances submitted to the dean, normally prior to the meeting of the Academic board, to convince the academic board that the candidate is likely to do well if this concession is granted.

27.0. POLICY ON DISSERTATION/THESIS

- i. If a candidate is required to submit a dissertation, that person must do a dissertation in the major area of study that has been endorsed by the department and approved by the relevant Academic board in the case of higher degrees and postgraduate diplomas. In the case of undergraduate degrees and diplomas, the candidate must submit a dissertation which has been endorsed by the head of department.
- ii. A dissertation topic will be agreed upon and approved by the department/Academic board prior to the end of the second semester of year one, in the case of a two-year program; and in the second semester of year two in the case of a three-year program for the four-year program, it will be in the second semester of year three.

- iii. The dissertation for post graduate courses will be prepared under the supervision of a well-qualified supervisor who will be recommended by the Graduate School Board (GSB) in consultation with the relevant School Board, after consultation with the concerned department and appointed by the Graduate School Board before the beginning of the student's final academic year. Supervisors for undergraduate courses shall be appointed by the relevant school Board in consultation with the relevant HOD's.
- iv. A post graduate degree thesis shall require external supervision by a supervisor appointed by the graduate school board.
- v. The supervisor for students doing higher degrees and postgraduate diplomas will supervise not more than two students as per the graduate school policy. The supervisor for those doing undergraduate degrees and diplomas will not supervise more than five students.
- vi. Post graduate students will be required to defend their thesis (Viva –voce) before a panel selected by the GSB before an award of grades is given. The viva is not a private affair and can be attended by persons other than the panel.
- vii. The dissertation must be substantial in character and scope, concise in focus showing scholarly knowledge of the literature of the subject and demonstrating extensive research and originality of thought.
- viii. The length of the Dissertation /Thesis is as stipulated for the different programmes.
- ix. When the supervisor has approved the dissertation, it is to be submitted to the department and presented to Senate by the Graduate School Board (GSB).
- x. Every dissertation submitted for an award must be accompanied by the declaration by the candidate to the satisfaction of the Senate stating that it is his or her original work and that it has not been submitted for any award in any institution of learning.
- xi. Every dissertation will be submitted in duplicate and, if the award is given, each copy of the dissertation submitted will be the property of Africa International University.

28.0. ACADEMIC OFFENCES

28.1. General academic offences

Academic offences include but are not limited to the following;

- i. Any student found cheating in an examination shall be guilty of an academic offence.
- ii. Any student found copying coursework material from another student shall be guilty of an academic offence.
- iii. Any student involved in plagiarism (i.e., copying material from a written or electronic source without proper attribution) shall be guilty of an academic offense.
- iv. Any student who procures an impersonator to sit an examination is guilty of an academic offense.
- v. Any student who procures a ‘mercenary’ to write any coursework or dissertation shall be guilty of an academic offense.
- vi. Any other offense as stipulated in the Students’ Handbook or as may be identified as an academic offense by the Senate’s Student Disciplinary Committee.

28.2. Disciplinary Action Arising from Academic Dishonesty

Students shall observe complete honesty in all academic matters. Any form of academic dishonesty including, but not limited to, plagiarism and cheating must be reported in writing to the Dean of School by the instructor or examination supervisor, and shall incur disciplinary action as follows:

- i. Where cheating occurs in an examination, a grade of F is awarded for such a course. The student is required to repeat the course the next time it is offered. In addition, the offender shall be referred to the Student Disciplinary Committee of the Senate. The student shall be given opportunity for personal appearance before this Committee. The Senate reserves the final right of decision on all disciplinary cases, notwithstanding the requirement to forward a report to the Governing Council.
- ii. A grade of F shall be awarded when a student is guilty of plagiarism. Depending on the extent of plagiarism, as determined by the lecturer, this offence may incur

loss of marks for the assessment in which the offence was committed or outright F grade for the entire course. In addition, the student shall be referred to the Student Disciplinary Committee of the Senate. The student shall be given opportunity for personal appearance before this Committee. The Senate reserves the final right of decision on all disciplinary cases, notwithstanding the requirement to forward a report to the Governing Council.

- iii. Repeated offence in either of the cases - examination malpractice and/or plagiarism – may lead to instant expulsion.

29.0. SETTING, MODERATION OF EXAMINATION PAPERS AND THE ROLE OF INTERNAL AND EXTERNAL EXAMINERS

- i. The course lecturer sets the examination or other forms of assessment bearing the University name, the course number and title, semester and year, clear instructions to students including duration of the exercise, and the lecturer's name.
- ii. The course lecturer submits the examination paper, the marking scheme, and the course syllabus to the Dean of School who checks them for consistency, balance, style, appearance, as well as the wording and the breakdown of marks for each question.
- iii. The Dean of School submits the examination, the marking scheme, and the course syllabus to the head of department to evaluate the exam or project for length, validity of questions or issues, clarity of questions, and breakdown of marks.
- iv. The head of department submits the examination with his/her evaluation report to the Dean of School.
- v. The Dean of School may submit the examination, the marking scheme, and the syllabus to the external examiner for pre-moderation of examination.
- vi. The external examiner evaluates each examination paper or project for length, validity of questions or issues, clarity of questions, and breakdown of marks.
- vii. The Dean of School receives evaluation reports from the external examiner. Where applicable, the Dean will require amendments as specified by the external examiner; otherwise, the exam or project is considered adequate and appropriate.

- viii. The Dean of School approves the examination and submits it to the Academic Registrar for production and administration as scheduled. Academic staff shall be expected to invigilate examinations, as arranged and supervised by the Academic Registrar.
- ix. In circumstances where only internal moderation of exams applies, the lecturer submits the examinations to the Head of Department (HOD), who evaluates them in consultation with a few faculty members in the department for length, validity of questions or issues, clarity of questions, and breakdown of marks. The HOD then gives feedback to the lecturers including areas that need adjustment and reports to the Dean of School before the exams are released to the Registrar for processing and administration.
- x. The Academic Registrar gives the grade sheets and the examination scripts to the course lecturer for internal grading.
- xi. After marking, the grades are entered into the ERP by faculty members. For a failing grade, compensation of marks is allowed from 38 – 39% for undergraduate and 48-49% for postgraduate. Compensation is done from a unit within that semester. When taking marks from a unit, its grade should not change.
- xii. The course lecturer submits the grade sheets, the examination scripts, and the marking scheme to the Dean of School.
- xiii. The Dean submits the examination scripts, the marking scheme, and the syllabus to external examiner for post-examination moderation.
- xiv. The external examiner submits his/her scores to the Dean of School. In most cases, the external examiner's grade stands.
- xv. The Dean of School submits the grades to the Academic Registrar and copies to the head of department. Final grades submitted by examiners are presumed to be accurate and final.
- xvi. The Academic Boards for the Schools and the Graduate school Board meets to pass the grades as per academic calendar dates.
- xvii. Senate sits as per the academic calendar and receives the grades from the Deans for approval.
- xviii. Final grade results are issued solely from the Academic Registrar's Office following the approval of Senate.
- xix. Used exams scripts are under the custody of the exams office until they are due for disposal.

29.1 Disposal of Exam Scripts

Used examination booklets should be kept in the archives for three years after which they should be disposed through a controlled process.

30.0. GRADUATION REQUIREMENTS

30.1. General graduation requirement

Students of AIU shall be allowed to graduate on the following general requirements.

- i. have completed and passed all the required number of courses including practicum and internships,
- ii. have cleared their financial obligations to the University and
- iii. have received attestation of good character from the Senate

30.2. Credit Hour Requirements

All students shall fulfil the following programme requirements to graduate:

- i. Have attended and/ or satisfied the graduate school Board in their seminars and Dissertation and according to each schools' specifications.
- ii. Master of Divinity: Students should successfully complete a total of 84 credit hours
- iii. Other Masters degrees: Students should successfully complete a minimum total of 54 credit hours and should have earned at least a grade of C pass in the thesis.
- iv. Undergraduate: Students should successfully complete a minimum total credit hours as required per programme, and a passing grade in the project.
- v. In the case of transfer students from an uncompleted programme, the final 51% must be taken at AIU. In the case of transfer students from a Diploma to a degree programme, the final 62% must be taken at AIU.
- vi. Attain a cumulative average score of not less than the minimum grade required for the particular programme.

32.0. CLASSIFICATION OF DEGREES

32.1. Undergraduate Degrees

In the undergraduate degree programmes, AIU recognizes the different levels of outstanding performance, as measured by the cumulative average score on work done up to the graduation point. The final classification of the degree will be based on all required units taken during the degree program. The total number of units required may vary depending on the course/program. The final score will be based on cumulative mean score in all the four years to arrive at the following final classification. The recognition levels are:

Percentage	Letter Grade	Level of Achievement	Degree Classification by Average	Diploma Classification by Average
70% and above	A	Excellent	First Class Honors	Distinction
60-69%	B	Good	Second Class Hon. (Upper Division)	Credit
50- 59%	C	Fair	Second Class Hon. (Lower Division)	Pass
40-49%	D	Poor	Pass	Pass
0-39%	F	0.0- Failure	N/A	
	I	Incomplete		
	W	Withdrawal		

32.2. Post Graduate Degrees

The post graduate degrees have no classification. AIU recognizes academic excellence by presenting an award of Academic Excellence to a candidate who has attained the highest academic

standard as measured by the cumulative average score in each academic level per school, and this grade must be an “A”. Undergraduate students who come top of their programme level per school are also awarded Academic Excellence awards and their cumulative average grades must also be an “A”.

32.0 CERTIFICATES

32.1 Security Features

All AIU academic certificates and transcripts have security features that can be verified by the Registrar’s office. They ensure the authenticity of AIU’s certification.

32.2 Issuance of certificates

All certificates are ready for collection immediately after graduation. They are issued upon clearance from relevant offices.

32.3 Certificate Storage

After graduation, the graduates are given specific timelines to collect their certificates, usually 3 months after which a storage charge applies and is accrued every 1st October at a rate determined by AIU.

33.0 COURSE NUMBERING SYSTEM

A key to the interpretation of course numbers follows:

33.1 Letter Codes:

School of Education, Arts and Social Sciences (SEAS)

PSY: Psychology, Undergraduate & Postgraduate

DGP: Psychology, Diploma

BDS: Development Studies, Undergraduate

DCD: Development Studies, Diploma

EDU: Education
HIS: History
KIS: Kiswahili
LIT: Literature
ENG: English
BIT: Information Technology
GEO: Geography
MAT: Mathematics
RED: Religious Education

EDE: Education, Early Childhood Development

LTC: Translation Studies
LTCO: Translation Studies, Communication Track
LTL: Translation Studies, Descriptive Linguistics Track
LTS: Translation Studies, Translation Track

School of Business and Economics (SBE)

BIT: Information Technology, Undergraduate
DIT: Information Technology, Diploma

Thematic Areas

ACC Accounting
BAF School Common Units
DMG Disaster Management
ECO Economics
ENT Entrepreneurship
FIN Finance
HRM Human Resource Management
LAW Courses with Legal basis
LGV Leadership and Governance
MAQ Mathematics (Quantitative and Qualitative)
MGT Management
MKT Marketing
MLD Leadership (MAOL)
BAM Business Administration and Management
PBL Leadership Development
PBS Strategy and Development
PCL Civic Leadership
PGL Governance and Leadership
PLG Leadership and Governance
PLP Leadership Psychology
PPG Public Governance
PRS Religious Sector Leadership and Governance
PSL Statesmanship and Political Leadership
PSM Procurement

RSM Research Methods
RTH Research Thesis
STM Strategic Management

Nairobi Evangelical Graduate School of Theology (NEGST)

CHS Church History
PAS Pastoral Studies
THE Theological Studies
MSS Mission Studies
BSS Biblical Studies
BLS Biblical Languages
BTS Biblical Theology
GES General Studies
CHC Healthy Church, Certificate

UCC University Common Core courses

33.2 Digit Codes:

001: Indicates Certificate level courses

010: Indicates 1st year Diploma level courses

020: Indicates 2st year Diploma level courses

100: Indicates 1st year bachelor level courses

200: Indicates 2nd year bachelor level courses

300: Indicates 3rd year bachelor level courses

400: Indicates 4th year bachelor level courses

500: Indicates 1st Year Masters courses

600: Indicates 2nd Year Masters courses

700: Indicates 3rd Year Masters courses

800-900: Indicates Doctoral courses

33.3 Course Numbering Sequence

Course numbers consist of three letters followed by three numbers. The first three letters indicate the category of course; the numbers indicate the year.

34.0 GENERAL COURSE REQUIREMENTS FOR ALL PROGRAMMES

This section summarizes the courses required for each programme outlined per school and programme level.

34.1 NAIROBI EVANGELICAL GRADUATE SCHOOL OF THEOLOGY (NEGST) DOCTORATE COURSES (TEMPLATES)

Doctor of Philosophy in Theological Studies (PHDTHEO)

Common Core Courses across the PhD in Theological Studies

BSS809 Advanced Philosophical & Biblical Hermeneutics

THE903 Theological Trends in Africa (Trends in African Theology)

WCS901 Key Concepts in World Christianity

a) PhD Theological Studies (Biblical Studies)

Year 1 Semester 1 (September)			Year 1 Semester 2 (January)			Semester 3 (May)		
Code	Course Title	Hrs	Code	Course Title	Hrs	Code	Course Title	Hrs
BSS809	Advanced Philosophical and Biblical Hermeneutics	3	WCS901	Key Concepts in World Christianity	3	BSS810	Seminar in Biblical Criticisms	3
BSS810	Seminar in Biblical Criticisms	3	THE903	Trends in African Christian Theology	3	BBL811 OR	Advanced Hebrew Grammar & Exegesis <u>OR</u>	3
BBL811 OR	Advanced Hebrew Grammar & Exegesis <u>OR</u>	3	BSS809	Hermeneutics	3	BBL813	Advanced Greek Grammar & Exegesis	
BBL813	Advanced Greek Grammar & Exegesis		BSS___	OT Book Exegesis	3			
Total	9 Hours			12 Hours			6 Hours	

Year 2 Semester 1 (September)			Year 2 Semester 2 (January)		
Code	Course Title	Hrs	Code	Course Title	Hrs
BBL812	BL812 Septuagint	3	BSS991	PhD Dissertation Proposal Preparation	3
BBL820	BL820 Biblical Aramaic	3			
	Elective	3			
Total	6 or 9 Hours			3 Hours	

YEARS 3–6

BSS 992-999 PhD Dissertation Registration and Writing Phase

Core Courses in the PhD-BS

BBL811 Biblical Hebrew Revision (Advanced Hebrew Grammar and Exegesis)

BBL812 Seminar in the Septuagint

BBL813 New Testament Greek Revision (Advanced Greek Grammar & Exegesis)

BSS810 Seminar in Biblical Criticisms

Representative Electives:

BBL820 Biblical Aramaic

BBL821–25 Reserved for Ancient Near Eastern Languages
(Syriac, Akkadian, Ugaritic, Targumic Aramaic)

BBL830 Hebrew Teaching Practicum

BBL841 Advanced Hebrew Grammar

BBL842 Advanced Greek Grammar

BSS808 History of the New Testament Era

BSS812 History of Biblical Israel

BSS815 Social Sciences Approaches to Biblical Studies

BSS830 Readings in Old Testament Theology

BSS840 Readings in New Testament Theology

BSS841 Seminar in Ezekiel Studies

BSS842–45 Reserved for seminars in

“Advanced Exegesis of the Old Testament.”

BSS846 Advanced Exegesis of Acts

BSS847 Advanced Exegesis of 1 Timothy

BSS848 Advanced Greek Exegesis

BSS849 Readings in NT Background

BSS850 Intertestamental Period

BSS851 Ancient Near Eastern Literature (Extra-biblical)

BSS855 Old Testament Textual Criticism

BSS856 New Testament Textual Criticism

BSS913 Advanced Exegesis of Ezekiel

BSS914-4 Advanced Exegesis of Minor Prophets: Obadiah

BSS916 Advanced Exegesis of Hebrews

BSS917 Seminar on Special Topics

BSS918 Advanced Exegesis of Ephesians

BSS919 Advanced Exegesis of 1 Peter

BSS991 Preparation of Dissertation Proposal

b) PhD Theological Studies (Mission Studies)

Year 1 Semester 1			Year 1 Semester 2		
Code	Course Title	Hrs	Code	Course Title	Hrs
WCS901	Key Concepts in World Christianity	3	MSS904	Anthropological Reflections on Modern African Society/Contextualization	3
THE901	Trends in African Christian Theology	3	MSS902	Hermeneutical Approaches to Scripture	3
BSS809	Advanced Philosophical and Biblical Hermeneutics	3			
MSS901	Research Methods	3			
Total	12 Hours			6 Hours	

Year 2 Semester 1			Year 2 Semester 2			Year 3		
Code	Course Title	Hrs	Code	Course Title	Hrs	Code	Course Title	Hrs
MSS905	Anthropological Research Methods in Society	3		Qualifying Exam			Dissertation	
	Elective*	3		Proposal Defense		Total	15 Hours	
Total	6 Hours							

- Elective means that students can select a seminar of their interest but relevant to their focus or research area. And the seminar must be on offer by any of the departments at AIU.
- Qualifying Exam is graded as either PASS or FAIL.
- The Schedule for Departmental seminars (MS) is FLEXIBLE. That means the latter are scheduled on select dates discussed and agreed by all concerned students and lecturer.

c) PhD Theological Studies (Practical Theology)

Year 1 Semester 1			Year 1 Semester 2		
Code	Course Title	Hrs	Code	Course Title	Hrs
BSS801	Advanced Philosophical and Biblical Hermeneutics	3	THE802	Trends in African Christian Theology	3
PTS800	Doctoral Research and Writing	3	PTS903	Qualitative Research Methods	3
WCS803	Key concepts in world Christianity	3	PTS904	Transformational Leadership and Spiritual Formation	3
	TOTAL	9			9
Year 2 Semester 1			Year 2 Semester 2		
Code	Course Title	Hrs	Code	Course Title	Hrs
PTS905	Leadership for Change	3	PTS960	Conflict Transformation and Trauma Awareness & Recovery	3
PTS950	Theories and Practices of Personal Peace Making	3	PTS906	Theology and Development	3
PTS902	Current Trends in Practical Theology	3	PST907	Transformational Leadership and Community Change	3
	TOTAL	9			9

Comprehensive Exams/Proposal Defense					
Year 3 Semester 1			Year 3 Semester 2		
Code	Course Title	Hrs	Code	Course Title	Hrs
THE991	Dissertation I	3	THE992	Dissertation II	3
	TOTAL	3			3
Year 4 Semester 1			Year 4 Semester 2		
Code	Course Title	Hrs	Code	Course Title	Hrs
THE993	Dissertation III	3	THE994	Dissertation IV	3
	TOTAL	3			3

d) PhD Theological Studies (Systematic Theology)

Year 1 Semester 1			Year 1 Semester 2		
Code	Course Title	Hrs	Code	Course Title	Hrs
BSS801	Advanced Hermeneutics	3	THE903	Trends in African Christian Theology	3
THE900	Theological Methods	3	WCS901	Key concepts in world Christianity	3
	TOTAL	6			6
Year 2 Semester 1			Year 2 Semester 2		
Code	Course Title	Hrs	Code	Course Title	Hrs
THE904	Theology & the Social, Political, and Economic Life of Africa	3	THE908	Ecclesiology and Community	3
THE902	Contemporary issues in Theology	3	THE909	Pneumatology and the powers	3
THE907	Contemporary Christologies & Soteriologies	3	THE910	Contemporary views of God	3
	TOTAL	9			9

Year 3 Semester 1			Year 3 Semester 2		
Code	Course Title	Hrs	Code	Course Title	Hrs
THE991	Dissertation I	3	THE992	Dissertation II	3
	TOTAL	3			3
Year 4 Semester 1			Year 4 Semester 2		
Code	Course Title	Hrs	Code	Course Title	Hrs
THE993	Dissertation III	3	THE994	Dissertation IV	3
	TOTAL	3			3

e) PhD Theological Studies (Theology & Culture)

Year 1 Semester 1			Year 1 Semester 2		
Code	Course Title	Hrs	Code	Course Title	Hrs
BSS801	Advanced Hermeneutics	3	THE903	Trends in African Christian Theology	3
THE900	Theological Methods	3	WCS901	Key concepts in world Christianity	3
	TOTAL	6			6
Year 2 Semester 1			Year 2 Semester 2		
Code	Course Title	Hrs	Code	Course Title	Hrs
THE904	Theology & the Social, Political, and Economic Life of Africa	3	THE912	Social & Cultural Perspectives on Religion & Theology	3
THE902	Contemporary issues in Theology	3	THE914	Theology, Aesthetic & Arts	3
THE911	Theology & Culture	3	THE913	Theology & Popular Culture	3
	TOTAL	9			9

Year 3 Semester 1			Year 3 Semester 2		
Code	Course Title	Hrs	Code	Course Title	Hrs
THE991	Dissertation I	3	THE992	Dissertation II	3
	TOTAL	3			3

Year 4 Semester 1			Year 4 Semester 2		
Code	Course Title	Hrs	Code	Course Title	Hrs
THE993	Dissertation III	3	THE994	Dissertation IV	3
	TOTAL	3			3

f) PhD Theological Studies (Theology & Development)

Year 1 Semester 1			Year 1 Semester 2		
Code	Course Title	Hrs	Code	Course Title	Hrs
BSS801	Advanced Hermeneutics	3	THE903	Trends in African Christian Theology	3
THE900	Theological Methods	3	WCS901	Key concepts in world Christianity	3
	TOTAL	6			6
Year 2 Semester 1			Year 2 Semester 2		
Code	Course Title	Hrs	Code	Course Title	Hrs
THE904	Theology & the Social, Political, and Economic Life of Africa	3	THE915	Poverty and Development	3
THE902	Contemporary issues in Theology	3	THE917	Globalization, the poor & Christian Mission	3
THE914	Theories of Development	3	THE920	Development Tools and Practices	3
	TOTAL	9			9

Year 3 Semester 1			Year 3 Semester 2		
Code	Course Title	Hrs	Code	Course Title	Hrs
THE991	Dissertation I	3	THE992	Dissertation II	3
	TOTAL	3			3
Year 4 Semester 1			Year 4 Semester 2		
Code	Course Title	Hrs	Code	Course Title	Hrs
THE993	Dissertation III	3	THE994	Dissertation IV	3
	TOTAL	3			3

g) PhD Theological Studies (World Christianity)

Year 1 Semester 1			Year 1 Semester 2		
Code	Course Title	Hrs	Code	Course Title	Hrs
BSS809	Advanced Philosophical and Biblical Hermeneutics	3	THE903	Trends in African Christian Theology	3
WCS900	Researching World Christianity		WCS901	Key Concepts in World Christianity	3
	TOTAL	6			6

Year 2 Semester 1			Year 2 Semester 2		
Code	Course Title	Hrs	Code	Course Title	Hrs
WCS904	Dynamics of global Revival	3	WCS905	Migration to World Christianity	3
WCS906	Global Pentecostalism	3	WCS902	World Christianity and World Politics	3
	TOTAL	6			6

Year 3 Semester 1			Year 3 Semester 2		
Code	Course Title	Hrs	Code	Course Title	Hrs
THE991	Dissertation I	3	THE992	Dissertation II	3
	TOTAL	3			3

Year 4 Semester 1			Year 4 Semester 2		
Code	Course Title	Hrs	Code	Course Title	Hrs
THE993	Dissertation III	3	THE994	Dissertation IV	3
	TOTAL	3			3

DOCTOR OF MINISTRY (DMIN)

Six (6) seminars are required for graduation.

Core Courses

- PAS801 Doctoral Research and Writing
- PAS810 Transformational Leadership and Spiritual Formation
- PAS815 Leadership for Change
- PAS805 Qualitative Research Methods

Electives

- PAS820: Building Capacity through Mentoring
- PAS835: Theory and Practice of Personal Peacemaking
- PAS840: Conflict Transformation and Trauma Awareness and Recovery
- PAS845: Peacemaking in church and community
- PAS850: Theology and Development
- PAS870: Transformational Leadership and Community Transformation
- PAS890: Directed Reading in Leadership
- PAS891: Directed Reading in Peacebuilding
- PAS892: Directed Reading in Community Transformation
- PAS901 - 909: Dissertation

Year 1 Semester 1			Year 1 Semester 2		
Code	Course Title	Hrs	Code	Course Title	Hrs
PAS801	Doctoral Research and Writing	3	PAS815	Leadership for Change	3
PAS810	Transformational Leadership and Spiritual Formation	3	PAS805	Qualitative Research Methods	3
Total	6 Hours			6 Hours	
Year 2 Semester 1			Year 2 Semester 2		
Code	Course Title	Hrs	Code	Course Title	Hrs
	Elective 3	3		Comprehensive Exams (3 months)	
	Elective 4	3		Proposal Defense (3 months)	
Total	6 Hours				
Year 3 & 4					
Code	Course Title	Hrs			
	Dissertation Writing				
	Dissertation Writing				

POST-GRADUATE MASTERS COURSES

Master of Divinity (MDIV)

a) Master of Divinity General Studies (MDIVGEN)

Key: U/core (9cr), P/Core (33cr) Concentration (42cr) = 88 Credit hours

Semester 1 (Sept)			Semester 2 (Jan)			Semester 3 (May)		
Code	Course Title	Crs	Code	Course Title	Crs	Code	Course Title	Crs
BSS501	Hermeneutics	3	THE602	Systematic Theology II	3		Elective	
EDU630	Research Methods	3	CHS502	History of African Christianity	3		Elective	
PAS500	Foundations of Chr Life & Mission	3	THE605	Christian Ethics	3		Elective	
CHS501	History of World Christianity	3	MSS605	Leadership Development	3	BSS501	Hermeneutics	
THE601	Systematic Theology I	3					Elective	
BBL501 OR BBL511	Elementary Greek I OR Elementary Hebrew I	3	BBL502 OR BBL512	Elementary Greek II OR Elementary Hebrew II	3			
		18			15			12

Semester 4 (Sept)			Semester 5 (Jan)			Semester 6 (May)		
Code	Course Title	Crs	Code	Course Title	Crs	Code	Course Title	Crs
MSS604	ATR	3	PAS603	Pastoral Care of Family	3		Elective	3
BBT603	Biblical Theology	3	EDU525	Educational Ministries	3		Elective	3
PAS520	Homiletics	3	BBS771	Thesis 1	3		Elective	3
	Elective	3	BSS661	Internship	3	THE772	Thesis II	3
	Elective	3	MSS501	Introduction to Missions	3	PAS763	Senior Reflection	1
		15			15			13

b) Master of Divinity in Theological Studies (MDIVTHEO)

Key: U/core (9cr), P/Core (39cr) Concentration (39cr) = 85 Credit hours

Semester 1 (Sept)			Semester 2 (Jan)			Semester 3 (May)		
Code	Course Title	Crs	Code	Course Title	Crs	Code	Course Title	Crs
BSS501	Hermeneutics	3	THE602	Systematic Theology II	3	THE608	Theology & Culture	3
EDU630	Research Methods	3	THE703	Theo of Justice	3			
PAS500	Foundations of Christian Life & Mission	3	THE605	Christian Ethics	3	THE609	Christian Apologetics	3
BBL501 OR BBL511	Elementary Greek I OR Elementary Hebrew I	3	BBL502 OR BBL512	Elementary Greek II OR Elementary Hebrew II	3	THE606	African Christian Theology	3
CHS501	History of World Christianity	3	MSS501	Introduction to Missions	3			
THE601	Systematic Theology I	3	MSS605	Leadership Development	3			
		18			18			9

Semester 4 (Sept)			Semester 5 (Jan)			Semester 6 (May)		
Code	Course Title	Crs	Code	Course Title	Cr s	Code	Course Title	Cr s
THE704	Theo of Poverty and Suffering	3	CHS502	History of African Christianity	3	MSS604	ATR	
THE503	Philosophy of Religions	3	PAS603	Pastoral Care of the Family	3	MSS543	Comparative Study of Religions	
PAS520	Homiletics	3	EDU525	Educational Ministries	3	MSS536	Pastoral Theology	3
MSS604	African Traditional Religions	3	BSS630	Cultural World of the Bible	3	PAS763	Senior Reflection	1
MSS543	Comparative Study of Religions	3	THE661	Internship	3	THE772	Thesis II	3
			BBS771	Thesis 1	3			
		15			18			7

C) Master of Divinity in Biblical Studies (MDIVBS)

Key: U/core (16cr), P/Core (54cr) Concentration & Electives (18cr) = **88 Credit hours** (not counting Semester 3 & 6 courses)

Semester 1 (Sept)			Semester 2 (Jan)			Semester 3 (May)		
Code	Course Title	Crs	Code	Course Title	Crs	Code	Course Title	Crs
BSS501	Hermeneutics	3	CHS502	History of African Christianity	3	BSS501	Hermeneutics	3
EDU630	Research Methods	3	BBL502 OR BBL512	Elementary Greek II OR Elementary Hebrew II	3	BSS601-1 to BSS629	Bible Exposition (NT)	3
BBL501 OR BBL511	Elementary Greek I OR Elementary Hebrew I	3	MSS501	Introduction to Missiology	3	BSS601-1 to BSS629	Bible Exposition (OT)	3
CHS501	History of World Christianity	3	BSS630	Cultural World of the Bible	3			
PAS500	Foundations of Chr. Life/Mission	3						

Semester 4 (Sept)			Semester 5 (Jan)			Semester 6 (May)		
Code	Course Title	Crs	Code	Course Title	Crs	Code	Course Title	Crs
THE601	Systematic Theology I	3	THE602	Systematic Theology II	3	BSS501	Hermeneutics	3
BBL601 OR BBL611	Exegesis of Greek Epist. Lit. OR Exegesis of Hebrew Narrative Lit.	3	BBL602 OR BBL612	Exegesis of Greek Narrative Lit. OR Exegesis of Hebrew Poetic Lit.	3	BSS601-1 to BSS629	Bible Exposition (NT)	3
	Elective /Language	3	BS601-1 to BS629	Bible Exposition (NT Book)/Language	3	BSS601-1 to BSS629	Bible Exposition (OT)	3
PAS520	Homiletics I	3	MSS605	Leadership Development	3			
BSS601-1 to BSS629	Bible Exposition (OT Book)	3	EDU611	Subject Area Methods	3			

d). Master of Divinity in Missions General (MDIVMS)

Key: U/core (9cr), P/Core (46cr) Concentration (36cr) = 91 Credit hours

Semester 1 (Sept)			Semester 2 (Jan)			Semester 3 (May)		
Code	Course Title	Crs	Code	Course Title	Crs	Code	Course Title	Crs
EDU630	Educational R/Methods	3	CHS502	History of A/Christianity	3	THE609	C/ Apologetics	3
PAS500	Foundations of C/Life & Mission	3	THE605	Christian Ethics	3	MSS543	C/S of Religion	3
MSS502	E/ Discipleship	3	MSS760	A/R/Methods	3	BSS501	Hermeneutics	3
MSS603	S/ Anthropology	3	MSS520	B/T of Mission	3	MSS603	S/ Anthropology	
MSS602	Islam in Africa	3	MSS605	Leadership Dvp		MSS602	Islam in Africa	
BBL501 OR BBL511	Elementary Greek I OR Elementary Hebrew I	3	BBL502 OR BBL512	Elementary Greek II OR Elementary Hebrew II	3			
		18			15			9

Semester 4 (Sept)			Semester 5 (Jan)			Semester 6 (May)		
Code	Course Title	Crs	Code	Course Title	Crs	Code	Course Title	Crs
CHS501	History of World Christianity	3	THE602	Systematic Theology II	3	MSS544	P/Encounter	3
MSS601	Contextualization	3	BSS630	Cultural World of the Bible	3	MSS606	M/ Practicum	3
MSS604	ATR	3	EDU525	Educational Ministries	3	MSS772	Thesis II	3
BBT603	Biblical Theology	3	EDU611	Subject Area Methods	3	PAS763	Senior reflection	1
THE601	Systematic Theology I	3	PAS603	Past Care of Family	3			
MSS521	Urban Missions	3	MSS771	Thesis 1	3			
		18			18			10

e). Master of Divinity in Missions (Islamic Studies) - MDIVMSI

Key: U/core (9cr), P/Core (40cr) Concentration (36cr) = 85 Credit hours

Semester 1 (Sept)			Semester 2 (Jan)			Semester 3 (May)		
Code	Course Title	Crs	Code	Course Title	Crs	Code	Course Title	Crs
PAS500	Foundations of Chr Life & Mission	3	CHS502	History of African Christianity	3	MSS543	C/S of Religion	3
MSS603	S/ Anthropology	3	THE605	Christian Ethics	3	MSS603	S/ Anthropology	
MSS602	Islam in Africa	3	MSS760	A/R/Methods	3	BSS501	Hermeneutics	3
EDU630	Research Methods	3	MSS605	Leadership Dvp	3	MSS602	Islam in Africa	
BBL501 OR BBL511	Elementary Greek I OR Elementary Hebrew I	3	BBL502 OR BBL512	Elementary Greek II OR Elementary Hebrew II	3			
BBT603	Biblical Theology	3	MSS607	Comm Gosp in Inter-religious context (Ev to muslims)	3			
		18			18			6

Semester 4 (Sept)			Semester 5 (Jan)			Semester 6 (May)		
Code	Course Title	Crs	Code	Course Title	Crs	Code	Course Title	Crs
THE601	Systematic Theology I	3	PAS603	Pastoral Care of the Family	3	MSS544	P/Encounter	3
MSS546	Folk R/P in Islam	3	THE602	Systematic Theology II	3	MSS604	ATR	3
CHS501	History of World Christianity	3	MSS606	M/ Practicum	3	MSS772	Thesis II	3
LT530	History of Bible Translation	3	BSS630	Cultural World of the Bible	3	PAS763	Senior Reflection	1
MSS611	Women in Islam	3	MSS771	Thesis 1	3			
MSS549	Christian Relations with Muslims (Combined with Christian Apologetics)	3						
MSS604	ATR							
		18			15			10

f). Master of Divinity in Pastoral Studies (MDIVPS)

Key: U/core (9cr), P/Core (43cr) Concentration (36cr) = 88 Credit hours

Semester 1 (Sept)			Semester 2 (Jan)			Semester 3 (May)		
Code	Course Title	Crs	Code	Course Title	Crs	Code	Course Title	Crs
BSS501	Hermeneutics	3	THE602	Systematic Theology II	3	PAS506	Pastoral Counselling	3
EDU630	Research Methods	3	CHS502	History of African Christianity	3	PAS501	Church Min & Mission	3
PAS500	Foundations of Chr Life & Mission	3	THE605	Christian Ethics	3	MSS543	C/S of Religion	3
THE601	Systematic Theology I	3	MSS605	Leadership Dvp	3			
MSS602	Islam in Africa	3	MSS501	Introduction to Missions	3			
BBL501 OR BBL511	Elementary Greek I OR Elementary Hebrew I	3	BBL502 OR BBL512	Elementary Greek II OR Elementary Hebrew II	3			
		18			18			9

Semester 4 (Sept)			Semester 5 (Jan)			Semester 6 (May)		
Code	Course Title	Crs	Code	Course Title	Crs	Code	Course Title	Crs
PAS502	Pastoral Ministry	3	PAS603	Pastoral Care of Family	3	PAS620	Discp & Spir. Formation	3
MSS604	ATR	3	BSS630	C/W of the Bible	3	MSS604	ATR	
BBT603	Biblical Theology	3	EDU611	Subject Area Methods	3			
CHS501	History of World Christianity	3	EDU525	Educational Ministries	3	PAS605	Steward. Of God's Resources	3
PAS520	Homiletics	3	BBS771	Thesis 1	3	THE772	Thesis II	3
			BSS661	Internship	3	PAS763	Senior Reflection	1
		15			18			10

g). Master of Divinity in Church History (MDIVCH)

Key: U/core (18cr), P/Core (51cr) Concentration (29cr) = 84 Credit hours

Semester 1 (Sept)			Semester 2 (Jan)			Semester 3 (May)		
Code	Course Title	Crs	Code	Course Title	Crs	Code	Course Title	Crs
BSS501	Hermeneutics	3	THE602	Systematic Theology II	3	CHS504	Early Afr Chrstianity	3
EDU630	Research Methods	3	CHS502	History of African Christianity	3	CHS505	CH for Leaders	3
PAS500	Foundations of Chr Life & Mission	3	THE605	Christian Ethics	3	MSS543	C/S of Religion	3
THE601	Systematic Theology I	3	MSS605	Leadership Dvp	3	CHS503	Historiography	3
CHS501	History of World Christianity	3	MSS501	Introduction to Missions	3	CHS506	Hist of Theo & Spt	3
BBL501 OR BBL511	Elementary Greek I OR Elementary Hebrew I	3	BBL502 OR BBL512	Elementary Greek II OR Elementary Hebrew II	3	TS501	Vernacular Scriptures	3
		18			18			18

Semester 4 (Sept)			Semester 5 (Jan)		
Code	Course Title	Crs	Code	Course Title	Crs
MSS604	ATR	3	PAS603	Pastoral Care of Family	3
BBT603	Biblical Theology	3	BSS630	C/W of the Bible	3
PAS520	Homiletics	3	EDU611	Subject Area Methods	3
THE771	Thesis I	3	EDU525	Educational Ministries	3
			CHS700	Practicum	3
			THE772	Thesis II	3
		12			18

MASTER OF ARTS (MA) PROGRAMMES

a). Master of Arts in Theological Studies (MATHEO)

Key: U/core (9cr), P/Core (28cr) Concentration (24cr) = 61 Credit hours

Semester 1 (Sept)			Semester 2 (Jan)		
Code	Course Title	Crs	Code	Course Title	Crs
BSS501	Hermeneutics	3	THE602	Systematic Theology II	3
EDU630	Research Methods	3	THE703	Theo of Justice	3
PAS500	Foundations of Chr Life & Mission	3	THE605	Christian Ethics	3
BBL501 OR BBL511	Elementary Greek I OR Elementary Hebrew I	3	BBL502 OR BBL512	Elementary Greek II OR Elementary Hebrew II	3
CHS501	History of World Christianity	3	MSS605	Leadership Dvp	3
THE601	Systematic Theology I	3			
		18			15

Semester 3 (May)			Semester 4 (Sept)		
Code	Course Title	Crs	Code	Course Title	Crs
THE608	Theo & Culture	3	THE704	Theo of Poverty and Suffering	3
THE609	C/ Apologetics	3	THE503	Philosophy of Religions	3
THE606	African Christian Theology	3	PAS763	Senior Reflection	1
PAS561	Field Ministry I	3	THE772	Thesis II	3
BBS771	Thesis 1	3	MSS543	C/S of Religion	
MSS543	C/S of Religion	3			10
BSS501	Hermeneutics				
		18			

b). Master of Arts in Biblical Studies (MABS)

Key: U/core (16cr), P/Core (24cr) Concentration (18cr) = **58 Credit hours** (not counting Semester 3 courses)

Semester 1 (Sept)			Semester 2 (Jan)			Semester 3 (May)		
Code	Course Title	Crs	Code	Course Title	Crs	Code	Course Title	Crs
BSS501	Hermeneutics	3	CHS502	History of African Christianity	3	BSS501	Hermeneutics	3
EDU630	Educational Research Methods	3	BBL502 OR BBL512	Elementary Greek II OR Elementary Hebrew II	3	BSS601-1 to BSS129	Bible Exposition (NT Book)	3
BBL501 OR BBL511	Elementary Greek I OR Elementary Hebrew I	3	MSS605	Leadership Development	3	BSS601-1 to BSS129	Bible Exposition (OT Book)	3
CHS501	History of World Christianity	3	BSS601-1 to BSS129	Bible Exposition (NT Book)	3			
BSS601-1 to BSS129	Bible Exposition (OT Book)	3						
PAS500	Foundations of Chr. Life/Mission	3						

Semester 4 (Sept)			Semester 5 (Jan)		
Code	Course Title	Crs	Code	Course Title	Crs
THE601	Systematic Theology I	3	THE602	Systematic Theology II	3
BBT603	Biblical Theology	3	THE605	Christian Ethics	3
BBL601 OR BBL611	Exegesis of Greek Epist. Lit. Exegesis of Hebrew Narrative Lit.A	3	BBL602 OR BBL612	Exegesis of Greek Narrative Lit. OR Exegesis of Hebrew Poetic Lit.	3
BSS661	Internship	3	PAS763	Senior Reflection	1
BBS771	Thesis 1	3	BBS772	Thesis 2	3

c). Master of Arts in Missions General (MAMS)

Key: U/core (9cr), P/Core (15cr) Concentration (36cr) = 60 Credit hours

Semester 1 (Sept)			Semester 2 (Jan)			Semester 3 (May)		
Code	Course Title	Crs	Code	Course Title	Crs	Code	Course Title	Crs
BSS501	Hermeneutics	3	MSS521	Urban Missions	3	MSS771	Thesis 1 (Proposal)	3
EDU630	Research Methods	3	CHS502	History of A/Christianity	3	THE609	C/ Apologetics	3
PAS500	Foundations of C/L& Mission	3	THE605	Christian Ethics	3	MSS606	M/ Practicum	3
MSS502	E/ Discipleship	3	MSS760	A/R/Methods	3	MSS543	C/S of Religion*	3
MSS603	S/ Anthropology	3	MSS520	B/T of Mission	3	MSS604	African T/Religion	3
MSS602	Islam in Africa	3	MSS605	Leadership Dvp	3	BSS501	Hermeneutics	
						MSS603	S/ Anthropology	
						MSS602	Islam in Africa	
		18			18			15

Semester 4 (Sept)		
Code	Course Title	Crs
MSS601	Contextualization	3
MSS543	C/S of Religion	
MSS508	African I/Christianity	3
MSS772	Thesis II (Thesis)	3
		12

d). Master of Arts in Missions (Islamic Studies) - MAMSI

Key: U/core (9cr), P/Core (9 cr) Concentration (36cr) = 60 Credit hours

Semester 1 (Sept)			Semester 2 (Jan)			Semester 3 (May)		
Code	Course Title	Crs	Code	Course Title	Crs	Code	Course Title	Crs
MSS603	S/ Anthropology	3	CHS502	History of African Christianity	3	MSS609	Understanding the Qur'an	3
BSS501	Hermeneutics	3	THE605	Christian Ethics	3	MSS606	M/ Practicum	3
PAS500	Foundations of Chr Life & Mission	3	MSS760	A/Research Methods	3	MSS771	Thesis 1	3
MSS602	Islam in Africa	3	MSS607	Comm Gospel in Inter-religious context (Sharing Your Faith with Muslims)	3	MSS602	Islam in Africa	
MSS546	Folk R/P in Islam	3	MSS605	Leadership Development	3	MSS603	S/ Anthropology	
EDU630	Research Method	3	MSS608	Introduction to Arabic	3			
		18			18			9

Semester 4 (Sept)		
Code	Course Title	Crs
MSS611	Women in Islam	3
BBT603	Biblical Theology	3
MSS615	Islamic Law (Sharia)	3
MSS772	Thesis II	3
MSS549	Christian Relations with Muslims (Combined with Christian Apologetics)	3
		15

e). Master of Arts in Pastoral Studies (MAPS)

Key: U/core (9cr), P/Core (24cr) Concentration (27cr) = 61 Credit hours

Semester 1 (Sept)			Semester 2 (Jan)			Semester 3 (May)		
Code	Course Title	Crs	Code	Course Title	Crs	Code	Course Title	Crs
BSS501	Hermeneutics	3	THE602	Systematic Theology II	3	THE609	C/ Apologetics	3
EDU630	Research Methods	3	CHS502	History of African Christianity	3	PAS501	Church Min & Mission	3
PAS500	Foundations of Chr Life & Mission	3	THE605	Christian Ethics	3	BBS771	Thesis 1	3
MSS543	C/S of Religion	3	MSS605	Leadership Developmnet	3	PAS506	Pastoral Counselling	3
MSS602	Islam in Africa	3	PAS603	Past Care of Family	3	MSS543	C/S of Religion	
THE601	Systematic Theology I	3				PAS561	Field Ministry I	3
		18			15			15

Semester 4 (Sept)		
Code	Course Title	Crs
PAS502	Pastoral Ministry	3
PAS520	Homiletics	3
THE772	Thesis II	3
PAS763	Senior Reflection	1
BBT603	Biblical Theology	3
		13

f). Master of Arts in Church History (MACH)

Key: U/core (18cr), P/Core (18cr) Concentration/Core-(18cr) = 54

Semester 1 (Sept)			Semester 2 (Jan)			Semester 3 (May)		
Code	Course Title	Crs	Code	Course Title	Crs	Code	Course Title	Crs
BSS501	Hermeneutics	3	THE602	Systematic Theology II	3	CHS505	CH for Leaders	3
EDU630	Research Methods	3	CHS502	History of African Christianity	3	MSS543	C/S of Religion	3
PAS500	Foundations of Chr Life & Mission	3	THE605	Christian Ethics	3	CHS503	Historiography	3
THE601	Systematic Theology I	3	MSS605	Leadership Dvp	3	CHS506	Hist of Theo & Spt	3
CHS501	History of World Christianity	3				THE771	Thesis I	
		15			12			15

Semester 4 (Sept)		
Code	Course Title	Crs
MSS602	Islam in Africa	3
BBT603	Biblical Theology	3
THE609	C/ Apologetics	3
THE772	Thesis II	3
		12

POSTGRADUATE DIPLOMA

Postgraduate Diploma in Theology

Semester 1			Semester 2		
Course	Title	Hrs	Course	Title	Hrs
EDU630	Research Methods	3	MSS512	African Cultures and Current Socio-Political and Religious Issues in Africa	3
THE511	Philosophy for Understanding Theology	3	THE514	Christian Apologetics	3
THE512	Theology of Religions	3	THE605	Christian Ethics	3
BBS502	Old Testament Introduction	3	BBS503	New Testament Introduction	3
THE513	Introduction to Theological Studies	3	PAS504	Theology and Ministry	3
	Total	15 hrs		Total	15hrs

UNDERGRADUATE BACHELORS COURSES

Bachelor of Theology (BTH)

Year One (51 Hrs)

Code	Semester 1 (September)	Hrs	Code	Semester 2 (January)	Hrs	Code	Semester 3 (May)	Hrs
UCC111	Bible Interpretation and Study methods	3	UCC110	Foundations of Life and Mission	3	UCC122	Introduction to Psychology	3
UCC112	Library Research and Information Competency	3	UCC115	Comparative Study of Religions	3	BS204	Poetic and Wisdom Lit.	3
UCC114	Essentials of ICT	3	UCC116	Communication Skills (formerly UCC116)	3	GES321	Research Methods	3
BSS102	Pentateuch	3	BBS103	Historical Books	3	GES408	Introduction to Ethics	3
EDU101	Christian Educational Ministries in the Local Church	3	PAS103	Preaching Skills	3	CHS201	Church History: Pentecost to Reformation	3
THE201	Theology of God	3	THE202	Theology of Humanity & Sin	3			
		18			18			15

Year Two (48 Hrs)

Code	Semester 1 (Sept.)	Hrs.	Code	Semester 2 (Jan.)	Hrs	Code	Semester 3 (May)	Hrs
UCC222	Introduction to Sociology	3	UCC211	Intro. To Philosophy	3	BSS308	Acts of the Apostles	3
BSS205	Major Prophets	3	UCC221	Environment, Development and Stewardship	3	CHS303	Survey of the History of African Christianity	3
CHS302	Church History: Reformation to the Present	3	BSS307	The Gospels	3	PAS303	Ministry Practicum	3
PAS206	Pastoral Theology	3	PAS205	Marriage and Family	3	PAS307	Pastoral Counselling	3
THE203	Theology of the Person & Work of Christ	3	THE304	Theology of the Holy Spirit	3	THE306	Christian Theology in Africa	3
		15			15			15

Year 3 (30 hours)

Code	Semester 1 (Sept.)	Hrs.	Code	Semester 2 (Jan.)	Hrs.
BSS409	Paul's Letters to the Romans and Galatians	3	BSS412	The Book of Hebrews	3
BBS408	Peter's Letters	3	MSS404	African Traditional Societies and Christianity	3
MSS302	Cross- cultural communication	3	PAS410	A Strategy for Church Growth	3
PAS409	Guidelines for Leadership	3	PAS412	Expository Preaching	3
THE305	Theology of the Church & End Times	3		<i>Elective</i>	3
THE407	Apologetics	3			
		18			15

UNDERGRADUATE DIPLOMA COURSES

a). Diploma in Theology (DTH)

YEAR 1				(51 Credit Hrs.)					
Semester 1 (September)				Semester 2 (January)				Semester 3 (May)	
Course	Title	Hrs	Code	Title	Hrs	Code	Title	Hrs	
DUC112	Library Research and Information Competency	3	DUC126	Communication Skills (formerly College English)	3	DTH112	Introduction to Ethics	3	
DUC113	Essentials of ICT	3	DUC123	Comparative Study of Religion	3	DTH210	Pastoral Counselling	3	
DUC125	Bible Interpretation and Study methods	3	DUC124	Foundations for life and Mission	3	DTH211	Worship of God	3	
DBS111	Bible Survey-OT	3	DTH121	Preaching Skills	3	DTH212	Church History Survey	3	
DTH111	Theology Survey 1	3	DTH221	African Traditional Societies & Christianity	3	DTH225	Evangelism & Discipleship	3	
			DTH222	Marriage & Family	3	DBS122	Bible Survey-NT	3	
	Total of Semester	15			18			18	

YEAR 2		
Year Two (15 Credit Hrs)		
Semester 1 (September)		
Code	Title	Hrs
DED220	Christian Education Ministries in the Church	3
DTH122	Theology Survey 2	3
DTH213	Guidelines for Leadership	3
DTH223	Apologetics	3
DTH224	Pastoral Theology	3
	Total for Semester	15

b). Diploma in Wholistic Ministry

YEAR 1				(51 Credit Hrs.)					
Semester 1 (September)				Semester 2 (January)				Semester 3 (May)	
Course	Title	Hrs	Code	Title	Hrs	Code	Title	Hrs	
DUC112	Library Research and Information Competency	3	DUC126	Communication Skills (formerly College English)	3	DCD227	Internship	3	
DUC113	Computer Systems and Information Technology	3	DUC123	Comparative Study of Religion	3	DTH210	Pastoral Counselling	3	
DUC125	Bible Interpretation and Study methods	3	DUC124	Foundations for life and Mission	3	DTH211	Worship of God	3	
DBS111	Bible Survey-OT	3	DTH121	Preaching Skills	3	DTH212	Church History Survey	3	
DTH111	Theology Survey 1	3	ENT021	Foundations for Entrepreneurship	3	DTH225	Evangelism & Discipleship	3	
			DTH222	Marriage & Family	3	DBS122	Bible Survey-NT	3	
Total of Semester		15			18			18	

YEAR 2		
Year Two (15 Credit Hrs)		
Semester 1 (September)		
Code	Title	Hrs
DED220	Christian Education Ministries in the Church	3
DTH122	Theology Survey 2	3
DTH213	Guidelines for Leadership	3
DTH223	Apologetics	3
DWD215	Project	3
Total for Semester		15

c). Diploma in Mission Studies – General

YEAR 1

Semester 1			Semester 2		
Code	Course Title	Crs	Code	Course Title	Crs
DBS111	O.T Bible Survey	3	DBS122	New Testament Survey	3
DMS111	B/ F. for Missions	3	DUC123	Comparative Study of Religions	3
DMS115	Introduction to Islam	3	DUC124	F/FOR Life and Mission	3
DUC112	Library Science and Info. Competency	3	DUC126	Communication Skills	3
DUC113	Essentials of Information Communication Technology	3	DMS122	Cultural Anthropology & L/Learning	3
DMS113	Personal Development	3	DMS124	The Gospel within Context	3
	CREDIT HOURS	18		CREDIT HOURS	18
YEAR 2					
Semester 1			Semester 2		
Code	Course Title	Crs	Code	Course	Crs
DMS211	Resource Mobilization	3	DMS222	Evangelism, Church Planting & Forming Missional Com.	3
DTH223	Christian Apologetics	3	DMS224	Transformational and Com. Devt.	3
DMS213	Missional and Leadership Development	3	DMS226	Missionary Care	3
DUC125	Biblical Interpretation	3	DMS227	Christians and other religions living together	3
DMS215	Encountering spiritual powers	3	DMS228	Children ministry	3
		15			15

Diploma in Mission Studies – Islamic

YEAR 1					
Semester 1			Semester 2		
Code	Course Title	Crs	Code	Course Title	Crs
DBS111	O.T Bible Survey	3	DBS122	New Testament Survey	3
DMS111	B/ F. for Missions	3	DMSI124	Understanding the Qur'an	3
DMS115	Islam in Africa and Islamic resurgence Worldwide	3	DUC124	Foundations of Life and Mission	3
DUC112	Library Science and Information Competency	3	DUC126	Communication Skills	3

DUC113	Essentials of Information Communication Technology	3	DMS122	Cultural Anthropology & L/Learning	3
DMS113	Personal Development	3	DMSI126	Popular Islam	3
CREDIT HOURS		18	CREDIT HOURS		18
YEAR 2					
Semester 1			Semester 2		
Code	Course Title	Crs	Code	Course	Crs
DMS211	Resource Mobilization	3	DMS222	Evangelism, Church Planting & Forming Missional Com.	3
DMSI211	Christian Response to Islam	3	DMS 224	Transformational Com. Devt.	3
DMS213	Missional and Leadership Development	3	DMS 226	Missionary Care	3
DUC125	Bible Interpretation	3	DMSI222	Christians Relations with Muslims in History.	3
DMSI215	Confronting Islamic spiritual powers	3	DMSI223	Introduction to Arabic	3
		15			15

UNDERGRADUATE CERTIFICATE COURSES

Certificate in Theology

	Semester 1 (September)				Semester 2 (January)		
Course	Title	Hrs	Code	Title	Hrs		
DUC113	Computer Systems and Information Technology	3	DUC126	Communication Skills (formerly College English)	3		
DUC125	Bible Interpretation and Study methods	3	BAF022	Life Skills	3		
DBS111	Bible Survey-OT	3	DUC124	Foundations for life and Mission	3		
DTH223	Apologetics	3	ENT021	Foundations for Entrepreneurship	3		
DED220	Christian Education Ministries in the Church	3	DTH225	Evangelism & Discipleship	3		
GES321	Research Methods		DBS122	Bible Survey-NT	3		
	Total of Semester	18					18

Certificate in Healthy Church

Semester 1			Semester 2		
Code	Title	Hrs	Code	Title	Hrs
CHC001	Journey Through the Old Testament	3	CHC121	Managing a Healthy Church	3
CHC002	Journey Through the New Testament	3	CHC122	Leadership in a Healthy Church	3
CHC003	The Study of God and His Attributes	3	CHC123	Human Resource Management	3
CHC004	The study of Christ	3	CHC124	Church Discipline	3
CHC005	The study of the holy Spirit	3	CHC125	History of Christian Mission	3
		15	CHC126	Practicum	3
					18

Certificate in Mission Studies

Semester 1			Semester 2		
Code	Course Title	Crs	Code	Course Title	Crs

MSS	Old Testament Bible Survey	3	MSS	New Testament Survey	3
MSS	Biblical Foundations for Missions	3	MSS	Church Planting & Forming Missional Com.	3
MSS	Introduction to Islam	3	MSS OR	Missionary Care OR	3
MSS	Encountering Spiritual Powers	3	MSS	Children Ministry in Missions	3
MSS	Resource Mobilization	3	MSS	Culture and Language Learning	3
MSS	Personal Development	3	MSS	The Gospel within Context/ Evangelism and discipleship	3
	CREDIT HOURS	18		CREDIT HOURS	15

34.2 SCHOOL OF BUSINESS AND ECONOMICS (SBE)

DOCTORATE COURSES (TEMPLATES)

a) Doctor of Philosophy in Business Administration and Management (PBAM)

Year 1

Code	Semester One	Hrs	Code	Semester Two	Hrs
BAM 811	Corporate Governance and Sustainability	3	BAM 815	Advanced Research Methods	3
BAM 812	Statistics for Management Research	3	BAM 816	Quantitative and Qualitative Analysis	3
BAM 813	Change and Crisis Management	3	BAM 817	Managerial Economics	3
BAM 814	Financial management	3	BAM 818	Negotiation/Deal Making	3
		12			12

Year 2

Finance specialization courses

Code	Year Two Semester One	Hrs	Code	Year Two Semester Two	Hrs
PBF821	Applied Corporate Finance	3	BAM824	Comprehensive Examination	P/F
PBF822	International Finance Management	3	BAM825-1	Applied Research Dissertation	12
PBF823	Contemporary Issues in Investment analysis and Portfolio Management	3			
PBF 824	Finance Seminar	3			
		12			12

Year 3

Code	Year Three Semester One	Hrs	Code	Year Three Semester Two	Hrs
BAM825-2	Applied Research Dissertation	12	BAM825-3	Applied Research Dissertation	12
		12			12

Year 2

Leadership Development Specialization Courses

Code	Year Two Semester One	Hrs	Code	Year Two Semester Two	Hrs
PBL 821	Corporate Leadership	3	BAM824	Comprehensive Examination	P/F
PBL 822	Advanced Leadership Theories	3	BAM825-1	Applied Research Dissertation	12
PBL823	Philosophy and Paradigms of Leadership	3			
PBL 824	Seminar in Leadership	3			
		12			12

Year 3

Code	Year Three Semester One	Hrs	Code	Year Three Semester Two	Hrs
BAM825-2	Applied Research Dissertation	12	BAM825-3	Applied Research Dissertation	12
		12			12

Year 2

Strategy and Development Specialization Courses

Code	Year Two Semester One	Hrs	Code	Year Two Semester Two	Hrs
PBS 821	Global Strategic Management	3	PBAM 824	Comprehensive Examination	P/F
PBS 822	Corporate Globalization	3	BAM825-1	Applied Research Dissertation	12
PBS 823	Strategic Thinking	3			
PBS 824	Seminar in Strategy and Competitive Advantage	3			
		12			12

Year 3

Code	Year Three Semester One	Hrs	Code	Year Three Semester Two	Hrs
BAM825-2	Applied Research Dissertation	12	BAM825-3	Applied Research Dissertation	12
		12			12

b). Doctor of Philosophy in Leadership and Governance

Year 1

Core Leadership and Governance Foundational Courses

Code	Semester One	Hrs	Code	Semester Two	Hrs
	Orientation				
PLG 811	History, Philosophy & Paradigms of Leadership and Governance	3	PLG 815	Conflict Transformation and Peace Building Competencies	3
PLG 812	Theories of Leadership	3	PLG 816	Global Perspectives on Leadership and Governance	3
PLG 813	Advanced Strategic Leadership and Governance	3	PLG 817	Research Design and Methods	3
PLG 814	Leading Change and Change Management	3			
PLG 819	Statistical Research Design For Leadership	P/F	PLG 818	Quantitative and Qualitative Techniques	3
		P/F	PLG 820	Comprehensive Exams	
		12			12

Year 2

Corporate Governance and Leadership Specialization

Code	Year Two Semester One	Hrs	Code	Year Two Semester Two	Hrs
PGL 821	Organizational Culture and Leadership	3	PLG 820	Comprehensive Examination	P/F
PGL 822	Public Sector, Legal and Regulatory Framework of Corporate Governance	3	PLG 821	Research Dissertation Proposal	
PGL 823	Leadership, Values, Ethics and Public Sector Governance	3			
PGL 824	Global and Local Corporate Governance	3			
PGL 825	Leadership Principles and Practices of Corporate Governance	3			
	Total	15			

Year 3

Code	Year Three Semester One	Hrs	Code	Year three Semester Two	Hrs
PLG 822	Dissertation Writing & Final Defense	21	PLG 822	Dissertation Writing & Final Defense	
	Total	21			

Year 2

Public Governance Specialization

Code	Year Two Semester One	Hrs	Code	Year Two Semester Two	Hrs
PPG 821	Principles of Leadership and Dynamics in the Public Sector	3	PLG 820	Comprehensive Examination	F/P
PPG 822	Governance and Accountability in Public Institutions and Entities	3	PLG 821	Research Dissertation Proposal	
PPG 823	Government Structures and Management Practices	3			
PPG 824	Public Policy Analysis and Formulation	3			
PPG 825/ PGL 822	Public Sector, Legal and Regulatory Framework	3			
	Total	15			

Year 3

Code	Year Three Semester One	Hrs	Code	Year three Semester Two	Hrs
PLG 822	Dissertation Writing & Final Defense	21	PLG 822	Dissertation Writing & Final Defense	
	Total	21			

Year 2

Leadership Psychology Specialization

Code	Year Two Semester One	Hrs	Code	Year Two Semester Two	Hrs
PLP 821	Organizational Development and Change	3	PLG 820	Comprehensive Examination	F/P
PLP 822	Survey Design and Analysis in Organizational Psychology	3	PLG 821	Research Dissertation Proposal	
PLP 823	Psychology of Servant and Authentic Leadership	3			
PLP 824	Psychology of Organizational Development and Change	3			
PLP 825	The Psychology of Leadership and Followership	3			
	Total	15			

Year 3

Code	Year Three Semester One	Hrs	Code	Year three Semester Two	Hrs
PLG 822	Dissertation Writing & Final Defense	21	PLG 822	Dissertation Writing & Final Defense	
	Total	21			

Civic Leadership

Code	Year Two Semester One	Hrs	Code	Year Two Semester Two	Hrs
PCL 821	Political, Civic and community Engagement	3	PLG 820	Comprehensive Examination	F/P
PCL 822	Essentials of Non-profit and Civic Leadership-	3	PLG 821	Research Dissertation Proposal	
PCL 823	Oversight for Non-profit and Civic Organizations	3			
PCL 824	Public Policy Analysis and Formulation	3			
PCL 825	Civic Leadership Philanthropy	3			
	Total	15			

Year 3

Code	Year Three Semester One	Hrs	Code	Year three Semester Two	Hrs
PLG 822	Dissertation Writing & Final Defense	21	PLG 822	Dissertation Writing & Final Defense	
	Total	21			

Statesmanship and Political Leadership

Code	Year Two Semester One	Hrs	Code	Year Two Semester Two	Hrs
PSL 821	Politics, Constitutionalism and Governance	3	PLG 820	Comprehensive Examination	F/P
PSL 822	Political Economy of National & Devolved Government -	3	PLG 821	Research Dissertation Proposal	3
PSL 823	Comparative Administrative System	3			
PSL 824	Institutional Ethical Leadership and Governance	3			
PSL 825	Politics of Natural Resource Extraction	3			
	Total	15			

Year 3

Code	Year Three Semester One	Hrs	Code	Year three Semester Two	Hrs
PLG 822	Dissertation Writing & Final Defense	21	PLG 822	Dissertation Writing & Final Defense	
	Total	21			

Religious Sector Leadership and Governance

Code	Year Two Semester One	Hrs	Code	Year Two Semester Two	Hrs
PRS 821	Faith based Organizational Leadership and Administration	3	PLG 820	Comprehensive Examination	F/P
PRS 822	PRS 822 Financial Management for Non-Profit Organizations	3	PLG 821	Research Dissertation Proposal	12
PRS 823	Management and Governance of faith based organization	3			
PRS 824	The Charismatic and the Transformational Leader	3			
PRS 825	Coaching in Leading and Managing Faith Based Organizations	3			
	Total	15			

Year 3

Code	Year Three Semester One	Hrs	Code	Year three Semester Two	Hrs
PLG 822	Dissertation Writing & Final Defense	21	PLG 822	Dissertation Writing & Final Defense	
	Total	21			

SBE POST-GRADUATE MASTERS COURSES

a) Master of Business Administration (MBA)

Year 1 Semester 1			Year 1 Semester 2		
Code	Title	Hrs	Code	Title	Hrs
MGT511	Organization Theory & behaviour	3	THE605	Christian and Professional Ethics	3
HRM511	Principles of Human Resource Management	3	MSS605	Leadership Development	3
ACC511	Financial accounting	3	MAQ521	Applied Statistical Methods	3
LGV511	Ethics & Corporate Governance	3	FIN511	Integrity and Financial Management	3
PAS500	Foundation for Life and Mission	3	STM521	Strategic Management	

Year 2 Semester 1			Year 2 Semester 2		
Finance specialization courses			Code	Title	Hrs
Code	Title	Hrs	RTH621	Thesis	9
FIN611	Global Finance	3			
FIN612	Finance integration seminar	3			
FIN613	Investment analysis and portfolio management	3			
MGT611	Global Business Management & Leadership in a Multicultural Environment	3			
RSM611	Applied Research Methods	3			

Human Resources specialization courses			Year 2 Semester 2		
Code	Title	Hrs	Code	Title	Hrs
HRM611	Advanced Strategic Human Resources management	3	RTH621	Thesis	9
HRM612	Global Human Resources Management	3			
HRM613	Human Resources integration seminar	3			
MGT611	Global Business Management & Leadership in a Multicultural Environment	3			
RSM611	Applied Research Methods	3			

Strategic Management specialization courses			Year 2 Semester 2		
Code	Title	Hrs	Code	Title	Hrs
STM611	Advanced Strategic management	3	RTH621	Thesis	9
STM612	Global strategic management	3			
STM613	Strategic management Integration seminar	3			
MGT611	Global Business Management & Leadership in a Multicultural Environment	3			
RSM611	Applied Research Methods	3			

Entrepreneurship specialization courses			Year 2 Semester 2		
Code	Title	Hrs	Code	Title	Hrs
ENT611	Entrepreneurship Concepts	3	RTH621	Thesis	9
ENT612	Entrepreneurship and Leadership	3			
ENT613	Entrepreneurship integration Seminar	3			
MGT611	Global Business Management & Leadership in a Multicultural Environment	3			
RSM611	Applied Research Methods	3			

Marketing Management specialization courses			Year 2 Semester 2		
Code	Title	Hrs	Code	Title	Hrs
MKT611	Advanced Strategic marketing management	3	RTH621	Thesis	9
MKT612	Global marketing Management	3			
MKT613	Marketing integration seminar	3			
MGT611	Global Business Management & Leadership in a Multicultural Environment	3			
RSM611	Applied Research Methods	3			

b). Master of Arts in Organizational Leadership (MAOL)

Year 1 Semester 1			Year 1 Semester 2		
Code	Title	Hrs	Code	Title	Hrs
MGT511	Organization Theory & Behaviour	3	THE605	Christian & Professional Ethics	3
MLD511	Leadership theories and practice	3	MSS605	Leadership Development	3
MLD512	Development and Social Change	3	MAQ521	Applied Statistical Methods	3
LGV511	Ethics & Corporate Governance	3	FIN511	Integrity and Financial Management	3
PAS500	Foundations for Life & Mission	3	STM521	Strategic Management	3

Year 2 Semester 1			Year 2 Semester 2		
Code	Title	Hrs	Code	Title	Hrs
ENT612	Entrepreneurship and Leadership	3	RTH621	Thesis	9
MLD611	Funding for Non-Profit Making Organizations	3			
MGT612	Conflict Management and Resolution	3			
MLD613	Leadership and gender issues	3			
RSM611	Applied Research Methods	3			

c). Master of Public Policy Administration (MPPA)

Year 1 Semester 1			Year 1 Semester 2		
Code	Title	Hrs	Code	Title	Hrs
MPA512	Public sector management	3	THE605	Christian and Professional Ethics	3
MPA513	Public sector labor and employment law	3	MSS605	Leadership Development	3
MPA521	Institution political dynamics & Public Policy	3	MAQ521	Applied Statistical Methods	3
LGV511	Ethics & Corporate Governance	3	MPA523	Finance and budgeting for Public Sector	3
PAS500	Foundations for Life and Mission	3	STM521	Strategic Management	3

Year 2 Semester 1			Year 2 Semester 2		
Code	Title	Hrs	Code	Title	Hrs
MPA531	Theory and Practice of Public Policy	3	RTH621	Thesis	9
MPA532	Public policy analysis	3			
MPA533	Public Policy and administration seminar	3			
MPA524	Public Procurement law and Asset Disposal	3			
RSM611	Applied Research Methods	3			

SBE UNDERGRADUATE BACHELORS COURSES

a). Bachelor of Accountancy and Financial Management (BAFM)

Year 1 Semester 1			Year 1 Semester 2		
Code	Title	Hrs	Code	Title	Hrs
ACC111	Financial Accounting I	3	ACC121	Financial Accounting II	3
ECO111	Principles of Microeconomics	3	BAF121	Communication skills	3
MAQ111	Business Statistics	3	BAF125	Life Skills	3
MGT111	Principles of Management	3	ECO121	Principles of Macroeconomics	3
UCC111	Bible Interpretation and Study Methods	3	ENT121	Foundations of Entrepreneurship	3
UCC112	Library Research and Information Competency	3	MAQ121	Introduction to Mathematics of Finance	3
UCC114	Essentials of Information and Communications Technology	3	UCC110	Foundations for Life and Mission	3
		21	UCC115	Comparative Study of Religions	3
					24

Year 2 Semester 1			Year 2 Semester 2		
Code	Title	Hrs	Code	Title	Hrs
ACC211	Intermediate Financial Accounting I	3	ACC221	Intermediate Financial Accounting II	3
ACC212	Cost Accounting	3	ACC222	Managerial Accounting	3
FIN211	Business Finance	3	ACC223	Auditing Assurance & Services	3
FIN212	Introduction to Taxation	3	HRM221	Human Resource Management	3
FIN213	Money and Banking Theory	3	LAW221	Business Law and Governance	3
UCC122	Introduction to Psychology	3	MKT221	Principles of marketing	3
UCC222	Introduction to Sociology	3	UCC211	Introduction to Philosophy	3
		21	UCC221	Environment, Development & Stewardship	3
					24

Year 3 Semester 1			Year 3 Semester 2		
Code	Title	Hrs	Code	Title	Hrs
ACC311	Forensic Accounting & Fraud	3	ACC321	Contemporary and Governmental Accounting	3
FIN311	Financial Management	3	BAF320	Industrial Attachment	3
FIN312	Financial Institution & Markets	3	FIN321	Risk Management and Financial Derivatives	3
FIN313	Development Finance	3	FIN322	Financial Information System	3
FIN314	Investment Analysis	3	FIN323	Personal Finance & Wealth Management	3
GES321	Research Methods	3	FIN324	Treasury Management	3
MAQ311	Quantitative Techniques & Methods	3	FIN325	International Finance	3
		21			21

Year 4 Semester 1			Year 4 Semester 2		
Code	Title	Hrs	Code	Title	Hrs
BAF410	Research Project	3	ACC421	Accounting Information Systems	3
FIN411	Advanced Financial Management	3	FIN421	Public Finance & Fiscal Policy	3
FIN412	Financial Accounting Theory	3	FIN422	Financial Reporting and Analysis	3
FIN413	Introduction to Financial Econometrics	3	FIN423	Real Estate Finance	3
FIN415	Corporate Finance	3	MGT422	Corporate Governance & Accountability	3
		15			15

b). Bachelor of Business Administration (BBA)

Year 1 Semester 1			Year 1 Semester 2		
Code	Title	Hrs	Code	Title	Hrs
ACC111	Financial Accounting I	3	ACC121	Financial Accounting II	3
ECO111	Principles of Microeconomics	3	BAF121	Communication skills	3
MAQ111	Business Statistics	3	BAF125	Life Skills	3
MGT111	Principles of Management	3	ECO121	Principles of Macroeconomics	3
UCC111	Bible Interpretation and Study Methods	3	ENT121	Foundations of Entrepreneurship	3
UCC112	Library Research and Information Competency	3	UCC110	Foundations for life and mission	3
UCC114	Essentials of Information and Communications Technology	3	UCC115	Comparative study of religions	3
		21			21

Year 2 Semester 1			Year 2 Semester 2		
Code	Title	Hrs	Code	Title	Hrs
ACC212	Cost Accounting	3	ACC223	Auditing Assurance & Services	3
FIN211	Business Finance	3	HRM221	Human Resource Management	3
FIN212	Introduction to Taxation	3	LAW221	Business Law and Governance	3
FIN213	Money and Banking Theory	3	MKT221	Principles of Marketing	3
MGT211	Introduction to Business Organizations	3	UCC211	Introduction to philosophy	3
UCC122	Introduction to Psychology	3	UCC221	Environmental, Development and Stewardship	3
UCC222	Introduction to Sociology	3			18
		21			

Year 3 Semester 1			Year 3 Semester 2		
Code	Title	Hrs	Code	Title	Hrs
ENT311	Business Planning and Presentation	3	BAF320	Industrial Attachment	3
MAQ311	Quantitative Techniques & Methods	3	MGT321	Business Ethics and Integrity	3
GES321	Research Methods	3	MGT322	Organizational Theory & Behaviour	3
FIN311	Financial Management	3	FIN321	Risk Management and Financial Derivatives	3
FIN312	Financial Institution & Markets	3	FIN325	International Finance	3
HRM311	Corporate Culture	3	HRM321	Employee Relations	3
HRM312	Reward and Performance Management	3	HRM322	Industrial Relations	3
HRM313	Working Environment	3	MIS321	Management Information System	3
MKT311	Marketing Management	3	MKT321	Marketing Communication and Promotion Management	3
MKT312	Consumer Behaviour	3	MKT322	Sales Management	3
MKT313	Marketing Research	3	PSM321	International Purchasing	3
PSM311	Principles of Purchasing and Supplies Management	3			
PSM312	Procurement and Supply Chain (Theory & Practice)	3			
PSM313	Inventory Management	3			

Year 4 Semester 1			Year 4 Semester 2		
Code	Title	Hrs	Code	Title	Hrs
BAF410	Research Project	3	FIN424	Financial Statement Analysis	3
FIN414	Investment Banking	3	FIN425	Credit Management Practices	3
FIN415	Corporate Finance	3	FIN426	Law and Practices of Banking	3
HRM411	Strategic Human Resource Management	3	HRM421	Human Resource Information Systems	3
HRM412	Risk Management	3	HRM422	Labour Economics	3
LAW411	Company Law	3	MGT421	Strategic Management	3
MGT411	Productions and Operations Management	3	MKT421	International Marketing	3
MGT412	International Business Management	3	PSM421	Strategic Procurement and Logistics Management	3
MKT411	Services Marketing	3	PSM422	Warehousing Operations and Stock Control	3

MKT412	Strategic Marketing	3		
PSM411	Public Procurement and Finance	3		
PSM412	Procurement in Project and Contract management	3		

c). Bachelor of Science in Entrepreneurship (BSENT)

Year 1 Semester 1			Year 1 Semester 2		
Code	Title	Hrs	Code	Title	Hrs
ACC111	Financial Accounting I	3	ACC121	Financial Accounting II	3
ECO111	Principles of Microeconomics	3	BAF121	Communication skills	3
MAQ111	Business Statistics	3	BAF125	Life Skills	3
MGT111	Principles of Management	3	ECO121	Principles of Macroeconomics	3
UCC111	Bible Interpretation and study methods	3	ENT121	Foundations of Entrepreneurship	3
UCC112	Library Research and information competency	3	UCC110	Foundations for Life and Mission	3
UCC114	Essentials of Information and Communications Technology	3	UCC115	Comparative Study of Religions	3
		21			21

Year 2 Semester 1			Year 2 Semester 2		
Code	Title	Hrs	Code	Title	Hrs
ACC212	Cost Accounting	3	ENT221	Entrepreneurial Competencies	3
ENT211	Entrepreneurship II	3	ENT222	Entrepreneurial Venture Creation and business start up	3
FIN212	Introduction to Taxation	3	HRM221	Human Resource Management	3
FIN213	Money and Banking Theory	3	LAW221	Business Law and Governance	3
UCC122	Introduction to Psychology	3	MKT221	Principles of Marketing	3
UCC222	Introduction to Sociology	3	UCC211	Introduction to Philosophy	3
		18	UCC221	Environment Development and Stewardship	3
					21

Year 3 Semester 1			Year 3 Semester 2		
Code	Title	Hrs	Code	Title	Hrs
ENT311	Business Planning and Presentation	3	BAF320	Industrial Attachment	3
ENT312	Marketing Strategies in Small Enterprises	3	ENT321	Enterprise Environment	3
ENT313	Managing Enterprise Growth	3	ENT322	Value Chain in Small Enterprise	3
ENT314	Technology and Innovation in Small Enterprises	3	ENT323	Globalization and Internationalization of Small Businesses	3
FIN311	Financial Management	3	HRM322	Industrial Relations	3
GES321	Research Methods	3	MGT321	Business Ethics and Integrity	3
MAQ311	Quantitative Techniques & Methods	3			18
		21			

Year 4 Semester 1			Year 4 Semester 2		
Code	Title	Hrs	Code	Title	Hrs
BAF410	Research Project	3	ENT421	Electronic Commerce	3
ENT411	Consulting and Counselling in Small Enterprises	3	ENT422	Family Enterprise and Succession Management	3
ENT412	Conflict Management in Small Enterprises	3	ENT423	Social Entrepreneurship	3
LAW411	Company Law	3	ENT424	Entrepreneurial Finance	3
MGT411	Production and Operations Management in small businesses	3	MGT421	Strategic Management	3
		15			15

d). Bachelor of Science in Information Technology (BSIT)

Year 1 semester 1			Year 1 semester 2		
Code	Title	Hrs	Code	Title	Hrs
UCC111	Bible Interpretation and Study Methods	3	UCC116	Communication Skills	3
UCC112	Library Research and Information Competency	3	UCC122	Foundations for Life and Mission	3
BIT111	Discrete Mathematics	3	UC123	Comparative Study of Religions	3
BIT110	Introduction Information Technology	3	BIT121	Database Systems	3
BIT112	Internet Technologies	3	BIT122	Programming Fundamentals	3
BIT113	Computer Support and Maintenance	3	BIT123	System Analysis and Design	3
BIT114	Linear Algebra		BIT124	Computer Organization and Architecture	3
		21			21

Year 2 Semester 1			Year 2 Semester 2		
Code	Title	Hrs	Code	Title	Hrs
UCC211	Introduction to Sociology	3	UCC221	Environment, Development and Stewardship	3
UC212	Introduction to Psychology	3	UCC222	Introduction to Philosophy	3
BIT210	Probability and Statistics I	3	BIT221	Internet Programming	3
BIT211	Data Structures and Algorithms	3	BIT222	Calculus	3
BIT212	Network Configuration and Routing.	3	BIT223	Object Oriented Programming I	3
BIT213	Operating Systems	3	BIT224	Geographical Information Systems	3
BIT214	Information Systems Management	3	BIT225	Information Systems Project I	3
		21			21

Year 3 Semester 1			Year 3 Semester 2		
Code	Title	Hrs	Code	Title	Hrs
BIT310	Multimedia Systems	3	BIT320	E-Commerce	3
BIT311	Distributed Systems	3	BIT321	Research Methods	3
BIT312	Object Oriented Programming II	3	BIT322	ICT and Society	3
BIT313	Introduction to Artificial Intelligence	3	BIT323	Data Communication and Networks	3
BIT314	Probability and Statistics II	3	BIT324	Advanced Database Systems	3
BIT315	Computer Security and Cryptography	3	BIT325	IT Project Management	3
BIT316	Strategic Management Information Systems		BIT326	Entrepreneurship	3
		21			21

BIT440	Industrial Attachment	3
---------------	-----------------------	---

Specialization Courses in Management Information System:

Year 4 Semester 1			Year 4 Semester 2		
Code	Title	Hrs	Code	Title	Hrs
BIT410	Information Systems Project II	6	BIT410	Information Systems Project II	
BIT420	Databases and Distributed Systems Security	3	BIT421	Organizational Corporate Computer and Network Security	3
BIT412	Simulation and Modelling	3	BIT425	Data Warehousing and Mining	3
BIT413	Human Computer Interaction	3	BIT426	Enterprise Resource Planning Systems	3
BIT414	Software Quality Assurance	3	BIT427	Information Systems Security Management	3
BIT417	Management and Auditing of Information Systems	3			
		18			15

Specialization Courses in Software Engineering:

Year 4 Semester 1			Year 4 Semester 2		
Code	Title	Hrs	Code	Title	Hrs
BIT410	Information Systems Project II	3	BIT410	Information Systems Project II	3
BIT420	Databases and Distributed Systems Security	3	BIT421	Organizational Corporate Computer and Network Security	3
BIT412	Simulation and Modelling	3	BIT422	Mobile Application Programming	3
BIT413	Human Computer Interaction	3	BIT423	Software Testing	3
BIT414	Software Quality Assurance	3	BIT424	Software Economics and Management	3
BIT418	Software Requirements Engineering	3			
		18			15

Specialization Courses in Computer Networking:

Year 4 Semester 1			Year 4 Semester 2		
Code	Title	Hrs	Code	Title	Hrs
BIT410	Information Systems Project II	3	BIT410	Information Systems Project II	3
BIT420	Databases and Distributed Systems Security	3	BIT428	Network Design, Implementation & Management	3
BIT412	Simulation and Modelling	3	BIT429	Wireless Networks	3
BIT415	Network Operating System	3	BIT430	Network System Administration	3
BIT416	Wireless Network Technologies	3	BIT431	Broadband Networks	3
BIT419	Cryptography and Network Security	3			
		18			15

Specialization Courses in Cyber Security:

Year 4 Semester 1			Year 4 Semester 2		
Code	Title	Hrs	Code	Title	Hrs
BIT410	Information Systems Project II	3	BIT410	Information Systems Project II	3
BIT419	Cryptography and Network Security	3	BIT427	Information Systems Security Management	3
BIT432	Enterprise and Infrastructure Security	3	BIT436	Emerging Issues in Information & Cyber Security	3
BIT433	Digital Forensics and Investigations	3	BIT437	Security Audit and Assessments	3
BIT434	Business Continuity and Data Recovery Concepts	3	BIT438	Comprehensive Ethical Hacking	3
BIT435	Cloud and Virtualization Security	3			
		18			15

SBE UNDERGRADUATE DIPLOMA COURSES

a). Diploma in Information Technology (DIT)

Semester 1			Semester 2		
Code	Title	Hrs	Code	Title	Hrs
DIT111	Introduction to Information Technology	3	DIT121	Systems Analysis and Design	3
DIT112	Introduction to Programming.	3	DIT122	Object Oriented Programming	3
DIT113	Mathematics for Business Computing	3	DIT123	Discrete Mathematics	3
DUC124	Foundations for Life and Mission	3	DUC125	Bible Interpretation and Study Methods	3
DUC126	Communication Skills	3	DUC 112	Introduction to Library Research	3
		15			15

Semester 3			Semester 4		
Code	Title	Hrs	Code	Title	Hrs
DIT131	Database Systems	3	DIT141	Probability and Statistics	3
DIT132	Introduction to Computer Networks	3	DIT142	Introduction to Web Applications Development	3
DIT133	Data Structures and Algorithms	3	DIT143	Business Information Systems	3
DIT134	IT Project Management	3	DIT144	Information systems Project	3
DIT135	Life Skills	3	DIT145	ICT and Society	3
		15			15

b). Diploma in Business Management (DBM)

Semester 1			Semester 2		
Code	Title	Hrs	Code	Title	Hrs
ACC011	Financial Accounting I	3	BAF021	Communication Skills	3
DUC112	Library Research and Information Competency	3	BAF022	Life Skills	3
DUC113	Computer Systems and Information Technology	3	DUC124	Foundations of Life and Mission	3
DUC125	Bible Interpretation and Study Methods	3	ENT021	Foundations for Entrepreneurship	3
ECO011	Principles of Microeconomics	3	HRM011	Human Resource Management	3
MAQ011	Business Statistics	3	LAW021	Business Law & Governance	3
MGT011	Principles of Management	3	MKT021	Principles of Marketing	3
		21			21

Semester 3			Semester 4		
Code	Title	Hrs	Code	Title	Hrs
ACC021	Cost Accounting	3	BAF023	Research Project	3
FIN021	Financial Management	3	BAF024	Industrial Attachment	3
GES321	Research Methods	3			6
HRM023	Labour and Industrial relations	3			
MGT021	Production and Operations Management	3			
PSM021	Principles of Purchasing and Supplies Management	3			
		18			

c). Diploma in Human Resource Management (DHRM)

Semester 1			Semester 2		
Code	Title	Hrs	Code	Title	Hrs
ACC011	Financial Accounting I	3	BAF021	Communication Skills	3
DUC 112	Library Research and Information Competency	3	BAF022	Life Skills	3
DUC113	Computer Systems and Information Technology	3	DUC124	Foundations of Life and Mission	3
DUC125	Bible Interpretation and Study Methods	3	ENT021	Foundations for Entrepreneurship	3
ECO011	Principles of Microeconomics	3	HRM011	Human Resource Management	3
MAQ011	Business Statistics	3	LAW021	Business Law & Governance	3
MGT011	Principles of Management	3	MKT021	Principles of Marketing	3
		21			21

Semester 3			Semester 4		
Code	Title	Hrs	Code	Title	Hrs
GES321	Research Methods	3	BAF023	Research Project	3
HRM021	Employee Relations	3	BAF024	Industrial Attachment	3
HRM022	Human and Public Relations	3			6
HRM023	Labour Law and Industrial Relations	3			
HRM024	Human Resource Development and Reward Management	3			
HRM025	Labour Economics	3			
		18			

d). Diploma in Procurement Management (DPM)

Semester 1			Semester 2		
Code	Title	Hrs	Code	Title	Hrs
ACC011	Financial Accounting I	3	BAF021	Communication Skills	3
DUC 112	Library Research and Information Competency	3	BAF022	Life Skills	3
DUC113	Computer Systems and Information Technology	3	DUC124	Foundations of Life and Mission	3
DUC125	Bible Interpretation and Study Methods	3	ENT021	Foundations for Entrepreneurship	3
ECO011	Principles of Microeconomics	3	LAW021	Business Law & Governance	3
MAQ011	Business Statistics	3	MKT021	Principles of Marketing	3
MGT011	Principles of Management	3			18
		21			

Semester 3			Semester 4		
Code	Title	Hrs	Code	Title	Hrs
ACC021	Cost Accounting	3	BAF023	Research Project	3
GES321	Research Methods	3	BAF024	Industrial Attachment	3
MGT021	Production and Operations Management	3			6
PSM021	Principles of Purchasing and Supplies Management	3			
PSM022	Warehousing Operations and Stock Control	3			
PSM023	Public Procurement and Finance	3			
PSM024	International Purchasing	3			
		21			

e). Diploma in Investment Management

Semester 1			Semester 2		
Code	Title	Hrs	Code	Title	Hrs
ACC011	Financial Accounting I	3	BAF021	Communication Skills	3
DUC112	Library Research and Information Competency	3	BAF022	Life Skills	3
DUC113	Computer Systems and Information Technology	3	HRM012	Risk Management	3
DUC125	Bible Interpretation and Study Methods	3	DUC124	Foundations of Life and Mission	3
ECO011	Principles of Microeconomics	3	ENT021	Foundations for Entrepreneurship	3
MAQ011	Business Statistics	3	LAW021	Business Law & Governance	3
MGT011	Principles of Management	3	MKT021	Principles of Marketing	3
		21			21

Semester 3			Semester 4		
Code	Title	Hrs	Code	Title	Hrs
FIN023	Investment Environment	3	BAF023	Research Project	3
FIN021	Financial Management	3	BAF024	Industrial Attachment	3
FIN022	Introduction to Taxation	3			6
FIN024	Valuation & Analysis of Investment	3			
FIN025	Asset Management	3			
GES321	Research Methods	3			
		18			

f). Diploma in Entrepreneurship

Semester 1			Semester 2		
Code	Title	Hrs	Code	Title	Hrs
ACC011	Financial Accounting I	3	BAF021	Communication Skills	3
DUC112	Library Research and Information Competency	3	BAF022	Life Skills	3
DUC113	Computer Systems and Information Technology	3	DUC124	Foundations of Life and Mission	3
DUC125	Bible Interpretation and Study Methods	3	ENT021	Foundations for Entrepreneurship	3
ENT011	Business Start-up Procedures	3	HRM011	Human Resource Management	3
MGT011	Principles of Management	3	LAW021	Business Law & Governance	3
MAQ011	Business Statistics	3	MKT021	Principles of Marketing	3
		21			21

Semester 3			Semester 4		
Code	Title	Hrs	Code	Title	Hrs
MGT021	Production and Operations Management	3	BAF023	Research Project	3
FIN021	Financial Management	3	BAF024	Industrial Attachment	3
GES321	Research Methods	3			6
ENT022	Consultancy in SMEs	3			
ENT023	Fundamentals of Strategic Management	3			
ENT024	Business Planning and Presentation	3			
ENT025	Entrepreneurial Competencies	3			
		21			

g). Diploma in Disaster Management

Semester 1			Semester 2		
Code	Title	Hrs	Code	Title	Hrs
ACC011	Financial Accounting I	3	BAF021	Communication Skills	3
DUC112	Library Research and Information Competency	3	BAF022	Life Skills	3
DUC113	Computer Systems and Information Technology	3	DUC124	Foundations of Life and Mission	3
MAQ011	Business Statistics	3	ENT021	Foundations for Entrepreneurship	3
MGT011	Principles of Management	3	HRM012	Risk Management	3
DMG011	Introduction To Disaster Management	3	DMG021	Crisis And Emergency Management	3
DUC125	Bible Interpretation and Study Methods	3	DMG012	Disaster Preparedness and Response	3
		21			21

Semester 3			Semester 4		
Code	Title	Hrs	Code	Title	Hrs
DMG021	Resource Mobilization and Financing in Disaster Management	3	BAF023	Research Project	3
DMG022	First Aid in Disaster Management	3	BAF024	Industrial Attachment	3
DMG023	Disaster Emergency Information Management	3			6
DMG024	Sustainable Community Development Strategies	3			
DMG025	Legal issues in Disaster Management	3			
DMG026	Psychological Interventions in Disaster Management	3			
DMG027	Fire Disaster Management	3			
		21			

h). Diploma in Sales and Marketing

Semester 1			Semester 2		
Code	Title	Hrs	Code	Title	Hrs
ACC011	Financial Accounting I	3	BAF021	Communication Skills	3
DUC112	Library Research and Information Competency	3	BAF022	Life Skills	3
DUC113	Computer Systems and Information Technology	3	DUC124	Foundations of Life and Mission	3
DUC125	Bible Interpretation and Study Methods	3	ENT021	Foundations for Entrepreneurship	3
ECO011	Principles of Microeconomics	3	MKT021	Principles of Marketing	3
MAQ011	Business Statistics	3	MKT022	Public Relations	3
MGT011	Principles of Management	3	MKT023	Principles Practices Of Selling	3
		21			21

Semester 3			Semester 4		
Code	Title	Hrs	Code	Title	Hrs
MKT024	Marketing Management	3	BAF023	Research Project	3
MKT025	Marketing Planning and Control	3	BAF024	Industrial Attachment	3
MKT026	Sales Management	3			6
MKT027	Legal Aspects of Sales and Marketing	3			
MKT028	International Planning in Sales	3			
MKT029	Marketing Information and Research	3			
GES321	Research Methods	3			
		21			

i). Diploma in Health Systems Management

Semester 1			Semester 2		
Code	Title	Hrs	Code	Title	Hrs
DUC113	Computer Systems and Information Technology	3	HSM121	Occupational Health & Safety	3
BAF021	Communication Skills	3	HSM122	Accident and Emergency Response	3
DUC124	Foundations of Life and Mission	3	HSM123	Health Care Policy and Laws	3
DUC112	Library Research and Information Competency	3	HSM124	Human Resource for Health	3
HSM111	Introduction to Health Systems Management	3	HSM125	Health Supplies Management	3
HSM112	Leadership and Management	3	UCC221	Environment, development, and stewardship	3
HSM113	Hospital Administration and Management	3	HSM126	Finance for Non-Finance Managers	3
		21			21

Semester 3			Semester 4		
Code	Title	Hrs	Code	Title	Hrs
HSM211	Health Management Information System	3	HSM222	Project	3
HSM212	Project Management Fundamentals for Healthcare Systems	3	HSM221	Practicum	3
HSM213	Integrated Care and Health Systems	3			6
HSM214	Quality Management	3			
HSM215	Health Care Financing	3			
HSM216	Research Methods & Statistics	3			
		18			

34.3 SCHOOL OF EDUCATION, ARTS AND SOCIAL SCIENCES (SEAS)

DOCTORATE COURSES (TEMPLATES)

a). Doctor of Philosophy in Education (PHDED)

The Doctor of philosophy in education (PHDED) programme has four concentrations namely Child Development and Family Studies (CDFS), Church Education (ChEd), Curriculum and Instruction (C&I), and Education Leadership and Administration (L&A).

NOTE: all concentrations have a **Total** 42 Credit Hours

- Seminar phase (duration of 1 year), taken in residence and covering six seminars (2 critical thinking, 2 methods and 2 in concentration area) for a total of 18 semester credits. This phase is immediately followed by a qualifying exam that must be completed successfully to achieve candidacy.
- The Research phase takes 2 – 3 years duration (24 semester credits).

Doctor of Philosophy in Education: Child Development and Family Studies (CDFS)

Year	1 st Session Seminar/Topic	2 nd Session Seminar/Topic	3 rd Session Seminar/Topic
1 st	Core Seminars EDU801: Seminar on Taxonomy of Educational Objectives in Education (3cr) EDU871: Qualitative Research Methods (3cr)	Core Seminar EDU802: Curriculum Theorizing (3cr) Specialization Seminar EDU840: Seminar on Child Development and Family Studies (3cr)	Core Seminar EDU872: Statistical Methods (3cr) Specialization Seminar EDU841: Topics on Child Development and Family Studies (3cr)
2 nd	Qualifying Exam	EDU991: Dissertation Proposal (3cr)	EDU992: Dissertation (3cr)
3 rd	EDU993: Dissertation (3cr)	EDU994: Dissertation (3cr)	EDU995: Dissertation (3cr)
4 th	EDU996: Dissertation (3cr)	EDU997: Dissertation (3cr)	EDU998: Dissertation (3cr)

Doctor of Philosophy in Education- Church Education (ChEd)

Year	1st Session Seminar/Topic	2nd Session Seminar/Topic	3rd Session Seminar/Topic
1 st	Core Seminars EDU801: Seminar on Taxonomy of Educational Objectives in Education (3cr) EDU871: Qualitative Research Methods (3cr)	Core Seminar EDU802: Curriculum Theorizing (3cr) Specialization Seminar EDU810: Independent Seminar in Ministry Education (3cr)	Core Seminar EDU872: Statistical Methods (3cr) Specialization Seminar EDU811: Independent Study in Ministry Education (3cr)
2 nd	Qualifying Exam	EDU991: Dissertation Proposal (3cr)	EDU992: Dissertation (3cr)
3 rd	EDU993: Dissertation (3cr)	EDU994: Dissertation (3cr)	EDU995: Dissertation (3cr)
4 th	EDU996: Dissertation (3cr)	EDU997: Dissertation (3cr)	EDU998: Dissertation (3cr)

Doctor of Philosophy in Education- Curriculum and Instruction (C&I)

Year	1st Session Seminar/Topic	2nd Session Seminar/Topic	3rd Session Seminar/Topic
1 st	Core Seminars EDU801: Seminar on Taxonomy of Educational Objectives in Education (3cr) EDU871: Qualitative Research Methods (3cr)	Core Seminar EDU802: Curriculum Theorizing (3cr) Specialization Seminar EDU820: Seminar on Teaching in Higher Education (3cr)	Core Seminar EDU872: Statistical Methods (3cr) Specialization Seminar EDU821: Topics on Teaching in Higher Education (3cr)
2 nd	Qualifying Exam	EDU991: Dissertation Proposal (3cr)	EDU992: Dissertation (3cr)
3 rd	EDU993: Dissertation (3cr)	EDU994: Dissertation (3cr)	EDU995: Dissertation (3cr)
4 th	EDU996: Dissertation (3cr)	EDU997: Dissertation (3cr)	EDU998: Dissertation (3cr)

Doctor of Philosophy in Education- Education Leadership and Administration (L&A)

Year	1st Session Seminar/Topic	2nd Session Seminar/Topic	3rd Session Seminar/Topic
1 st	Core Seminars EDU801: Seminar on Taxonomy of Educational Objectives in Education (3cr) EDU871: Qualitative Research Methods (3cr)	Core Seminar EDU802: Curriculum Theorizing (3cr) Specialization Seminar EDU830: Seminar on Administration of Educational Programmes (3cr)	Core Seminar EDU872: Statistical Methods (3cr) Specialization Seminar EDU831: Topics on Administration of Educational Programmes (3cr)
2 nd	Qualifying Exam	EDU991: Dissertation Proposal (3cr)	EDU992: Dissertation (3cr)
3 rd	EDU993: Dissertation (3cr)	EDU994: Dissertation (3cr)	EDU995: Dissertation (3cr)
4 th	EDU996: Dissertation (3cr)	EDU997: Dissertation (3cr)	EDU998: Dissertation (3cr)

b). Doctor of Philosophy in Clinical Psychology
Each of the courses in 3 credit hrs

YEAR ONE		
SEMESTER I	SEMESTER II	SEMESTER III
PSY800 Mental Health, the Biblical Narrative and Theology (seminar) PSY 801 Clinical Research Methods PSY 802 Advanced Biological, Bases of Behavior	PSY 803 Affective and Cognitive Basis of Behavior PSY 813 Legal, and Ethical issues in Clinical Psychology PSY 804 Personality and Behavioural Assessments: Psychometrics Lab I	PSY 806 Cognitive and Neuropsychological Assessments. Psychometrics Lab II PSY 809 Lifespan Development PSY 812 Fundamentals of Clinical Interviewing & Psychotherapy PSY 805 Clinical Practicum1 (child & adolescent)
YEAR TWO		
SEMESTER I	SEMESTER II	SEMESTER III
PSY 807 Advanced Statistics in Psychology 1 PSY 814 Cognitive & Behavioral Approaches to Treatment PSY815 - Cross-cultural issues in clinical psychology	PSY 808 History and Systems of Psychology PSY 817 Psychodynamic Approaches to Treatment PSY 810 Advanced Statistics in Psychology 11	PSY 818 Existential –Humanistic Approaches to Treatment PSY 816 Clinical Practicum11Adults PSY 811 Supervision, Management, & Consultation PSY 910 Clinical Psychopharmacology OR PSY 911 Psychology of Ecology

YEAR THREE		
SEMESTER I	SEMESTER II	SEMESTER III
PSY 819 Clinical Applications PSY 900 Contemporary Topics in Psychological Research(seminar) PSY 912 Developmental Psychopathology OR PSY913 Adolescence psychopathology OR PSY 914 Adult Psychopathology PSY 902 Dissertation I: Proposal	PSY 901 Comprehensive Exams PSY 903 Professional Clinical Internship Oral defense	PROPOSAL DEFENSE
PSY 1000 Dissertation II: Final	ORAL DEFENSE	

c). Doctor of Philosophy in Translation Studied (PHDTS)

Core Seminars for the PhD in Translation Studies

LTS900	Research methods in Translation studies
LTL900	Research methods in linguistics
LTS901	Cognitive linguistic theories
LTS902	Advanced translation theory
LTS903	Dissertation Proposal writing
LTS910	Linguistic Corpus

Specialization Seminars

LTL904	Relevance Theory
LTL905	Cognitive Grammar
LTL906	Conceptual Blending Theory
LTL907	Construction Grammar
LTL908	Cognitive Semantics
LTL909	Conceptual Metaphor Theory
LTS991	Dissertation
LTL991	Dissertation

POST-GRADUATE MASTERS COURSES

a) Master of Education (MED)

The Master of Education (MED) programme has four concentrations namely Child Development and Family Studies (CDFS), Church Education (ChEd), Curriculum and Instruction (C&I), and Education Leadership and Administration (L&A).

NOTE:

***Practicum (Internship) to be taken in the preceding May- July Semester 3**

*The following courses are to be taken as prerequisites or at PGD level by students without education background OR full PGD program (recommended for those who intend to seek licensing with TSC)

Code	Course Title	Hrs	Code	Course Title	Hrs
EDU511	Historical & Philosophical Foundations	3	EDU524	Curriculum Studies	3
EDU513	Psychological Foundations	3	EDU522	Sociological Foundations	3
EDU612	Educational Administration	3			

Master of Education (Child Development and Family Studies)- MED (CDFS)

Semester 1			Semester 2		
Code	Course Title	HRS	Code	Course Title	HRS
PAS500	Foundations of Christian Life and Missions	3	EDU536	Family Studies	3
EDU512	Theological Foundations of Education	3	EDU616	Child Behavior Guidance & Counseling	3
EDU514	Biblical Theology of Children's Ministry	3	EDU637	Data Analysis Techniques	3
EDU526	Introduction to Child Development	3	EDU635	Min to Child at Risk	3
EDU630	Research Methods	3	EDU611	Subject Area Methods	3
		15			15
Semester 3			Semester 4		
Code	Course Title	HRS		Course Title	HRS
EDU631	Administration/Leadership Children Ministry	3	EDU772	Thesis	3
EDU__	Education Elective	3	MSS605	Leadership Development	3
	General Elective	3	THE605	Christian Ethics	3
EDU621	Practicum (Internship)*	3	PAS763	Senior Reflections	1
EDU771	Thesis	3			
		15			10

Master of Education (Church Education) MED (ChEd)

Semester 1			Semester 2		
Code	Course Title	HRS	Code	Course Title	HRS
PAS500	Foundations of Christian Life & Mission	3	EDU637	Data Analysis Techniques	3
EDU512	Theological Foundations of Education	3	EDU525	Educational Ministries	3
EDU515	Christian Nurture & Spiritual Formation	3	EDU632	Youth Ministry	3
BSS501	Hermeneutics	3	PAS603	Pastoral Care of the Family	3
EDU630	Research Methods	3	EDU611	Subject Area Methods	3
		15			15

Semester 3			Semester 4		
Code	Course Title	HRS		Course Title	HRS
BBT603	Biblical Theology	3	EDU772	Thesis	3
EDU__	Education Elective	3	THE605	Christian Ethics	3
	General Elective	3	MSS605	Leadership Development	3
EDU621	Practicum (Internship)*	3	PAS763	Senior Reflections	1
EDU771	Thesis	3			
		15			10

Master of Education (Curriculum and Instruction) MED(C&I)

Semester 1			Semester 2		
Code	Course Title	HRS	Code	Course Title	HRS
PAS500	Foundations of Christian Life & Mission	3	EDU521	Designs for Critical Thinking	3
EDU512	Theological Foundations of Education	3	EDU533	Instructional Technology	3
EDU523	Multimedia in Education	3	EDU637	Data Analysis Techniques	3
EDU613	Ethics in Education	3	EDU634	Educational Evaluation & Assessment	3
EDU630	Research Methods	3	EDU611	Subject Area Methods	3
		15			15

Semester 3			Semester 4		
Code	Course Title	HRS	Code	Course Title	HRS
EDU633	Adult Learning & Literacy	3	EDU772	Thesis	3
EDU__	Education Elective	3	THE605	Christian Ethics	3
	General Elective	3	MSS605	Leadership Development	3
EDU621	Practicum (Internship)*	3	PAS763	Senior Reflections	1
EDU771	Thesis	3			
		15			10

Master of Education (Educational Leadership and Administration) MED(L&A)

Semester 1			Semester 2		
Code	Course Title	HRS	Code	Course Title	HRS
PAS500	Foundations of Christian Life & Mission	3	EDU532	Human Resource for Ed Admin	3
EDU512	Theological Foundations of Education	3	EDU637	Data Analysis Techniques	3
EDU527	Theory & Practice of Education Leadership	3	EDU622	Technology for Ed Admin	3
EDU528	Legal Issues in Education	3	EDU636	Budget Forecasting & Fiscal Planning	3
EDU630	Research Methods	3	EDU611	Subject Area Methods	3
		15			15

Semester 1			Semester 2		
Code	Course Title	HRS	Code	Course Title	HRS
EDU614	Strategic Planning & Management Education Programme	3	EDU772	Thesis	3
EDU_	Education Elective	3	THE605	Christian Ethics	3
	General Elective	3	MSS605	Leadership Development	3
EDU621	Practicum (Internship)*	3	PAS763	Senior Reflections	1
EDU771	Thesis	3			
		15			10

b). Master of Arts in Counseling Psychology (MACP)

N.B.

Applicants without a background in Counseling Psychology in undergraduate are required to take 4 prerequisite undergraduate courses

Semester 1 (Sept)			Semester 2 (Jan)			Semester 3 (May)		
Code	Course Title	Crs	Code	Course Title	Crs	Code	Course Title	Crs
PSY500	Research Methods	3	PSY504	Psychological assessment	3	PSY602 OR	Introduction to Chemical dependency OR	3
PSY502	Theoretical approaches to Counselling	3	PSY506	Group and Multicultural Counselling	3	PSY605 OR	Theories marital and family issues OR	3
PAS500	Foundations of Christian Life & Mission	3	THE605	Christian Ethics	3	PSY608	Child and adolescent psychology OR	3
PSY503	Psychopathology	3	PSY509	Theories of Personality	3	PSY611	Models of trauma counseling	3
PSY508	Foundations, skills, and techniques in counseling	3	PSY602	Neuropsychopharmacology	3	PSY600	Legal, Professional and Ethical Issues in Counseling	3
	Total	15		Personal Therapy	0	MSS605	Leadership Development	3
				Total	15	PSY601	Statistics and Data analysis	3
						PSY603 OR	Assessment of addiction disorders OR	3
						PSY607 OR	Assessment in family and marital therapy OR	3
						PSY609 OR	Assessment in children and adolescents OR	3
						PSY613	Assessment of traumatic disorders	3
						Total		15

Semester 4 (Sept)		
Code	Course Title	Crs
PSY507/700	Thesis1 & 11	6
PSY617	Counselling Practicum	3
PSY604 OR	Techniques of addiction counseling OR	3
PSY606 OR	Techniques of family and marital counseling OR	3
PSY610 OR	Techniques of counselling children and adolescents OR	3
PSY612	Techniques of trauma counselling	3
	Total	12

c). Master of Arts in Translation Studies (MATS)

MATS (General Translation)

Students who have not had the equivalent of the following 4 courses at BA level may be required to take them in addition to the 16 courses required for the MA.

LTL500 Introduction to Language and Linguistics

LTL503 Introduction to Sociolinguistics

LTL501 Introduction to Morphology and Syntax

LTL502 Morphology and Syntax 2

Also recommended but not required is the following:m

LTL510 Introduction to Phonetics and Phonology

It is assumed that students taking MATS (General Translation) already have a pair of languages: one being the source language and the other being the target language.

Year 1 Semester 1			Year 1 Semester 2		
Code	Title	Hrs	Code	Title	Hrs
LTS531	Translation Principles 1	3	LTS532	Translation Principles 2	3
PAS500	Foundations for Life and Ministry	3	LTL504	Semantics and Pragmatics	3
LTS530	History of Translation	3	LTS631	Research Methods for Translation Studies	3
LTL642	Analysis of source language	3	LTL643	Analysis of target language	3
			LTT690	Thesis: Topic and concept paper	
Total		12	Total		12

Year 2 Semester 1			Year 2 Semester 2		
Code	Title	Hrs	Code	Title	Hrs
LTS636	Translation of narratives	3	LTS637	Translation of non-narratives prose	3
LTS633	Professional Ethics for Translators	3	MSS605	Leadership Development	3
LTS635	Electronic technology for translation	3	LTS630	Advanced Translation Theory	3
LTS639	Translation as a profession	3	LTL615	Advanced Discourse Analysis	3
LTT690	Thesis proposal defense	3	LTT690	Thesis examination and defense	3
Total		15	Total		15

MATS (Biblical Translation)

Students who have not had the equivalent of the following 4 courses at BA level may be required to take them in addition to the 16 courses required for the MA.

LTL500 Introduction to Language and Linguistics

LTL503 Introduction to Sociolinguistics

LTL501 Introduction to Morphology and Syntax

LTL502 Morphology and Syntax 2

Also recommended but not required is the following:

LTL510 Introduction to Phonetics and Phonology

Students who have not taken biblical languages; either Koine Greek or Ancient Hebrew at the undergraduate level, will be required to take 4 semesters of either Greek or Hebrew depending on their interest as part of their MA

Year 1 Semester 1			Year 1 Semester 2		
Code	Title	Hrs	Code	Title	Hrs
LTS531	Translation Principles 1	3	LTS532	Translation Principles 2	3
LTS631	Research Methods for Translation Studies	3	LTL504	Semantics and Pragmatics	3
LTS530	History of Bible Translation	3	LTL643	Advanced Discourse Analysis	3
LTL642	Analysis of source language	3	LTL643	Analysis of target language	3
	Biblical Language	3		Biblical language	3
			LTT690	Thesis: Topic and concept paper	
Total		15	Total		15

Year 2 Semester 1			Year 2 Semester 2		
Code	Title	Hrs	Code	Title	Hrs
LTS636	Translation of narratives	3	LTS637	Translation of non-narratives	3
LTS633	Professional Ethics for Translators	3	MSS605	Leadership Development	3
PAS500	Foundations for Life and Ministry	3	LTS630	Advanced Translation Theory	3
BSS501	Hermeneutics	3	BSS630	Cultural world of the Bible	3
	Biblical Language	3		Biblical Language	3
LTT690	Thesis proposal defense	3	LTT690	Thesis examination and defense	3
Total		18	Total		18

POSTGRADUATE DIPLOMA

Postgraduate Diploma in Education (PGDE)

Semester 1			Semester 2			Semester 3		
Code	Course Title	HRS	Code	Course Title	HRS	Code	Course Title	HRS
EDU 511	Historical and Philosophical Foundations	3	EDU 634	Educational Evaluation & Assessment	3	EDU 621	Practicum (Internship)	3
EDU 513	Psychological Foundations	3	EDU 611	Subject Area Methods	3	EDU 612	Educational Administration	3
EDU 630	Research Methods	3	EDU 524	Curriculum Studies	3	EDU522	Sociological Foundations of Education	3
EDU 613	Ethics in Education	3	EDU 637	Data Analysis Techniques	3			
EDU 638	Research Project	3	EDU 639	Research Project	3			
_____	Teaching Subject 1	3	_____	Teaching Subject 2	3			
		18			18			9
Total Credits			45					

***Practicum (Internship) to be taken in the preceding May- July Semester**

UNDERGRADUATE BACHELORS COURSES

a). Bachelor of Education (Secondary Teacher Education) – BED(STE)

Year 1, Semester 1			Year 1, Semester 2		
Code	Title	Hrs	Code	Title	Hrs
EDU110	History of Education	3	EDU120	General Teaching Methods	3
EDU111	Introduction to Educational Psychology	3	UCC110	Foundations of Life and Mission	3
UCC111	Bible Interpretation & Study Methods	3	UCC115	Comparative study of Religions	3
UCC112	Library Science and Information Competence	3	UCC116	Communication Skills	3
UCC114	Essentials of ICTs	3	___	Teaching subject 1	3
___	Teaching subject 1	3	___	Teaching Subject 2	3
___	Teaching Subject 2	3			
		21			18

Year 2, Semester 1			Year 2, Semester 2		
Code	Title	Hrs	Code	Title	Hrs
EDU210	Curriculum Development	3	EDU220	Educational Research Methods	3
EDU211	Education Media and Resources	3	EDU221	Human Growth and Development	3
UCC122	Introduction to Psychology	3	UCC221	Environment, Development and Stewardship	3
UCC222	Introduction to Sociology	3	UCC222	Introduction to Philosophy	3
___	Teaching Subject 1	3	___	Teaching Subject 1	3
___	Teaching Subject 2	3	___	Teaching Subject 2	3
		18			18

Year 3, Semester 1			Year 3, Semester 2		
Code	Title	Hrs	Code	Title	Hrs
EDU311	Special Needs in Education	3	EDU320	Educational Measurement and Evaluation	3
EDU312	Community Practicum Research Project	3	EDU321	Guidance and Counseling	3
___	Teaching Subject 1	3	EDU322	Educational Media Practical and Micro- teaching	3
___	Teaching Subject 2	3	___	Teaching Subject 1	3
___	Teaching Subject 1	3	___	Teaching Subject 2	3
___	Teaching Subject 2	3	___	Teaching Subject 1	3
			___	Teaching Subject 2	3
		18			21

Teaching Practice –semester on its own		
Code	Title	Hrs
EDU332	Teaching Practice (Using Computer Aided Technology)	3
EDU333	Community Practicum Research Project	3
		6

Year 4, Semester 1			Year 4, Semester 2		
Code	Title	Hrs	Code	Title	Hrs
EDU411	Education Administration and Management	3	EDU422	Education Planning and Economics	3
EDU413	Personality Development	3	___	Teaching Subject 1	3
___	Teaching Subject 1	3	___	Teaching Subject 2	3
___	Teaching Subject 2	3			
		12			9

Teaching subjects for BED-STE

The Subjects are arranged in the following order:

- i) English
- ii) Literature
- iii) Kiswahili
- iv) History
- v) Religious Studies
- vi) Business
- vii) Geography
- viii) Mathematics
- ix) Information Technology

Teaching Subjects Per Semester

Year 1, Semester 1			Year 1, Semester 2		
Code	Title	Hrs	Code	Title	Hrs
ENG111	Reading in English	3	ENG104	Phonetics	3
LIT111	Introduction to literature	3	LIT121	Poetry Appreciation and analysis	3
KIS111	History of Kiswahili Language	3	KIS121	Reading and Comprehension in Kiswahili	3
HIS111	History Africa	3	HIS121	History of East Africa	3
RED111	Biblical Backgrounds	3	RED211 OR	Historical Books OR	3
		3	RED210	Pentateuch	3
ACC111	Financial Accounting I	3	MGT111	Principles of management	3
GEO111	World Physical Geography	3	GEO121	Geography of East Africa	3
MAT111	Elements of probability and statistics	3	MAT121	Calculus	3
BIT112	Internet Technologies	3	BIT122	Programming Fundamentals	3

Year 2, Semester 1			Year 2, Semester 2		
Code	Title	Hrs	Code	Title	Hrs
ENG211	English Morphology and Syntax	3	ENG221	English Grammar	3
LIT212	Literary Criticism	3	LIT221	English Literature	3
KIS211	Kiswahili Grammar	3	KIS222	Kiswahili Poetry	3
HIS211	Themes of East African History	3	HIS222	History of South Africa	3
RED212 OR	Old Testament Prophets OR	3	RED222	Studies in the Gospels/ Life of Christ	3
RED311	Psalms and Wisdom Literature	3			
ECO111	Principles of Microeconomics	3	BA121	Introduction to Business Organizations	3
GEO211	Spatial organization and Human Geography	3	GEO212	Geomorphology	3
BIT114	Linear Algebra	3	MAT121	Linear programming	3
BIT123	System Analysis and Design	3	BIT121	Database Systems	3

Year 3, Semester 1			Year 3, Semester 2		
Code	Title	Hrs	Code	Title	Hrs
ENG121	Introduction to linguistics	3	ENG322	Language Acquisition and learning	3
ENG312	Creative Writing	3	EDU324	English Language Teaching Methods	3
LIT311	The Novel	3	LIT321	Shake sphere	3
LIT312	Comparative Dramas	3	EDU329	Literature Teaching Methods	3
KIS221	Kiswahili Writing	3	KIS322	Kiswahili Syntax and Morphology	3
KIS321	The Kiswahili Novel and play	3	EDU328	Kiswahili Language Teaching Methods	3
HIS311	History of West Africa	3	HIS321	History of Pan Africa and African Nationalism	3
HIS312	History of the USA	3	EDU326	History Teaching Methods	3
RED212	Old Testament Prophets OR	3	RED222	Studies in the Gospels/ Life of Christ	3
RED311	Psalms and Wisdom Literature	3			
RED221	African Traditional Religious Beliefs	3	RED321	Religious Ethics	3
RED312	Acts or Epistles (Paul's letters to Galatians and Romans/ Pastoral Epistles)	3	EDU331	Religious Education Teaching Methods	3

BIT320	E- Commerce	3	ENT121	Foundations of Entrepreneurship	3
MKT221	Principles of Marketing	3	EDU323	Business Teaching Methods	3
GEO221	Population, urbanization, and regional Geography	3	GEO322	Research Methodology and Field Work	3
GEO321	Climatology	3	EDU325	Geography Teaching Methods	3
MAT212	Real Analysis	3	MAT321	Discrete Mathematics	3
MAT311	Differential Equations	3	EDU330	Mathematics Teaching Methods	3
BIT211	Data Structures and Algorithms	3	BIT124	Computer Organization and Architecture	3
BIT223	Object Oriented Programming I	3	EDU327	Information Technology Teaching Methods	3

Year 4, Semester 1			Year 4, Semester 2		
Code	Title	Hrs	Code	Title	Hrs
ENG412	English for Specific Purposes	3	ENG421	Descriptive Grammar	3
LIT411	African Literature	3	LIT412	Major Literary periods	3
KIS411	Semantics and Pragmatics in Kiswahili	3	KIS422	Stylistics in Kiswahili	3
HIS411	History of Russia from 1900	3	HIS412	History of Africa in Diaspora	3
RED411	History of the Church	3	RED412	Marriage and Family	3
FIN311	Financial management	3	FIN121	Introduction to Banking	3
GEO421	Biogeography	3	GEO422	World regional Geography	3
MAT411	Abstract Algebra	3	MAT412	Statistical Inferences	3
BIT413 OR BIT316	Human Computer Interaction OR Strategic Management Information Systems	3	BIT225	Information Systems Project I	3

Other Information Technology Units Recommended as extra courses:

BIT113 Computer Support and Maintenance
 BIT325 IT Project Management
 BIT213 Operating Systems
 BIT315 Computer Security and Cryptography

b). Bachelor of Education (Early Childhood Development) BED(ECD)

Year 1, Semester 1			Year 1, Semester 2		
Code	Title	Hrs.	Code	Title	Hrs.
UCC111	Bible Interpretation & Study Methods	3	EDE315	Teaching Method Subject 1 (English or Kiswahili)	6
UCC112	Library Research and Information Competence	3	EDE317	Teaching Method Subject 2(Mathematics)	3
EDE113	Introduction to ECD	3	EDU120	General Teaching Methods	3
EDE111	Maternal Childcare Health& Nutrition		UCC116	Communication Skills	3
UCC114	Essentials of ICT		UCC110	Foundations for Life and Mission	3
UCC122	Introduction to Psychology		UCC115	Comparative study of Religions	3
		18	EDE124	Social Interaction in Childhood Development	3
					21

Year 2, Semester 1			Year 2, Semester 2		
Code	Title	Hrs.	Code	Title	Hrs.
UCC222	Introduction to Sociology	3	EDU220	Educational Research Methods	3
EDU210	Curriculum Development	3	EDU221	Human Growth and Development	3
EDU211	Education Media and Resources	3	UCC211	Introduction to Philosophy/Philosophical Foundations in ECD	3
EDE210	Health Education and Practices	3	UCC221	Environment, Development and Stewardship	3
EDE318	Teaching Method subject 3(Physical Education)	3	EDE216	Challenges of Family in the modern Society	3
EDE211	Material Development in ECD	3	EDE215	Critical thinking and problem Solving	3
		18			18

Year 3, Semester 1			Year 3, Semester 2		
Code	Title	Hrs	Code	Title	Hrs.
EDU311	Special Needs in Education/Children with special needs	3	EDU320	Educational Measurement and Evaluation/Assessment and Evaluation in ECD	3
EDU312	Community Practicum Research Project	3	EDU321	Guidance and Counseling	3
EDE223	Kiswahili and Theories of vernacular in ECD	3	EDE311	Music Movement and Drama	3
EDE314	Play in ECD	3	EDE312	Trends in ECD	3
EDE319	Teaching Method Subject 4 (Social Studies)	3	EDE323	Children's Literature and Mass Media	3
EDE313	Teaching Method Subject 5 (Religious Education)	3	EDU322	Educational Media Practical and Micro- teaching	3
		18			18

Teaching Practice		
Code	Title	Hrs.
EDU332	Teaching Practice (Using Computer aided Technology)	3
		3

Year 4, Semester 1			Year 4, Semester 2		
Code	Title	Hrs	Code	Title	Hrs
EDU411	Education Administration and Management	3	EDE416	Creativity through Art and Craft	3
EDU413	Personality Development	3	EDE417	Research in Child development & Family Studies	3
EDE414	Children Rights and Welfare	3	EDU422	Education Planning and Economics/Educational Planning & Economics for ECD	3
EDE415	Assessment and Screening Procedures in Children	3			9
EDE415	Assessment and Screening Procedures in Children	3			
		12			

c). Bachelor of Arts in Counseling Psychology (BACP)

YEAR 1 Semester 1				YEAR 1 Semester 2			
Code	Title	Hrs		Code	Title	Hrs	
PSY110	Introduction to Psychology/ Human Behaviour	3		PSY121	Life Skills for Human Empowerment	3	
PSY111	Introduction to Social Psychology	3		PSY122	Theories of Counselling	3	
UCC111	Bible Interpretation and Study Methods	3		PSY123	Psychology of Personality	3	
UCC112	Library Research and Information Competency	3		UCC110	Foundations for Life & Mission	3	
UCC114	Essentials of Information and Communications Technology	3		UCC115	Comparative Study of Religions	3	
		15		UCC116	English Writing and Communication	3	
					Personal Therapy (15 hrs)	0	
						18	

YEAR 2 Semester 1			YEAR 2 Semester 2		
Code	Title	Hrs	Code	Title	Hrs
PSY211	Developmental Psychology	3	PSY221	Group Counselling	3
PSY212	Theological Foundation of Counselling	3	PSY222	HIV/AIDS Counselling & Intervention	3
PSY213	Chemical Dependency	3	PSY223	Critical Thinking	3
PSY214	Depression and Management	3	UCC211	Introduction to Philosophy	3
UCC222	Introduction to Sociology	3	UCC221	Environment, Development and Stewardship	3
	Elective	3		Elective	3
		18			18

YEAR 3 Semester 1				YEAR 3 Semester 2			
Code	Title	Hrs	Cumm	Code	Title	Hrs	Cumm
PSY311	Marriage & Family Dynamics	3	72	GES321	Research Designs & Methods	3	90
PSY312	Human Sexuality	3	75	PSY322	Counselling Skills	3	93
PSY313	Loss, Bereavement & Trauma	3	78	PSY323	Stress, Burnout & Burnout Counselling	3	96
PSY314	Ethical & Legal Considerations in Counselling	3	81	PSY324	Abnormal Psychology	3	99
PSY315	Health Psychology	3	84	PSY325	Social Statistics	3	102
PSY316	Multicultural Diversity in Counselling	3	87	PSY326	Geriatric Psychology	3	105
		18	87			18	105

YEAR 4 Semester 1				YEAR 4 Semester 2			
Code	Title	Hrs		Code	Title	Hrs	
PSY411	Child & Adolescent Abuse & Counselling	3		GS423	Project	3	
PSY412	Psychology of Learning	3		PSY421	Premarital Education & Counselling	3	
PSY413	Effective Parenting	3		PSY423	Testing & Assessment (Child and Adolescent)	3	
PSY414	Conflict & Conflict Resolution & Management	3		PSY425	Industrial Counselling Attachment (Internship)	3	
PSY415	Testing & Assessment (Adults)	3				12	
PSY416	Terminal Illness and Counselling	3					
		18					

TOTAL HOURS: 132 required

ELECTIVES

Code	Course	Hrs	
PSY321	Disaster & Disaster Management	3	
PSY422	Witchcraft Accusations and Counselling	3	
PSY424	Emerging Issues in Counselling	3	

d). Bachelor of Arts in Communication, Linguistics and Translation (Descriptive Linguistics)

Year 1 Semester 1			Year 1 Semester 2		
Code	Title	Hrs	Code	Title	Hrs
UCC110	Foundations for Life and Mission	3	LTC123	Sociolinguistics	3
UCC112	Library Research and Information Competency	3	LTC125	Introduction to Phonology	3
LTC110	Introduction to Language and Linguistics	3	LTL124	Language contact and multilingualism	3
LTC111	Introduction to Morphology and Syntax	3	UCC116	Communication Skills (LLT)	3
LTC114	Phonetics	3	UCC111	Bible Interpretation & Study Methods	3
LTL113	African Language structures	3	LTL126	Lexicography	
Total		18	Total		18
Year 2 Semester 1			Year 2 Semester 2		
Code	Course Title	Hrs	Code	Course Title	Hrs
UCC114	Essentials of ICT (SBE IT)	3	LTC222	Pragmatics	3
LTC210	Morphology and Syntax 2	3	UCC211	Introduction to philosophy	3
LTC213	Discourse Analysis	3	LTL220	Introduction to Linguistic fieldwork	3
LTC211	Semantics	3	LTL221	Electronic Technology in Linguistics 1	3
LTL210	Phonology 2	3	UCC221	Environment, Development and Stewardship	3
UCC115	Comparative study of Religions	3	LTL223	Historical Linguistics	3
Total		18	Total		18

Year 3 Semester 1			Year 3 Semester 2		
Code	Course Title	Hrs	Code	Course Title	Hrs
LTL223	Leadership for Linguists	3	LTC320	INTERNSHIP	3
UCC222	Introduction to Sociology (SEAS ED)	3	LTL321	Linguistics Project 1	3
LTL311	Empirical Methods in Linguistic Research	3			
LTC315	Introduction to statistics	3			
LTL313	Electronic Technology in Linguistics 2	3			
UCC122	Introduction to Psychology (SEAS PY)	3			
Total		18	Total		6

Year 4 Semester 1			Year 4 Semester 2		
Code	Course Title	Hrs	Code	Course Title	Hrs
LTL411	Linguistic Analysis: Phonology	3	LTL423	Linguistic analysis: Syntax	3
LTL412	Linguistic Analysis: Morphology	3	LTL422	Linguistics Project 2	3
LT	ELECTIVE	3	LTC427	Culture and Language	3
LT	ELECTIVE	3	LTL424	Linguistic Analysis: Discourse	3
LTL415	Ethics in Linguistic Professions	3	LT	ELECTIVE	3
LT	ELECTIVE	3	LT	ELECTIVE	3
Total		18	Total		18

Bachelor of Arts in Communication, Linguistics and Translation (Translation Concentration)

Year 1 Semester 1			Year 1 Semester 2		
Code	Title	Hrs	Code	Title	Hrs
UCC110	Foundations for Life and Mission	3	LTC123	sociolinguistics	3
UCC112	Library Research and Information Competency	3	LTC125	Introduction to Phonology	3
LTC110	Introduction to Language and Linguistics	3	LTS120	Introduction to Translation	3
LTC111	Introduction to Morphology and Syntax	3	UCC116	Communication Skills (LLT)	3
LTC114	Phonetics	3	UCC111	Bible Interpretation & Study Methods	3
LTS	Language	3	LTS	Language	3
Total		18	Total		18

Year 2 Semester 1			Year 2 Semester 2		
Code	Course Title	Hrs	Code	Course Title	Hrs
UCC114	Essentials of ICT (SBE IT)	3	LTC222	Pragmatics	3
LTC210	Morphology and Syntax 2	3	UCC211	Introduction to philosophy	3
LTC213	Discourse	3	LTS221	Translation Theories	3
LTC211	Semantics	3	LTS232	Electronic technology for Translators 1	3
LTS220	History of Translation/History of Bible Translation	3	UCC221	Environment, Development and Stewardship	3
LTS	Language	3	LTS	Language	3
Total		18	Total		18

Year 3 Semester 1			Year 3 Semester 2		
Code	Course Title	Hrs	Code	Course Title	Hrs
UCC115	Comparative study of Religions	3	LTC320	INTERNSHIP	3
UCC222	Introduction to Sociology (SEAS ED)	3	LTS321	Translation Project 1	3
LTS313	Translation Theory and Practice 1	3			
LTC315	Introduction to statistics	3			
LTS316	Electronic Technology for Translation 2	3			
UCC122	Introduction to Psychology (SEAS PY)	3			
Total		18	Total		6

Year 4 Semester 1			Year 4 Semester 2		
Code	Course Title	Hrs	Code	Course Title	Hrs
LT	ELECTIVE	3	LTS424	Translation as a profession	3
LTS414	Translation Theory and Practice 2	3	LTL422	Translation Project 2	3
LTS412	Translation Ethics	3	LTC427	Culture and Language	3
LTS413	Translation in Specialized fields	3	LTS425	Translation of narratives	3
LT	ELECTIVE	3	LT	ELECTIVE	3
LT	ELECTIVE	3	LT	ELECTIVE	
Total		18	Total		18

Bachelor of Arts in Communication, Linguistics and Translation (Communications Concentration)

Year 1 Semester 1			Year 1 Semester 2		
Code	Title	Hrs	Code	Title	Hrs
UCC110	Foundations for Life and Mission (NEGST PA)	3	LTC123	Sociolinguistics	3
UCC112	Library Research and Information Competency	3	LTC125	Introduction to Phonology	3
LTC110	Introduction to Language and Linguistics	3	LTCO120	Basic human communication	3
LTC111	Introduction to Morphology and Syntax	3	UCC116	Communication Skills (LLT)	3
LTC114	Phonetics	3	UCC111	Bible Interpretation & Study Methods (NEGST BS)	3
LTCO110	English for communication	3	LTCO121	Kiswahili for communication	
Total		18	Total		18

Year 2 Semester 1			Year 2 Semester 2		
Code	Course Title	Hrs	Code	Course Title	Hrs
UCC114	Essentials of ICT (SBE IT)	3	LTC222	Pragmatics	3
LTC210	Morphology and Syntax 2	3	UCC211	Introduction to philosophy	3
LTC213	Discourse	3	LTCO223	Intercultural Communication	3
LTC211	Semantics	3	LTCO224	Public Speaking	3
LTCO211	Theory of communication	3	UCC221	Environment, Development and Stewardship	3
UCC115	Comparative study of Religions	3	LTCO225	Process and structure of communication	3
Total		18	Total		18

Year 3 Semester 1			Year 3 Semester 2		
Code	Course Title	Hrs	Code	Course Title	Hrs
LTCO310	Audience Studies	3	LTC320	INTERNSHIP	3
UCC222	Introduction to Sociology (SEAS ED)	3	LTCO321	Communication Project 1	3
LTCO311	Communication and Conflict	3			
LTC315	Introduction to statistics	3			
LTCO313	Introduction in Technology and Society	3			
UCC122	Introduction to Psychology (SEAS PY)	3			
Total		18	Total		6

Year 4 Semester 1			Year 4 Semester 2		
Code	Course Title	Hrs	Code	Course Title	Hrs
LT	ELECTIVE	3	LTCO424	Communication Law	3
LTCO412	Introduction to Public Relations	3	LTCO425	Advanced Technology and society	3
LTCO413	Trends in communication	3	LTC427	Culture and Language	3
LT	ELECTIVE	3	LTCO426	Communication project 2	3
LTCO414	Advanced Writing and Editing	3	LT	ELECTIVE	3
LT	ELECTIVE	3		ELECTIVE	3
Total		18	Total		18

e). Bachelor of Arts in Development Studies

YEAR 1 (36 hours)

Code	Semester One	Hrs	Code	Semester Two	Hrs
UCC111	Bible Interpretation and Study Methods	3	UCC116	Communication Skills	3
UCC112	Library Research and Information Competency	3	UCC110	Foundations for Life & Mission	3
BDS111	Introduction to Sustainable Development	3	BDS121	Theology of Development	3
UCC114	Essentials of Information and Communications Technology	3	UCC115	Comparative Study of Religions	3
BDS112	Systems Theory and Other Theories of Development	3	BDS122	Principles and Practices of Community Development	3
BDS113	Social Work and Community Development	3	BDS123	Participatory Community Development	3
		18			18

YEAR 2 (33 hours)

Code	Year Two Semester One	Hrs	Code	Year Two Semester two	Hrs
BDS210	Introduction to Urban Development	3	UCC221	Environment, Development and Stewardship	3
BDS211	Social Statistics	3	UCC211	Introduction to Philosophy	3
BDS212	Strategic Thinking in Development	3	BDS220	Community Health and Development	3
	Elective	3	BDS221	Disaster Preparedness and Management	3
UCC222	Introduction to Sociology	3	GES321	Research Design and Methods	3
	Elective	3			
		18			15

YEAR 3 (36 hours)

Code	Semester One	Hrs	Code	Semester Two	Hrs
BDS310	Social Integration of the Physically Challenged	3	BDS324	Local Resource Mobilization and Management	3
BDS311	Development Communication	3	BDS322	Human Communities and Conflicts	3
BDS312	Management of Community Based Organization	3	BDS323	Participatory Monitoring and Evaluation of Community Projects	3
	Elective	3	BDS320	Socio Economic Analysis for Wealth Creation	3
BDS313	Gender and Affirmative Action in Development	3		Elective	3
BDS314	Project	3	BDS321	Project Planning and Management	3
		18			18

YEAR 4 (24 hours)

Code	Semester one	Hrs	Code	Semester Two	Hrs
BDS411	Governance and Politics of Development	3	BDS422	Lobbying and Advocacy for Rights and Entitlements	3
BDS412	Rural Development and Sociology	3	BDS424	Social Entrepreneurship	3
BDS413	Training and Facilitation Skills for Capacity Building	3	BDS420	Internship	3
			BDS423	Rural Development and Agribusiness	3
			BDS421	Legal and Ethical Issues in Development	3
		9			15

SEAS UNDERGRADUATE DIPLOMA COURSES

a) Diploma in Counseling Psychology (DCP)

FIRST YEAR FIRST SEMESTER

FIRST YEAR SECOND SEMESTER

Code	Course Codes	Hrs	Code	Course Codes	Hrs
DUC126	Communication Skills	3	DUC124	Foundations for Life and Missions	3
DUC112	Library Research and Information Competency	3	DCP121	Ethical And Legal Considerations in Counselling	3
DUC113	Computer Systems and Information Technology	3	DCP120	Theories of Counselling	3
DCP111	Developmental Psychology	3	DCP122	Counselling Skills	3
DCP110	Introduction to Human Behaviour	3	DCP123	Psychology of Personality	3
DUC125	Bible Interpretations and Study Methods	3		Personal Therapy (10 hrs)	0
	Total	18		Total	15

SECOND YEAR FIRST SEMESTER

SECOND YEAR SECOND SEMESTER

Code	Course Codes	Hrs	Code	Course Codes	Hrs
DCP210	Marriage and Family Dynamics	3	DCP220	Effective Parenting	3
DCP211	Human Sexuality	3	DCP221	Chemical Dependency	3
DCP212	Loss, Grief and Trauma	3	DCP222	Internship	3
DCP213	HIV/ AIDS Counselling & Intervention	3		Elective	3
GES321	Research Methods	3		Elective	3
GES222	Long Essay	3		Total	15
	Total	18			

Summary of Courses Offered

ELECTIVES:

Year one, semester 1	Hrs	Code	Course Codes	Hrs
Year one semester 1	18	DCP223	Disaster & Disaster Management	3
Year one semester 2	15		Pre-marital Education and Counselling	3
Year two, semester 1	18	DCP224	Geriatric Psychology	3
Year two, semester 2	15	DCP225	Witchcraft Accusations & Counsl	3
Total	66	DCP226	Terminal Illness and Counselling	3

b). Diploma in Linguistics (DIL)

Year 1 Semester 1			Year 1 Semester 2		
Code	Title	Hrs	Code	Title	Hrs
DUC110	Foundations for Life and Ministry	3	DUC113	Introduction to Computer	3
DUC112	Library Science and Information Competence	3	DLTL124	Ethnographic Methods	3
DUC	Life Skills	2	DUC126	Communication Skills	3
DLTC110	Introduction to Language and Linguistics	3	DLTC125	Introduction to Phonology	3
DLTC114	Introduction to Phonetics	3	DLTC122	Semantics	3
DLTC111	Introduction to Morphology and Syntax	3	DLTC123	Sociolinguistics	3
DUC125	Bible Interpretation and Study Methods	3			
		21			18

Year 2 Semester 1			Year 2 Semester 2		
Code	Course Title	Hrs	Code	Course Title	Hrs
DLTC210	Morphology and Syntax 2	3	DLTL220	Linguistic Project	3
DLTL211	Historical Linguistics	3	DLTL221	Lexicography	3
DLTC213	Discourse Analysis	3	DLTC222	Introduction to statistics for Linguists	3
	ELECTIVE	3		ELECTIVE	3
DLTC214	Research Design and Methods for Linguists	3	DLTL 223	Leadership for Linguists	3
DTLC212	Pragmatics	3	DLTL222	African Language Structure	3
		18			18

c). Diploma in Development Studies (DDS)

Year 1, Semester 1			Year 1, Semester 2		
Code	Title	Hrs.	Code	Title	Hrs.
DCD111	Participatory Monitoring and Evaluation	3	DCD121	Introduction to Sustainable Development	3
DCD112	Training and Facilitation Skills for Capacity Building	3	DCD122	Systems Theory and Other Theories of Development	3
DUC112	Library Research and Information Competency	3	DCD123	Community Development Strategies and Approaches	3
DUC113	Computer Systems and Information Technology	3	DCD124	Principles and Practice of Community Development	3
DUC125	Bible Interpretation and Study Methods	3	DCD125	Strategic Thinking in Development	3
		15	DUC124	Foundations of Life and Mission	3
					18

Year 2, Semester 1			Year 2, Semester 2		
Code	Title	Hrs.	Code	Title	Hrs.
DCD211	Lobbying and Advocacy	3	DCD221	Human Communities and Conflict	3
DCD212	Participatory Community Development	3	DCD222	Social Statistics	3
DCD213	Disaster Preparedness and Management	3	DCD224	Community Development Strategies and Practice	3
DCD214	Disaster Preparedness and Management	3	DCD225	Project Planning and Management	3
DCD215	Project	3	DCD226	Management of Community Based Organizations	3
		15	DCD227	Internship	3
					18

d). Diploma in Wholistic Community Development

Year 1 Semester 1			Year 1 Semester 2		
Code	Course Title	Hrs	Code	Course Title	Hrs
DWD111	Participatory Monitoring and Evaluation	3	DWD121	Introduction to Sustainable Development	3
DWD112	Training and Facilitation Skills for Capacity Building	3	DWD125	Human Conflict and Peace Building	3
GES113	African World and Civilizations	3	DWD123	Community Development Strategies and Approaches	3
UCC221	Environment Development and Stewardship	3	DWD126	Social Integration of the Physically handicapped	3
GES115	Theology of Development	3	GES137	Bible Survey	3
Total 15 Credit Hours			Total 15 Credit Hours		

Year 2 Semester 1			Year 2 Semester 2		
Code	Course Title	Hrs	Code	Course Title	Hrs
DWD211	Mission to the Marginalized	3	DWD222	Social Statistics	3
GES321	Research Methods	3	DWD224	Disaster Preparedness and Management	3
DWD212	Participatory Community Development	3	DWD225	Project Planning and Management	3
DWD214	Gender and Affirmative Action in Development	3	DWD227	Internship	3
DWD226	Management of Community Based Organizations	3	DWD215	Project	3
DCP110	Introduction to Human Behaviour	3			
Total: 18 Credit Hrs			Total: 15 Credit Hrs		

e). Diploma in Education (DED) – Secondary Teacher Option

Year 1 Semester 1			Year 1 Semester 2		
Code	Title	Hrs	Code	Title	Hrs
DUC125	Bible Interpretation & Study Methods	3		Teaching subject 1	3
DUC112	Library Science and Information	3		Teaching Subject 2	3
	Teaching Subject 1	3	EDU012	General Teaching Methods	3
	Teaching Subject 2	3	DUC126	Communication Skills	3
EDU010	History of Education	3	DUC124	Foundations of Life and Mission	3
DUC113	Essentials of ICT	3			
		18			15
Year 2 Semester 1			Year 2 Semester 2		
Code	Title	Hrs	Code	Title	Hrs
EDU021	Curriculum Development	3	EDU023	Educational Media and Resources	3
UCC211	Introduction to Philosophy	3		Teaching subject 1	3
EDU022	Special Needs Education	3		Teaching subject 2	3
	Teaching Subject 2	3	EDU024	Educational Research Methods	3
	Teaching Subject 1	3	EDU025	Media Practical and Micro	3
UCC122	Introduction to Psychology	3	EDU030	Teaching Practice	3
		18			18

Year 3 Semester 1		
Code	Title	Hrs
EDU031	Community Research Project	3
EDU032	Education Measurement and Evaluation	3
EDU033	Education Administration and Management	3
	Teaching Subject 1	3
	Teaching Subject 2	3
		12

f). Diploma in Education (DED) – Early Childhood Development (ECD) Option

Year	Semester Two					
One	Code	Title	Hrs.	Code	Title	Hrs.
	UCC 111	Bible Interpretation and Study Methods	3	UCC 123	Communication Skills	3
	EDE 010	Foundations of Early Childhood education	3	EDE 012	General teaching Methods in ECD & Material Development	3
	UCC 113	Essentials of Information and Communications Technology	3	UCC 110	Foundations for Life and Mission	3
	UCC 112	Library Research and Library and Information Competency	3	EDE 013	Language Activities	3
	UCC 212	Introduction to Psychology	3	UCC 123	Comparative Study of Religions	
	EDE 011	Health Education, Practices and Nutrition in ECD		EDE 014	Administration and Management of Programmes for children.	3
			3	EDE 015	Human growth & Development 1&2	3
			18			18

Year	Semester Two					
Two	Code	Title	Hrs.	Code	Title	Hrs.
	EDE 016	Curriculum Development in ECD	3	EDE 022/ UCC 221	Creative & Environmental Activities Environment Development & Stewardship	3
	EDE 017	Mathematics & Science Activities	3	EDE 023	Human growth & Development 3	3
	EDE 018	Special Needs Education	3	EDE 024	Introduction to Research Methods	3
	EDE 019	Music and movement Activities	3	EDE 025	Physical Education & Psychomotor Activities	3
	EDE 020	Social Studies Activities	3	EDE 026	Guidance & Counselling	3
	EDE 021	Children Rights & Protection	3	EDE 027	Education Measurement and Evaluation	3
			18			18

Year			
	Code	Title	Hrs.
Three	EDE 028	Community Practicum and Research Project	3
	EDE 029	Teaching Practice	3
			6

Total required = 75 hours

g). Diploma in School Chaplaincy

YEAR ONE								
CODE	SEMESTER ONE	HRS	CODE	SEMESTER TWO	HRS	CODE	SEMESTER THREE	HRS
DBS 111	Bible Survey- OT	3	DUC116	Communication Skills	3	DBS122	Bible Survey-NT	3
DUC111	Bible Interpretation and Study Methods		DTH121	Preaching Skills	3	DTH112	Introduction to Ethics	3
DUC112	Library Research and Information Competency	3	DUC122	Foundations for Life & Mission	3	DTH210	Pastoral Counselling	3
DUC113	Essentials of Information and Communications Technology	3	DTH222	Marriage & Family	3	DTH211	Worship of God	3
DSC115	Skills and Competences of a Chaplain	3	DSC123	Interfaith Relations in Learning Institutions	3	DSC213	Psychology and Youth subculture	3
			EDU220	Research Methods	3	DSC 211	Project	3
	TOTAL	15			18			18

YEAR TWO					
CODE	SEMESTER ONE	HRS	CODE	SEMESTER TWO	HRS
DSC 214	Management and Leadership for Christian Mission	3	DSC223	Chaplaincy Practicum	3
DSC221	Drug and Substance Abuse Counselling	3			
DSC224	Discipleship Training	3			
DSC225	Emerging issues in Chaplaincy	3			
	TOTAL	12			3

34.4 INSTITUTE FOR THE STUDY OF AFRICAN REALITIES (ISAR)

DOCTORATE COURSES

Doctor of Philosophy in Interreligious Studies (PHDIRS)

YEAR 1, SEMESTER 1			YEAR 1, SEMESTER 2			YEAR 1, SEMESTER 3		
CODE	TITLE	HRS	CODE	TITLE	HRS	CODE	TITLE	HOURS
IMS908	Understanding Islamic Scriptures	3	IRS900	Research Methodology for Inter-religious Studies	3	IMS909	Islamic Theology and Thought	3
IMS902	History of Christian-Muslim Relations	3	IMS901	Islamic Issues in Africa	3	IMS903	Islamic Mysticism (Sufism)	3
	TOTAL	6		TOTAL	6		TOTAL	6

YEAR 2, SEMESTER 1			YEAR 2, SEMESTER 2 & 3			YEAR 2, SEMESTER 3		
CODE	TITLE	HOURS	CODE	TITLE	HOURS	CODE	TITLE	HOURS
	Qualifying Exams	3	IRS992	Dissertation II	3	IRS993	Dissertation III	3
	Proposal Defense	0						
IRS991	Dissertation I	3						
	TOTAL	6		TOTAL	3		TOTAL	3

YEAR 3, SEMESTER 1			YEAR 3, SEMESTER 2			YEAR 3, SEMESTER 3		
CODE	TITLE	HOURS	CODE	TITLE	HOURS	CODE	TITLE	HOURS
IRS994	Dissertation IV	3	IRS995	Dissertation V	3	IRS996	Dissertation VI	3
	TOTAL	3		TOTAL	3		TOTAL	3

YEAR 4, SEMESTER 1			YEAR 4, SEMESTER 2			YEAR 4, SEMESTER 3		
CODE	TITLE	HOURS	CODE	TITLE	HOURS	CODE	TITLE	HOURS
IRS997	Dissertation VII	3	IRS998	Dissertation VIII	3	IRS999	Dissertation IX	3
	TOTAL	3		TOTAL	3		TOTAL	3

APPENDICES

1.1 University Administration.

1.1.1 Board of Trustees

1. Rev. Dr. Esther Obasi-Ike -Chairperson
2. Mrs. Judith Kalinga
3. Dr. Mario Li Hing
4. Prof. Peter Kimuyu
5. Dr. Joyce Wangia
6. Dr. Nelson Makanda
7. Dr. Master Matlhaope

1.2 GOVERNING COUNCIL

1. Dr. Nelson Kuria -Chairperson
2. Mrs. Florence Simbiri-Jaoko
3. Dr. Nelson Makanda -Secretary
4. Rev. Dr. Master Matlhaope
5. Mr. Jim Rogers
6. Rev. Dr. Joseph Mayala Mitinje
7. Mr. Paul Ndemo
8. Mrs. Sharon Kisire
9. Mr. Erastus Kwaka Omolo
10. Mrs. Winnie Njenga
11. Dr. Faith Thuita

1.3 Chancellor

Rev. Dr. Master Matlhaope

1.4 Senate Members

- | | |
|----------------------------|--|
| 1. Dr. Nelson Makanda | -Vice Chancellor and Chair |
| 2. Prof. Joseph Kiplangat | -Deputy Vice Chancellor (Academics and Research) |
| 3. Prof. James Nkansah | -Dean NEGST |
| 4. Prof Samuel Ngewa | -Dean, Graduate School |
| 5. Dr. Esther Nyagah | -Registrar and Secretary of Senate |
| 6. Dr. Enock Opuka | -Dean SEAS |
| 7. Prof. Rosemary Mbogo | -Director – ISAR |
| 8. Prof. Beatrice Warue- | -Dean SBE |
| 9. Dr. Ephraim Mudave | -University Librarian |
| 10. Dr. Florence Mungathia | -Dean of Students |
| 11. Mr. Mesfin Teshome | -Director ICT |
| 12. Dr. Alice Mambo | -HOD - Education |
| 13. Mr. Jared Mayieka | -HOD – IT |
| 14. Kamula Israel Muoka | -SC President |
| 15. Wakoli M Ravine | -SC Secretary General |
| 16. Rev. Omondi Siwa | -University Chaplain |
| 17. Mr. Justus Musila | -Finance Manager |
| 18. Dr. Francisca Ngala | -Quality Assurance |
| 19. Prof. Caleb Kim | -Professor |
| 20. Dr. Josephine Mutuku | -HOD- Missions |
| 21. Dr. Nathan Joshua | -HOD Biblical Studies |
| 22. Dr. Stephanie Lowery | -HOD BTH, DTH |
| 23. Dr. Niceta Ileri | -HOD – Psychology & Counselling |
| 24. Prof. John Karanja | -Professor |
| 25. Dr. Lucy Kinyua | -HOD Business |
| 26. Dr. Abigael Mbua | -HOD – LL&T |
| 27. Dr. Matthews Mwalwa | -A.g. HOD Pastoral Studies |
| 28. Dr. Henry Mutua | -Coordinator, NEGST Masters Programmes |
| 29. Prof. Eric M. Aseka | -Professor |
| 30. Prof. Gyang Pam | -HOD Theological Studies |
| 31. Mr. Elly Ndiao | -HOD Development Studies |

1.5 Management Board

- | | |
|---------------------------|--|
| 1. Dr. Nelson Makanda | -Vice Chancellor |
| 2. Prof. Joseph Kiplangat | -Deputy Vice Chancellor (Academics and Research) |
| 3. Dr. Esther Nyagah | -Registrar (Academics and Research) |
| 4. Dr. Ephraim Mudave | -University Librarian |
| 5. Dr. Florence Mungathia | -Dean of Students |
| 6. Mr. Justus Musila | -Finance Manager |
| 7. Rev. James Omondi Siwa | -University Chaplain |
| 8. Mr. Solomon Weche | - Administration and Human Resources Manager |
| 9. Mrs. Silpa N. Akomo | -Senior Executive Assistant to the Vice Chancellor |

1.6 LIST OF ACADEMIC STAFF AND THEIR EDUCATIONAL BACKGROUND

Dr. Nelson Makanda, Vice Chancellor

Africa International University, 2011, PhD in Theological Studies (Biblical Studies)
Nairobi Evangelical Graduate School of Theology, (AIU), 2002 MA Biblical Studies
Egerton University, 1998, Kenya Bachelor of Education (Mathematics & Economics)

Prof. Joseph Kiplangat – Fulltime, Deputy Vice Chancellor Academic Affairs

University of Zululand (South Africa), 2004, PhD (Library and Information Sciences)
Moi University (Kenya), 1995, Master of Philosophy (Information Sciences)
Moi University (Kenya), 1991, Bachelor of Science Information Sciences

SCHOOL OF EDUCATION ARTS AND SOCIAL SCIENCES (SEAS)

Prof. Dankit Nassiuma (Adjunct), VICE CHANCELLOR

University of Manitoba, 1992, Canada Ph.D. (Statistics)
University of Manitoba, 1985, Canada M.Sc. (Statistics)
University of Nairobi, 1981, Kenya B.Sc. (Mathematics & Statistics)

Dr. Enoch Harun Wanekeya Opuka, DEAN SEAS

Education:

Kenyatta University, 2021 PhD in Gender and Development Studies
Moi University, 2003 Master of Philosophy (M.Phil.) – Development Studies
University of Nairobi, 1993 Bachelor of Education

Prof. Rosemary Wahu Mbogo

Biola University, Talbot, 2011, PhD (Educational Studies)
Nairobi Evangelical Graduate School of Theology (NEGST), 2002, Master of Philosophy
(Christian Education)
Nairobi Evangelical Graduate School of Theology (NEGST), 1998, Masters of Arts
(Christian Education)
Kenyatta University, 1994, Bachelor of Education (Science)

Prof. Victor Babajide Cole (Professor Emeritus)

Michigan State University, U.S.A, 1982. Ph.D. Leadership (1981).
Dallas Theological Seminary, U.S.A., 1979 Th. M. (A biblical Approach to
Contextualization of Theology)
Igbaja Theological Seminary, Nigeria 1973 B. Th.

Prof. John K. Jusu

Trinity International University, Deerfield, IL, 2008 PhD in Education
Nairobi Evangelical Graduate School of Theology, 2000 M.Phil.
Nairobi Evangelical Graduate School of Theology, 1996 M.A.
Njala University College, University of Sierra Leone 1986 B.Sc. Ed.

Dr. Alice Mambo

Biola University, Talbot School of Theology, USA, 2005 Ph.D. Educational Studies
Biola University, Talbot School of Theology, USA, 1998 M.A. Christian Ministry and
Leadership
University of Birmingham, West Hill College, England, 1991 Diploma in Religious
Education
Presbyterian Theological Seminary, Soul, South Korea, 1991 M.A. Christian Education
Pan Africa Christian College, Nairobi, 1988 B.A. Bible and Theology

Dr. Francisca Ngala

Africa International University, 2018 PhD (Education)
Africa International University (2014) MPhil (Christian Education)
Nairobi Evangelical Graduate School of Theology, (AIU), 2008 MDIV (Christian
Education)
Moi University, 1995 B.Ed

Dr. Mark A. Olander (Adjunct)

Trinity International University, Deerfield, IL 1992 PhD in Education
Trinity International University, Deerfield, IL 1978 MA in Religion
University of Wisconsin, River Falls, WI 1974 MSc (Teaching)
Kearney State College, Kearney, Nebraska, 1970 BA in Education

Dr. Joash Wambua Mutua

University of Alabama, 2008 Ph.D., Educational Psychology, Minor: Education
Administration, Public Health - Epidemiology
University of Alabama, 2005 Ed.S. Educational Psychology Minor: Education
Administration
University of Alabama, 2004 M.A., Educational Psychology
Alabama A&M University, 1998 M.Ed., Speech-Language Pathology
University of Alabama at Birmingham, 1993 MPH, Public Health Education
University of Alabama at Birmingham, 1991 BSc. Health Information Mgt.

Dr. Esther Nyagah

Africa International University, 2019, PhD (Education)

Africa International University, 2014, MPhil (Christian Education)

Nairobi Evangelical Graduate School of Theology, 2005, MA (Christian Education)

Egerton University, 2000, B/ED (Arts)

Dr. John Kitur

Kabarak University PhD (Education) - 2020

Africa International University (formerly NEGST) MDIV in Christian Education – 2007

Kenya Highlands University (formerly Kenya Highlands Evangelical University) B.Th.
– 1997

Africa International University (formerly NEGST) – courtesy of ETA Graduate Teacher
Diploma – 2007

Dr. Florence M. Mungathia

Africa International University PhD (Education), 2018

Nairobi Evangelical Graduate School of Theology (NEGST), Master of Divinity (Christian
Education), 2005

Kenyatta University B/ED (Home-Economics), 1998

Dr. Niceta Ireri

Daystar University Ph.D. in Clinical Psychology

Egerton University Masters in Guidance & Counselling Psychology

Daystar University B Ed. Education & Bible

Dr. Elizabeth N. Ngewa

Education:

Fuller Theological Seminary, USA, 2003 DMin

Nairobi Evangelical Graduate School of Theology, Kenya, 1993 M.Div.

Tyndale (Ontario Bible College), 1978 BRE

Mrs. Cecilia Wambui Mboya

Education:

Daystar University, PhD (Clinical Psychology)- Candidate

Master of Arts in Counselling Psychology, 2011 Daystar University

Psychological Debriefing & Trauma Counselling, 2008 East Africa Institute of Certified
Studies

Higher Diploma Human Psychological Counselling, 2002 Kenya Institute of
Professional Counselling

Pastoral Counselling, 2001 Kenya Institute of Professional Counselling

Higher Diploma Human Resources Management, 1999 Institute of Personnel Management
Bachelor of Commerce (Business Administration/ Marketing), 1992 University of Nairobi

Mrs. Elisabeth Aikulola Carew

Education:

Masters of Arts in Counselling Psychology, 2003 United States International
University Nairobi, Kenya

Post Graduate Diploma in Education (P.G.D.E.), 1980 Fourah Bay College (University of
Sierra Leone) Freetown, Sierra Leone

Bachelor of Science (Chemistry/Zoology), 1979 Fourah Bay College (University of Sierra
Leone) Freetown, Sierra Leone

Diploma in Christian Ministry, 1987 Nairobi Evangelical Graduate School of
Theology Nairobi, Kenya

Mrs. Elecah Muthoni Mbithi (Adjunct)

Education:

University of Durham, 2003 Masters (Counselling Studies)

Amani Counselling Centre & Training Institute, Kenya, 1995 Higher Dip.

College of Health Professions, Kenya, 1986 Dip (Dental Technology)

Mrs. Isabellah Musee (Adjunct)

Education:

United States of International University, 1998 MA (Counselling Psychology)

United States of International University, 1994 BA (Psychology),

Dr. Dana Brown (Adjunct)

Education:

State University of New York, USA, 2009 PhD. (Cognitive Psychology)

State University of New York, USA, 2005 MA (Cognitive Psychology)

Houghton College, USA, 2001 B.Sc.

Houghton College, USA, 2001 BA (French),

Prof. Robert Carlson

Education:

University of Oregon, Ph.D. in Linguistics

University of Oregon, USA, 1985 M.A. in Linguistics

University of Southern California, USA, 1974 B.A. in Biblical Studies

Dr. Abigael Mbuu

Education:

Africa International University, 2018 PhD (Translation Studies)
Africa International University, 2009 MA Translation studies
Kenyatta University Kenya, 2000 M.Ed.
Kenyatta University Kenya, 1989 B.Ed.

Dr. Peter Kamande Thuo (Adjunct)

Africa International University, Kenya, 2015 PhD (Translation Studies)
Africa International University, Kenya, 2009 MDiv in Translation Studies
Pan Africa Christian University, 2001 BA in Translation Studies

Prof. Helga Schroder (Adjunct)

Education:

University of Nairobi, 2004 PhD in Linguistics
University of Reading, UK, 1994 MA in Linguistics
University of Cologne, Germany, 1976 M.A. in Education and History

Dr. Andy Alo (Adjunct)

Education:

Africa International University, Kenya, 2011 PhD (Biblical Studies)
Nairobi Evangelical Graduate School of Theology, Kenya, 2000 MA (Translation Studies)
Institute Supérieur Pedagogique, Bukavu, 1987 Licence
Institute Supérieur Pedagogique, Bukavu, 1985 Graduat

Dr. Sammy Tioye (Adjunct)

Education:

Africa International University, 2013 PhD in Bible and Translation Studies
NEGST (AIU), 1999 MA in Bible Translation
Université de Ouagadougou, 1996 Maîtrise en Linguistique
Université de Ouagadougou, 1994 Licence Es Lettres en Linguistique
Université de Ouagadougou, 1993 Diplôme d'Etudes Générales (DEUG)

Prof. Stephen M. Nicolle (Part-time)

University of York, UK, 1992 B.A. Linguistics
University College of North Wales, 1993 Postgraduate Certificate in Education
University of York, UK, 1996 PhD Linguistics

Dr. Peter Yu (Part-time)

Africa International University 2010 PhD, Translation Studies
Nairobi Evangelical Graduate School of Theology (NEGST) 1994 M. A., Translation Studies
University of Yaoundé, Cameroon 1987 Maitrise, Linguistics
University of Yaoundé 1987 Higher Teacher's Diploma: Ecole Normale Superieure (ENS)
University of Yaoundé 1985 B. A., English Modern Letters:

Joel N. Mwangangi (DTF)

Africa International University 2020-to date
International Leadership University (ILU) 2015 Master of Divinity
Kenyatta University 1997 Bachelor of Arts (English & Sociology)

Fancy Lang'at (Part-time)

Africa International University 2020-to date PhD Translation Studies (Linguistics Concentration)
University of Nairobi 2014 M.A in Linguistics
Moi University 2006 B.Ed.

Gillphine Onkware (DTF)

Africa International University 2018-to date PhD Translation Studies
The Catholic university of Eastern Africa 2017 MA in Applied Linguistics
The Catholic university of Eastern Africa 2015 B.Ed.

Edward Kireti (DTF)

Africa International University 2019-to date PhD Translation Studies
University Of Nairobi 2016 (MA) in Translation: English, Swahili, French
Alliance Francaise – Nairobi 2014 Diplôme d'études en langue française (DELF B2)
Moi University 2014 B.Ed.

Mr. Elly Ochieng Ndiao

Education:

Jomo Kenyatta University of Agriculture and Technology (JKUAT) PhD Development Studies (On-going)
University of Nairobi MA Anthropology (2006) Specialized in Development Anthropology
University of Nairobi BA Anthropology (1999)

Dr. Phidel Baraza (Adjunct)

Africa International University, 2019, PhD (Education- Child Development and Family Studies)

Nairobi Evangelical Graduate School of Theology, 2006, MED,

Kenya Highlands Bible College, 2002, BED

Dr. Rachel Muteti (Adjunct)

Africa International University, 2020, PhD (Education - Child Development and Family Studies)

Africa International University, 2018, MED (Curriculum and Instruction)

Daystar University, 2011, MA Child Development

Nairobi Evangelical Graduate School of Theology (NEGST), 2007, H. Dip. Christian Ministries

Nairobi International School of Theology (NIST), 2005, Diploma in Christian Education

Mrs. Elose Mathenge-Kayeri (Adjunct)

Africa International University, PhD (Education) Ongoing

Kenyatta University, 2018, MED Curriculum Development

Moi University, 2007, BED (ARTS)

Dr. Jecinta Muigai (Adjunct)

Africa International University, 2020, PhD Education - Child Development and Family Studies

Africa International University, 2016, PGDE

Daystar University, 2013, MA Child Development

Nairobi Evangelical School of Theology (NEGST), 2008, Higher Diploma Christian Ministries

Nairobi Evangelical School of Theology (NEGST), 2006, Diploma Christian Ministries

Moore Theological College Australia: Department of External Studies, 2006, International Certificate in Biblical Studies

Meru Technical Training Institute, 1996, Certificate in General Agriculture

M/s Esther Ambetsa (Adjunct)

Kenyatta University, PhD Early Childhood Education (Ongoing)

Kenyatta University, 2015, MED Early Childhood Education

Kenyatta University, 2009, BED in Early Childhood Education

M/s Pasaka Gatura (Adjunct)

Kenyatta University, PhD Early Childhood Education (Ongoing)

Kenyatta University, 2018, MED Early Childhood Education

Kenyatta University, 2012, BED in Early Childhood Education

NAIROBI EVANGELICAL GRADUATE SCHOOL OF THEOLOGY (NEGST)

Prof. James Nkansah-Obrempong, DEAN NEGST

Education:

Fuller Theological Seminary, 2002 Ph. D. Systematic Theology
Nairobi Evangelical Graduate School of Theology, 1992 Th.M
Nairobi Evangelical Graduate School of Theology, 1990 M.Div
Pan Africa Christian College, 1988 B.A.

Prof. Gyang David Pam

Education:

The Nigerian Baptist Theological Seminary, Ogbomoso/Unijos, 2007 Ph.D. Systematic
Theology
Theological College of N. Nigerian, Bukuru, 1992 MA Systematic Theology
Jos ECWA Theological Sem. Jos, 1988 BA (Theology)

Mr. Martin Bussey

Education:

University of Brunel, UK, 1993 MA in Aspects of Biblical Interpretation
University of Cambridge, UK, 1984 MA (Theology)
University of Cambridge, UK, 1980 BA Hons (Theology)

Dr. Stephanie Lowery

Education:

Wheaton College (USA), 2016, Doctor of Philosophy in Systematic Theology
Biblical Theological Seminary, 2008, Master of Divinity
Grove City College, 2003, Bachelor of Arts

Dr. Bernard K. Boyo (Adjunct)

Education:

Fuller Theological Seminary, 2005 PhD Theology and Culture
Nairobi Evangelical Graduate School of Theology, 1996 Master of Theology
Nairobi International School of Theology, 1992 Master of Divinity
Ontario Bible College/Scott Theological College, 1989 Bachelor of Theology

Dr. Sicily Muriithi (Adjunct)

Education:

University of Kwa Zulu-Natal, South Africa, 2009 Ph.D. (Theology & Development)
University of Durban, 2001 MA (Religion and Social Transformation)
Univ. of Natal, South Africa, 1999 B.Th. (Theology & the Modern World and
Systematic Theo)
St. Paul's United Theological College, 1993 B.Div. (Systematic Theology)

Mr. George Anthony (Adjunct)

Education:

University of South Africa Candidate – MTh/DTh (Theological Ethics)

Nairobi International School of Theology, 1992 MDiv

Ghana College of Bible, Ghana, 1986 BTh

Maranatha Bible College, 1983 Dip. in Theology

University of Cape Coast, 1979 Dip. in Science

Mr. Justus Mutuku (Adjunct)

Education:

Nairobi Evangelical Graduate School of Theology, Kenya 2008 MDiv

Kenya Methodist University, Kenya, 2005 BTh

Moffat Bible College, Kenya, 1999 Dip. (Bible & Theology)

Dr. Dinah Nyamai (Adjunct)

Education:

University of Nairobi, 2021, PhD.

Africa International University, 2011, MPhil.

Nairobi Evangelical Graduate School of Theology, 2008 MA (Christian Education)

Ontario Bible College, 1996, BTh

Mr. Bernard Amianda (Adjunct)

Education:

Africa International University, Ongoing PhD

Nairobi Evangelical Graduate School of Theology, Kenya, 2009 MTH (Missions)

Nairobi Evangelical Graduate School of Theology, Kenya, 2007 M.Div. (Missions)

Pan Africa Christian University, Kenya, 1986 BA (Bible & Theology)

Dr. Lawrence Oseje (Adjunct)

Education:

Africa International University 2017 PHD (Interreligious Studies)

Nairobi Evangelical Graduate School of Theology, Kenya, 2009 MTH (Mission)

Nairobi Evangelical Graduate School of Theology, Kenya, 2006 MA (Missions)

ICI University, 2002 BA (Bible & Theology)

Mr. Peter Mathenge (Adjunct)

Education:

Africa International University, Ongoing PhD

Nairobi Evangelical Graduate School of Theology, Kenya, 2005 MA (Christian Education)

Egerton University, Kenya, 1997 BA (Social-Economics)

Mrs. Catherine Nduati (Adjunct)

Education:

Nairobi Evangelical Graduate School of Theology, Kenya, 2008 MA (Biblical Studies)
Nairobi Evangelical Graduate School of Theology, Kenya, 2006 Post Graduate
Diploma
Kenyatta University, Kenya, 1990 B.Ed.

Rev. Dr. Nathan Nzyoka Joshua

Education:

Africa International University AIU) 2013, PhD Theological Studies (Biblical Studies- NT)
Nairobi Evangelical Graduate School of Theology (NEGST), 1999, Master of Divinity
Scott Christian University (formerly Scott Theological College), 1990 Bachelor of Theology
Scott Christian University (formerly Scott Theological College), 1984 Diploma in Theology

Dr. Mark K. Mercer (Adjunct)

Education:

Dallas Theological Seminary 1987 Th.D. in Semitics and Old Testament Studies
Dallas Theological Seminary, 1979 Th.M.
Texas Tech University, 1975 B.A. in History

Prof. Samuel M. Ngewa

Education:

Westminster Theological Seminary, 1987 Ph.D Biblical Interpretation
Westminster Theological Seminary, 1983 M.Th. New Testament
Trinity Evangelical Divinity School, 1982 M.Div
Ontario Bible College, 1975 B.Th. Pastoral Studies
University of London, 1973 C.R.K. Bible
Scott Theological College, 1973 Dip.Th Theology

Dr. Humphrey M. Waweru (Adjunct)

Education:

University of KwaZulu-Natal, South Africa PhD in Theology
University of Natal, South Africa, 2001 Master of Theology
St. Paul's United Theological College, Limuru, Kenya, 1994 Bachelor of Divinity

Prof. Chester E. Wood (Emeritus)

Education:

St. Mary's College, Univ. of St. Andrews, Scotland, 1976 Ph.D. in New Testament
Trinity Evangelical Divinity School, Deerfield, IL, 1968 Master of Theology (Honors)
Trinity Evangelical Divinity School, Deerfield, IL, 1966 Bachelor of Divinity
(Honors)
Columbia Bible College, South Carolina, 1963 Bachelor of Arts (Honors)

Dr. Yohannes T. Sahile

Education:

PhD (Old Testament), Dallas Theological Seminary, Dallas, TX, 2015

M.Div. (Biblical Studies) NEGST, Kenya, 2007

B.A. (Bible and Theology), Addis Ababa Bible College, Ethiopia, 2004

Dr. Jamie Viands

Education:

Wheaton College, USA PhD (Biblical Theology, Old Testament emphasis), 2010

Gordon-Conwell Theological Seminary, USA MA (Old Testament), 2005

Wheaton College, USA MA (Biblical Exegesis), 2003

Wheaton College, USA BA (Ancient Languages/ Biblical and Theological Studies), 2001

Dr. Stephen D. Morad (Adjunct)

Education:

University of Edinburgh, Edinburgh, UK, 1998 PhD in Christianity in Non-Western World

Trinity International University, Deerfield, IL, 1980 MDiv in Church History

The King's College, New York, NY, 1971 BA in History

Prof. Mark Shaw (Adjunct)

Education:

Westminster Theological Seminary, 1981 Th.D., (Puritan Spirituality, Reformation Studies)

Gordon Conwell Theological Seminary, 1976 M.T.S., (Church History),

Gordon College, 1973 Bachelor of Arts (Biblical Studies)

Moody Bible Institute, 1970 Diploma in Pastoral Studies

Prof. Caleb Chul-Soo Kim

Education:

Fuller Theological Seminary, USA, 2001 Ph.D. in Intercultural Studies

Fuller Theological Seminary, USA, 1995 Th.M. in Intercultural Studies

Chong-Shin Theological Seminary, S. Korea, 1988 M.Div. in OT Biblical Studies

Kon-Kuk University, S. Korea, 1984 B.A. in Linguistics

Dr. Henry N. Mutua

Education:

Trinity International University, 1995 Ph.D. Intercultural Studies

Fuller Theological Seminary, 1991 M.A. Intercultural Studies

Scott Theological Seminary, 1980 Diploma in Theology

Dr. Josephine K. Mutuku

Education:

Fuller Theological Seminary, 2007 Ph.D. in Intercultural Studies
Fuller Theological Seminary, 2000 M.Th. in Intercultural Studies
Nairobi Evangelical Graduate School of Theology, 1997 M.Div. in Theology
Scott Theological College, 1991 B.Th. in Theology

Dr. Klaus Derungs

Education:

Middlesex University, 2017 Doctor of Philosophy (Social Anthropology)
Seminar Fur Sprachmethodik, Holzhausen, Germany and at the University of Oregon,
Eugene, USA (1996)
European Nazarene Bible College, Busingen (Germany) BA in Religion and Mission
(1994)

Dr. Shawn B. Redford (Adjunct)

Education:

Fuller Theological Seminary, 2007 Ph.D. Intercultural Studies
Fuller Theological Seminary, 1997 M.Div. Equivalency Courses
Fuller Theological Seminary, 1996 M.A. Intercultural Studies
Purdue University, 1987 B.S. Mechanical Engineering

Dr. Stephen Kim (Adjunct)

Education:

University of Pretoria, 2009 Ph.D. in Biblical and Religious Studies
Gordon-Conwell Theological Seminary, 2004 Th.M. in Old Testament
NEGST/AIU, 2002 Pre-M.Th. in the OT Studies
NIST/ILU, 2001 M.A. in Bible Exposition and Theology
Midwest University, 1994 B.Th. in Theology and Bible

Dr. Benjamin Lee Hegeman (Adjunct)

Education:

Rijks University, Utrecht, the Netherlands, 2000 Ph.D. in Missiology
Rijks University, Utrecht, the Netherlands, 1994 Doctorandus in Missiology
Laval University, Quebec, Canada, 1989-1990 French Language Studies
Central Baptist Seminary, Toronto, ON, Canada, 1987 M. Div in Theology
Wilfred Laurier University, Waterloo, On, Canada, 1985 B.A. Religion and Culture
Central Baptist Seminary, Toronto, Canada, 1985 B.R.S. in Theology

Dr. Silas Waweru (Adjunct)

Education:

Asbury Theological Seminary, 2010 PhD (ICS)
Nairobi Evangelical Graduate School of Theology, 2004 M.Div., (Missions)
Kenyatta University, Kenya, 1990 B.Ed.

Dr. John Dilworth

Education:

Fuller Theological Seminary Pasadena, California, 1999 Doctor of Ministry
Fuller Theological Seminary Pasadena, California, 1980 Master of Divinity
Whitworth University, Spokane, Washington, 1975 BA in Christianity and Society

Dr. George Renner (Adjunct)

Education:

Wheaton College, 1971 B.A.
Gordon-Conwell Seminary, 1974 M.Div.
Boston University, 1982 Ph.D.

Prof. Faustin Ntamushobora (Adjunct)

Education:

Talbot School of Theology Biola University, La Mirada, CA, 2012 PhD, Educational Studies
Africa International University, Nairobi, Kenya, 2006 MA Course Work
Daystar University, Nairobi, Kenya, 1998 MA in Christian Ministries
Bunia Theological College, D.R. Congo, 1989 Bachelor of Theology

Dr. Judy Wanjiru Wang'ombe

Education:

Africa International University, 2019 Ph.D Inter-religious Studies
Africa International University, 2007 M.Th. Mission Studies (Islamic Emphasis)
NEGST/AIU, 2001 M.Div. Biblical Studies
Egerton University, 1991 B.Sc. Agricultural Economics

Prof. John Karanja

Education:

University of Cambridge, UK, 1993 PhD in Modern History
University of Leeds, UK, 1986 MA in Applied Theology
St Paul's University, Limuru, Kenya, 1980 BD Honors

Dr. Matthews Mwalwa

Education:

Asbury Theological Seminary, Kentucky 2012	Doctor of Ministry
Nairobi Evangelical Graduate School of Theology 2002	Master of Theology
Nairobi International School of Theology 1988	Master of Divinity
Grace University, Omaha, Nebraska 1980	B.Sc. Sacred Music
Scott Christian University, Machakos, Kenya 1976	Dip. Theology

Anna Mosby - Adjunct

Education

Africa International University,	PhD Theological Studies – Ongoing
Africa International University, 2012	M.A. Biblical Studies
Wheaton College, 1988	M.A. Missions/Intercultural Studies
Moody Bible Institute, 1987	B.A. Communications/Writing

SCHOOL OF BUSINESS & ECONOMICS (SBE)

Prof. Joseph Kiplangat, Deputy Vice Chancellor Academic Affairs

University of Zululand (South Africa), 2004, PhD (Library & Information Sciences)

Moi University (Kenya), 1995, Master of Philosophy (Information Sciences)

Moi University (Kenya), 1991, Bachelor of Science Information Sciences

Prof. Beatrice Njeru Warue

Professor and Dean of the School of Business and Economics

Education:

Kenya Methodist University, 2012 Doctor of Philosophy in Business Administration
and Management (Banking & Finance Option)

Moi University, 2011 Masters of Banking and Finance (MBF)

Kenya Methodist University, 2007 Master of Business Administration (MBA)
(Accounting and Finance)

Kenya Methodist University, 2004 Bachelor of Business Administration, BBA
(Accounting & Finance)

Prof. Eric Aseka

Education:

Kenyatta University: Ph.D. in History (1992)

University of Nairobi: M.A in History (1986)

University of Nairobi: B.Ed. (1980)

Dr. Godfrey Tshibangu Mwamba

Education:

Faculty of Management Studies University of Delhi-India, 2005 Ph.D. Management
Studies

Madurai Kamaraj University Tamil Nadu - India, 1999 M.A Human
Resource Management

University of Delhi- India, 1999 B. A. (Political Science)

Grace Bible College Delhi Extension, 2002 Ministerial Diploma (Biblical Studies)

Institute of Technical Social Studies. Ngiri-Ngiri. Kinshasa – Congo, 1988 Technical
Social Studies (State Diploma)

Dr. Jane Gathigia Murithi

Education:

Jomo Kenyatta University of Agriculture and Technology, 2016 PhD (Finance))

Kenya Methodist University, 2011 MSc. Finance & Investment

Jomo Kenyatta University of Agriculture and Technology, 1999 BSc. Statistics
(Computer Science)

Dr. Lucy Mwendwa Kinyua

Education:

Jomo Kenyatta University of Agriculture and Technology, 2014 PhD in Entrepreneurship
Kenyatta University, 2005 Masters in Science (Entrepreneurship Development)
Kenya Technical Teachers College 1997-1998 Higher National Diploma in Entrepreneurship Development
Kagumo Teachers College 1988 Diploma in Education

Mr. Humphrey Muga

Education:

McGill University, Canada, 1990 MA (Economics)
University of Nairobi, 1979 BA (Economics)

Mr. Peter M. Muthui

Education:

Kenyatta University PhD (Ongoing) CPA
University of Pune, India, 1996 MBA Marketing
University of Pune, India, 1994 B. Com, Accounting and Marketing

Mr. Jared Maranga Mayieka

Education:

Kabarak University, Candidate Doctor of Philosophy in IT Security and Audit (ongoing)
Strathmore University, 2012 Master of Science in Information Technology (Msc. IT)
Strathmore University, 2009 Bachelor of Business Information Technology

Mr. Lawrence Xavier Waweru Thuku

Education:

University of Nairobi, 2013 to date, PhD Candidate, Information Systems
Strathmore University, 2008 Master of Science in Information Technology (MSc. IT)
Strathmore University: 2005 Graduate Diploma in Management Information System
Moi University, 2003 Bachelor of Arts Degree

Elizabeth Ndunge Benson Mwaura (Adjunct)

Education:

Jomo Kenyatta University (JKUAT), Ph.D in Information Technology (Ongoing)
University of Sunderland (UK), 2011 Masters Information Technology Management
Kabarak University, 2008 Bachelor of Computer Science

James Iraya Njogu (Adjunct)

Education:

University of Nairobi, 2014 Masters of Science – Computer Science

Egerton University, 1996 Bachelor of Science - Computer Science

Nancy Khadioli (Adjunct)

Education:

University of Nairobi (UoN) ICIPE,

Ph.D in Statistics (Ongoing)

University of Nairobi (UoN), 2008

Master of Science in Social Statistics

Moi University, 1996

Bachelor of Education in Mathematics and

Geography

Dr. Jane Kibanga

Education:

Jomo Kenyatta University (JUKUAT), 2019

PhD Business Administration (Finance)

Kenya Methodist University, 2009

Masters of Business Administration

(Finance)

KASNEB, 2008

Certified Public Accountants of Kenya (CPAK)

Kenya Methodist University, 2007

Bachelor of Business Administration

(Accounting & Finance)

Dr. Edward Kobuthi

Education:

University of Nairobi, 2018

PhD, Strategy and Corporate Governance

United States International University, 2001

MBA Strategic Management

United States International University, 1999

Bsc International Business, Marketing and

Finance

Institute of Brewing London, 1991

Diploma Master Brewer

VLB- Technische Universität, Berlin, Germany, 1984

Braumeister

Technical University of Kenya, 1982

HND-Food Process Engineering

Dr. Caleb O. Onjure

Education:

Jomo Kenyatta University (JKUAT), 2019
Management)

PhD Business Administration (Strategic

Jomo Kenyatta University (JKUAT), 2016

Masters of Science in Project Management

Jomo Kenyatta University (JKUAT), 2014
(Strategic Management)

Masters of Business Administration

Kenya Methodist University, 2010

Bachelor of Theology

Kenya Institute of Studies in Criminal Justice (KICJ), 2013 Higher Diploma in Intelligence and Forensic Management
Kenya Institute of Studies in Criminal Justice (KICJ), 2011 Diploma Intelligent Management
Kenya Armed Forces Technical Training College, 2007 Diploma Aeronautical Engineering (Avionics Option)

Dr. Patrick Kasyula (Adjunct)

Education:

PhD, Leadership & Governance. 2018- JKUAT
MA (Political Science & Public Administration, 2009- University of Nairobi
BA (Political Sc & Public Administration, 2003- University of Nairobi

Dr. Gedion Onyango (Adjunct)

Education:

PhD. Public Administration, 2017 -University of the Western Cape, South Africa
MPhil. Public Administration, 2012- University of Bergen, Norway
BA. Social Science (Political Science, First Class) ,2009. -Makerere University, Uganda

Mr. Ezra Namunyu Simiyu

Education:

Master of Science in Information Technology, Strathmore University (Ongoing)
BSC in Information Technology, 2021, Africa International University

Ms. Monicah Wambui Hinga

Education:

Master of Science in Information Technology, Kabarak University (Ongoing)
BSC in Information Technology, 2021, Africa International University

Mr. Rodgers Agil Jato Ochieng

Education:

Master of Science in Information Systems Security, Strathmore University (Ongoing)
BSC in Information Technology, 2021, Africa International University

INSTITUTE FOR STUDIES OF AFRICAN REALITIES (ISAR)

Prof. Rosemary Wahu Mbogo, DIRECTOR ISAR

Biola University, Talbot, 2011, PhD (Educational Studies)

Nairobi Evangelical Graduate School of Theology (NEGST), 2002, Master of Philosophy
(Christian Education)

Nairobi Evangelical Graduate School of Theology (NEGST), 1998, Masters of Arts
(Christian Education)

Kenyatta University, 1994, Bachelor of Education (Science)

Prof. Caleb Chul-Soo Kim,

Education:

Fuller Theological Seminary, 2001 Ph.D.

Fuller Theological Seminary, 1995 Th.M.

Chong-Shin Theological Seminary, 1988 M.Div.

Kon-Kuk University, 1984 B.A.

Dr. Priscilla Adoyo (Adjunct)

Education:

Fuller Theological Seminary, USA, 2008 Doctor of Missiology

Eastern Mennonite University, U.S.A., 2003 MA (Conflict Transformation)

Nairobi Evangelical Graduate School of Theology, 1988 M.Div.

Kenyatta University College, 1979 B.Ed. (Home Economics)

Dr. Josephine K. Mutuku

Education:

Fuller Theological Seminary, 2007 Ph.D. in Intercultural Studies

Fuller Theological Seminary, 2000 M.Th. in Intercultural Studies

Nairobi Evangelical Graduate School of Theology, 1997 M.Div. in Theology

Scott Theological College, 1991 B.Th. in Theology

Dr. Benjamin Lee Hegeman (Adjunct)

Education:

Rijks University, Utrecht, the Netherlands, 2000 Ph.D. in Missiology

Rijks University, Utrecht, the Netherlands, 1994 Doctorandus in Missiology

Laval University, Quebec, Canada, 1989-1990 French Language Studies

Central Baptist Seminary, Toronto, ON, Canada, 1987 M. Div in Theology

Wilfred Laurier University, Waterloo, On, Canada, 1985 B.A. Religion and Culture

Central Baptist Seminary, Toronto, Canada, 1985 B.R.S. in Theology

Dr. Stephen Kim (Adjunct)

Education:

University of Pretoria, 2009 Ph.D. in Biblical and Religious Studies
Gordon-Conwell Theological Seminary, 2004 Th.M. in Old Testament
NEGST/AIU, 2002 Pre-M.Th. in the OT Studies
NIST/ILU, 2001 M.A. in Bible Exposition and Theology
Midwest University, 1994 B.Th. in Theology and Bible

Dr. Judith Wanjiru Wang'ombe

Education:

Africa International University, 2019	PhD Inter-religious Studies
Africa International University, 2007	M.Th. Mission Studies (Islamic Emphasis)
NEGST/AIU, 2001	M.Div. Biblical Studies
Egerton University, 1991	B.Sc. Agricultural Economics

1.7 ACADEMIC ADMINISTRATIVE STAFF

- Dr. Esther Nyagah – Registrar (Academics and Research)
- Dr. Ephraim Mudave- University Librarian
- Solomon Riitho- Assistant Registrar (Examinations and Timetabling)
- Grace Gathu- Senior Administrative Officer, DVCAA’s Office
- Jane Yego – Records Officer
- Irene Mwendu- Admissions Officer
- Joyce Kedemi – Senior Administrative Officer – NEGST
- Emily Bango- Senior Administrative Officer – ISAR
- Alice Waruingi- Administrative Officer, Graduate School
- Moses Mwongela- Administrative Officer- SEAS
- Risper Chemutai- Administrative Assistant –SBE
- Faith Nyakerario- Administrative Assistant, Admissions Office

Programmes Offered:

SCHOOL OF EDUCATION, ARTS AND SOCIAL SCIENCES (S.E.A.S)

Doctor of Philosophy in Clinical Psychology.

Doctor of Philosophy in Translation Studies.

PhD in Education

- Curriculum and Instruction
- Church Education
- Child Development and Family Studies
- Educational Leadership and Administration.

Master of Education with specializations in;

- Curriculum and Instruction
- Church Education
- Child Development and Family Studies
- Educational Leadership and Administration.

Master of Arts in Translation Studies.

Master of Arts in Christian Education.

Master of Arts in Counselling Psychology.

Postgraduate Diploma in Education.

Bachelor of Arts in Development Studies.

- International Development
- Community Development
- Rural/Urban Development
- Language Development

Bachelor of Arts in Counselling Psychology.

Bachelor of Arts in Communication,

Translation and Linguistics.

Bachelor of Education.

- Early Childhood
- Primary Teacher
- Secondary Teacher

Diploma in Education.

Diploma in Community Development.

Diploma in Counselling Psychology.

Diploma in Holistic Community Development.

Diploma in General Linguistics.

LANGUAGE CENTER OFFERING

English

French

Sign Language

German

Spanish

Arabic

Chinese

ODEL "BLENDED E-LEARNING

- Diploma in Theology
- Bachelor of Business Administration
- Bachelor of Arts in Counselling Psychology
- Bachelor of Arts in Development Studies
- Bachelor in Theology

INSTITUTE FOR THE STUDY OF AFRICAN REALITIES (ISAR)

Ph.D. in Inter religious Studies

ISAR core centres

Center for:

- Research and Publication (C.R.P)
- The Study of Religions (C.S.R)
- Church empowerment and community engagement (C.C.E.C.E)
- Peace building and conflict transformation (C.P.B.C.T)
- Values, ethics, law, leadership, governance and public policy (C.V.E.L.L.G.P.P)



Programmes Offered:

NAIROBI EVANGELICAL GRADUATE SCHOOL OF THEOLOGY (NEGST)

PhD in Theological Studies with tracks in;

- Theological Studies
- Missions Studies.
- Biblical Studies.
- World Christianity.
- Practical Theology.

Doctor in Ministry

Master of Divinity with specializations in;

- Biblical studies.
- Pastoral studies
- General studies
- Mission Studies
- Theology
- Church Education

Master of Arts in Theology

Master of Arts in Pastoral Studies.

Master of Arts in Church History.

Master of Arts in Biblical Studies.

Master of Arts in Mission Studies.

Postgraduate Diploma in

Theology.

Bachelor of Theology.

Diploma in Theology.

Diploma in Holistic Ministry.

Certificate in Theology.

PhD in Leadership and Governance.

- Religious sector Leadership and Governance
- Statesmanship Political Leadership and Governance
- Corporate Governance and **Leadership**
- Psychology of Leadership
- Public Governance
- Civic Leadership and Governance

PhD in Business Administration with specializations in

- Finance
- Corporate Leadership
- Strategic Management
- Strategic Human Capital Management

Master of Arts in Public Policy and Administration.

Master of Arts in Organizational **Leadership.**

Master of Business Administration.

- Marketing
- Accounting and Finance
- Strategic Management
- Human Resource Management
- Entrepreneurship

Bachelors in Business Administration

- Banking and Finance
- Procurement Management
- Entrepreneurship
- Human Resource Management
- Marketing

SCHOOL OF BUSINESS AND ECONOMICS (SBE)

Bachelor of Science in Information Technology.

Bachelor of Science in Entrepreneurship.

Bachelor of Science in Accounting and Financial Management.

Diploma in Business Management.

Diploma in Information Technology.

Diploma in Human Resource Management.

Diploma in Procurement Management.

Diploma in Sales and Marketing.

Diploma in Investment Management.

Diploma in Entrepreneurship.

Diploma in Disaster Management.

Diploma in Health Systems Management.

KASNEB Professional Courses

Certified Public Accountant (CPA)

The entry requirements for professional courses are KCSE C+, KASNEB Diploma programs or any other diploma from a recognized institution

KASNEB Certificate Courses
As per KASNEB Entry Requirements

